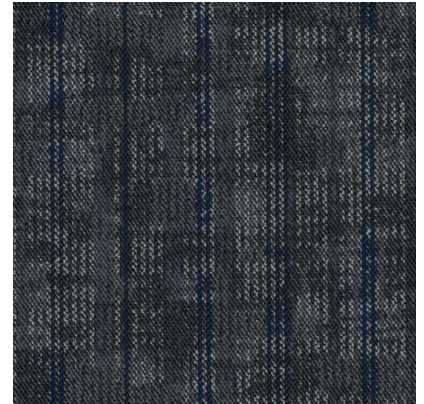


## Intrinsic Accent | 7311 on Advance Modular

Manufacturer/Brand	J+J
MasterFormat Number	09 68 13 Tile Carpeting

### Product Attributes

Pre-consumer Recycled Content	<b>56.9%</b>
Post-consumer Recycled Content	<b>0%</b>
Total Recycled Content	<b>56.9%</b>
End of Life	<b>Flooring Reclamation Program</b>
PFAS Free	<b>Yes</b>
PVC Free	<b>Yes</b>



### Certifications & Documentation

NSF 140 Sustainability Standard	<b>Gold</b>
Environmental Product Declaration	<b>Advance Modular Backing EPD</b>
Health Product Declaration	<b>Advance Modular HPD</b>
Declare Label (Red List Free)	<b>Advance Modular - Declare Label</b>
LEED	<b>Advance Modular Backing LEED Credit Analysis</b>
Annual Sustainability Report	<b>Sustainability Report 2023</b>

Our J & J Drive manufacturing facility is ISO 14001 :2015 certified.