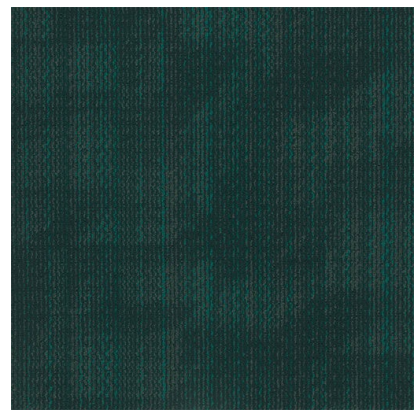


Meridian | 7579 on Advance Modular

| | |
|---------------------|-------------------------|
| Manufacturer/Brand | J+J |
| MasterFormat Number | 09 68 13 Tile Carpeting |

Product Attributes

| | |
|--------------------------------|-------------------------------------|
| Pre-consumer Recycled Content | 56.5% |
| Post-consumer Recycled Content | 0% |
| Total Recycled Content | 56.5% |
| End of Life | Flooring Reclamation Program |
| PFAS Free | Yes |
| PVC Free | Yes |



Certifications & Documentation

| | |
|-----------------------------------|---|
| NSF 140 Sustainability Standard | Gold |
| Environmental Product Declaration | Advance Modular Backing EPD |
| Health Product Declaration | Advance Modular HPD |
| Declare Label (Red List Free) | Advance Modular - Declare Label |
| LEED | Advance Modular Backing LEED Credit Analysis |
| Annual Sustainability Report | Sustainability Report 2023 |

Our J & J Drive manufacturing facility is ISO 14001 :2015 certified.