

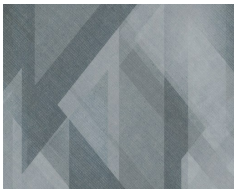


Installation Methods: Parquet, Herringbone, Basketweave, Brick, Monolithic, Ashlar

Colorways



1111 Textile



1112 Fabric

Product Specifications

Wear Layer	20 mil
Thickness	5mm
Finish / Coating	Enhanced UV Urethane w/ Ceramic Bead
Pattern Repeat	Random
Edge Treatment	N/A
Dimensions:	18" x 36" approx. (45.72cm x 91.44cm)
Standard Adhesive	Commercialon® LVT Adhesive
Backing Class	Commercial Grade
Commercial Traffic	Heavy Commercial
Standard Warranties	15 Year LVT Commercialon Adhesive for Modular Carpet & LVT

Packaging

Sq.ft. per piece / carton	4.5 / 27
Weight per piece / carton	8.3 (lbs) / 49.77 (lbs)
Pieces per box	6
Boxes per pallet	40

Special Technologies

Added Antimicrobial	ZPT (Zinc Protective Technology)
----------------------------	----------------------------------

Environmental Specifications & Tests

Indoor Air Quality	FloorScore® Certified
LEED v4	Contributes to IAQ: Low Emitting Materials
End of Life	100% Recyclable
Class / ASTM F1700	Class III Printed Film Vinyl Plank - Type B (embossed)
Radiant Panel	Class 1
ADA Compliance	Compliant For Accessible Routes
ASTM F2055 (Size and Tolerance)	Passes
ASTM F386 (Thickness)	Passes
ASTM F1914 (Residual Indentation)	Passes
ASTM F137 (Flexibility)	Passes
ASTM F2199 (Dimensional Stability)	Passes
ASTM F925 (Chemical Resistance)	Passes
ASTM F1514 (Resistance to Heat)	Passes
ASTM F1515 (Resistance to Light)	Passes
ASTM E648 (Critical Radiant Flux)	Passes
ASTM E662 (Optical Smoke Density)	Passes
ASTM C1028 (Slip Resistance)	Passes
ASTM F970 (Static Load)	Passes