



Installation Methods: Parquet, Herringbone, Basketweave, Brick, Ashlar

Product Specifications

| | |
|----------------------------|---|
| Construction | Patterned Loop |
| Backing | Nexus® Modular |
| Dye Method | Solution Dyed |
| Fiber Type | Encore® SD Ultima® (with recycled content) |
| Face Weight | 21 oz./sy (712 grams/m2) |
| Pile Density | 8130 oz./y3 (301.47 kg/m3) |
| Pattern Repeat | N/A |
| Gauge | 1/12 (4.72 rows/cm) |
| Stitches Per Inch | 12.5 stitches/in (4.92 stitches/cm) |
| Standard Size | 18" x 36" approx. (45.72cm x 91.44cm) |
| Standard Adhesive | Commercialon Premium Modular Adhesive |
| Optional Adhesive | TileTabs, Nexus Cushion Modular Adhesive, Advance Modular Carpet Cushion Adhesive |
| Standard Warranties | Nexus Modular Commercialon Adhesive for Modular Carpet & LVT Encore® SD Ultima Fiber |
| Optional Warranties | Nexus Cushion Modular Nexus FC Cushion Advance Modular Backing Tile Tabs Nexus Cushion Adhesive Advance Modular Adhesive Encore® 100 Fiber |

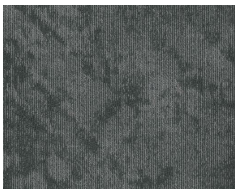
Special Technologies

| | |
|-------------------------------|----------|
| ProSept® Antimicrobial | Optional |
| ProTex® Soil Release | Standard |
| Sentir® Odor-Blocker | Optional |

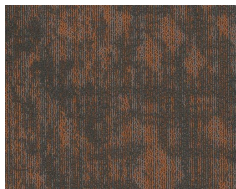
Environmental Specifications & Tests

| | |
|-------------------------------|------------------------------------|
| NSF 140: | Gold Certified |
| Indoor Air Quality | GLP9716 |
| Total Recycled Content | 45.1% |
| Radiant Panel | Class 1 |
| Smoke Density | Less than 450 flaming (ASTM E 662) |
| Static Test | Less than 3 kv (AATCC-134) |
| ADA Compliance | Compliant For Accessible Routes |
| Pill Test | Yes |
| Lightfastness | Yes |

Colorways



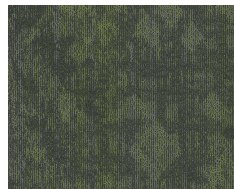
3266 Cool Oasis



3267 Citrus Oasis



3268 Crystal Oasis



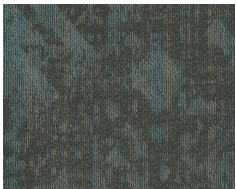
3269 Lime Oasis



3270 Warm Beam



3271 Gold Beam



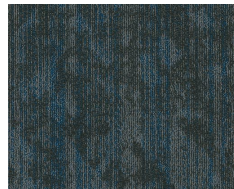
3272 Azure Beam



3273 Light Beam



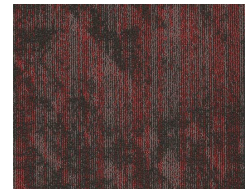
3274 Carbon Path



3275 Royal Path



3276 Plum Path



3277 Brick Path