



Installation Methods: Parquet, Herringbone, Basketweave, Brick, Monolithic, Ashlar

Product Specifications

Construction	Patterned Loop
Backing	Nexus® Modular
Dye Method	Solution Dyed
Fiber Type	Encore® SD Ultima® (with recycled content)
Face Weight	22 oz./sy (746 grams/m2)
Pile Density	8731 oz./y3 (323.75 kg/m3)
Pattern Repeat	N/A
Gauge	1/12 (4.72 rows/cm)
Stitches Per Inch	10 stitches/in (3.94 stitches/cm)
Standard Size	18" X 36" approx. (45.72cm x 91.44cm)
Standard Adhesive	Commercialon Premium Modular Adhesive
Optional Adhesive	TileTabs, Advance Modular Carpet Cushion Adhesive, Nexus Cushion Modular Adhesive
Standard Warranties	Nexus Modular Commercialon Adhesive for Modular Carpet & LVT Encore® SD Ultima Fiber
Optional Warranties	Nexus Cushion Modular Nexus FC Cushion Advance Modular Backing Tile Tabs Nexus Cushion Adhesive Advance Modular Adhesive Encore® 100 Fiber

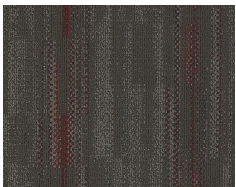
Special Technologies

ProSept® Antimicrobial	Optional
ProTex® Soil Release	Standard
Sentir® Odor-Blocker	Optional

Environmental Specifications & Tests

NSF 140:	Gold Certified
Indoor Air Quality	GLP9716
Total Recycled Content	44.8%
Radiant Panel	Class 1
Smoke Density	Less than 450 flaming (ASTM E 662)
Static Test	Less than 3 kv (AATCC-134)
ADA Compliance	Compliant For Accessible Routes
Pill Test	Yes
Lightfastness	Yes

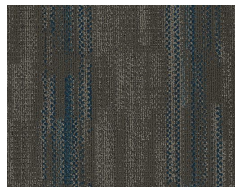
Colorways



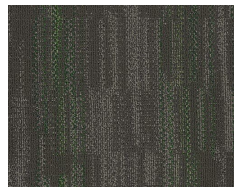
3591 Warm Red



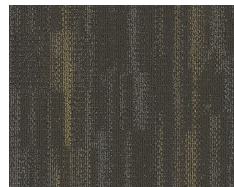
3592 Warm Pur...



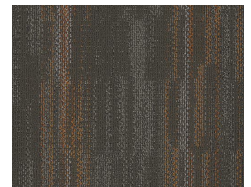
3593 Warm Blue



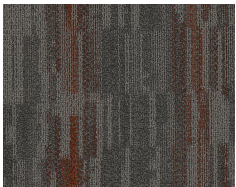
3594 Warm Gr...



3595 Warm Yel...



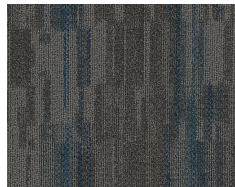
3596 Warm Or...



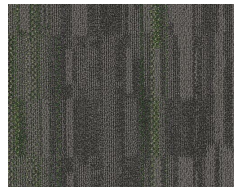
3597 Cool Red



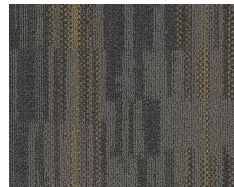
3598 Cool Purple



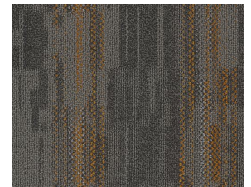
3599 Cool Blue



3600 Cool Green



3601 Cool Yellow



3602 Cool Oran..