



Installation Methods: Brick, Monolithic, Ashlar

Product Specifications

Construction	Patterned Cut and Loop
Backing	Nexus® Modular
Dye Method	Beck Dyed
Fiber Type	Type 6,6 Nylon
Face Weight	37 oz./sy (1255 grams/m2)
Pile Density	8061 oz./y3 (298.91 kg/m3)
Pattern Repeat	N/A
Gauge	1/10 (3.94 rows/cm)
Stitches Per Inch	10 stitches/in (3.94 stitches/cm)
Standard Size	24" x 24" approx. (60.96cm x 60.96cm)
Standard Adhesive	Commercialon Premium Modular Adhesive
Standard Warranties	Nexus Modular Commercial Adhesive for Modular Carpet & LVT Advance Modular Backing Encore® RE & Type 6,6 Nylon Fiber
Optional Warranties	Nexus Cushion Modular Tile Tabs Nexus Cushion Adhesive Commercialon High Moisture Adhesive for Modular Carpet and LVT Nexus FC Cushion

Special Technologies

ProSept® Antimicrobial	Optional
ProTex® Soil Release	Standard
Sentir® Odor-Blocker	Optional

Environmental Specifications & Tests

NSF 140:	Gold Certified
Indoor Air Quality	GLP9670
Total Recycled Content	33.2%
Radiant Panel	Class 1
Smoke Density	Less than 450 flaming (ASTM E 662)
Static Test	Less than 3 kv (AATCC-134)
ADA Compliance	Compliant For Accessible Routes
Pill Test	Yes
Lightfastness	Yes

Colorways



2255 Warm To...



2258 Diffuse



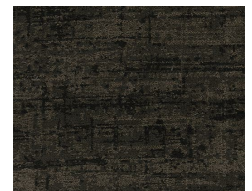
2261 Haze Grey



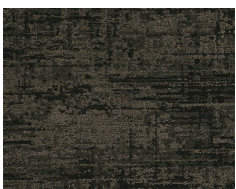
2262 Neutral De...



2265 Grayscale



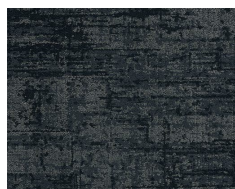
3106 Noise



3108 Shutter



3109 Sync



3110 Burst