



Installation Methods: Brick, Monolithic, Ashlar, Quarter Turn

Product Specifications

Construction	Multi-Level Tip Sheared Loop
Backing	Nexus® Modular
Dye Method	Solution/Yarn Dyed
Fiber Type	Encore® BCF (with recycled content)
Face Weight	35 oz./sy (1187 grams/m2)
Pile Density	6691 oz./y3 (248.11 kg/m3)
Pattern Repeat	N/A
Gauge	1/10 (3.94 rows/cm)
Stitches Per Inch	9 stitches/in (3.54 stitches/cm)
Standard Size	24" x 24" approx. (60.96cm x 60.96cm)
Standard Adhesive	Commercialon Premium Modular Adhesive
Optional Adhesive	TileTabs
Standard Warranties	Nexus Modular Commercialon Adhesive for Modular Carpet & LVT Encore® BCF (with ColorLoc Plus)
Optional Warranties	Nexus Cushion Modular Tile Tabs Nexus Cushion Adhesive Commercialon High Moisture Adhesive for Modular Carpet and LVT Nexus FC Cushion Encore® 100 Fiber

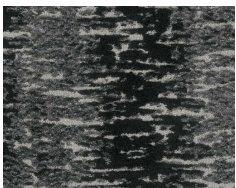
Special Technologies

Colorloc® Plus	Standard
ProSept® Antimicrobial	Optional
ProTex® Soil Release	Standard
Sentir® Odor-Blocker	Optional

Environmental Specifications & Tests

NSF 140:	Gold Certified
Indoor Air Quality	GLP9716
Total Recycled Content	42.64%
Radiant Panel	Class 1
Smoke Density	Less than 450 flaming (ASTM E 662)
Static Test	Less than 3 kv (AATCC-134)
ADA Compliance	Compliant For Accessible Routes
Pill Test	Yes
Lightfastness	Yes

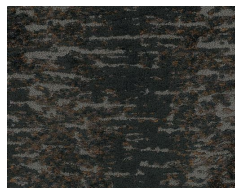
Colorways



2312 Glazed



2315 Bisque



2317 Oxide



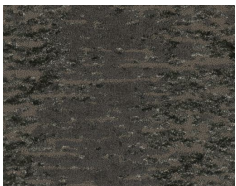
2322 Alkaline



2324 Blue Kashi



3613 Fired



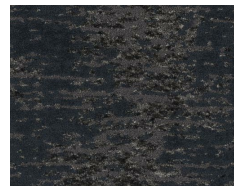
3614 Patina



3615 Gris



3616 Alpine



3617 Indigo