



### Product Specifications

|                            |   |
|----------------------------|---|
| <b>Construction</b>        | Textile Composite                         |
| <b>Backing</b>             | Kinetex Felt Cushion                      |
| <b>Dye Method</b>          | Solution Dyed                             |
| <b>Wear Layer</b>          | Polyester - Applied Pattern               |
| <b>Pattern Repeat</b>      | N/A                                       |
| <b>Total Weight</b>        | 4.5 oz - 5.2 oz/ square foot              |
| <b>Total Thickness</b>     | .205 inches                               |
| <b>Dimensions:</b>         | 24" x 24" modules                         |
| <b>Standard Adhesive</b>   | Kinetex Adhesive                          |
| <b>Packaging</b>           | 18 modules per box (72 sq.ft)             |
| <b>Standard Warranties</b> | <b>Kinetex Adhesive</b><br><b>Kinetex</b> |

### Special Technologies

|                        |          |
|------------------------|----------|
| <b>Kinetex ProTex®</b> | Standard |
|------------------------|----------|

### Environmental Specifications & Tests

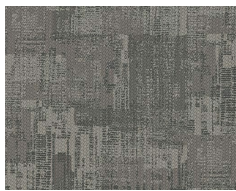
|                                |                                    |
|--------------------------------|------------------------------------|
| <b>Carbon Footprint:</b>       | Carbon Neutral                     |
| <b>Recyclability:</b>          | 100% Closed-loop Recyclable        |
| <b>NSF 140:</b>                | Platinum Certified                 |
| <b>Indoor Air Quality</b>      | GLP2690                            |
| <b>Total Recycled Content:</b> | 47%                                |
| <b>Radiant Panel</b>           | Class 1                            |
| <b>Smoke Density</b>           | Less then 450 flaming (ASTM E 662) |
| <b>Static Test</b>             | Less then 3 kv (AATCC-134)         |
| <b>ADA Compliance</b>          | Compliant For Accessible Routes    |
| <b>Pill Test</b>               | Yes                                |
| <b>Lightfastness</b>           | Yes                                |

**Installation Methods:** Brick, Ashlar, Quarter Turn

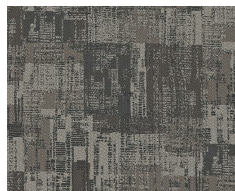
### Colorways



2842 Motivate



2843 Launch



2844 Molecule



2845 Phase



2846 Accelerator



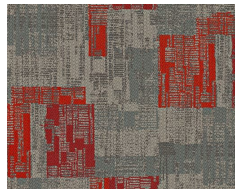
2847 Chemistry



2848 Energy



2849 Reaction



2850 Impulse