



Product Specifications

<b>Construction</b>	Textured Loop
<b>Backing</b>	PremierBac® Plus (A)
<b>Dye Method</b>	Beck Dyed
<b>Fiber Type</b>	Type 6,6 Nylon
<b>Face Weight</b>	28 oz./sy (949 grams/m2)
<b>Pile Density</b>	8490 oz./y3 (314.81 kg/m3)
<b>Pattern Repeat</b>	N/A
<b>Gauge</b>	1/10 (3.94 rows/cm)
<b>Stitches Per Inch</b>	12 stitches/in (4.72 stitches/cm)
<b>Standard Width</b>	12 ft 3.66 m
<b>Standard Adhesive</b>	Commercialon Premium Carpet Adhesive
<b>Standard Warranties</b>	<b>PremierBac Plus</b> <b>Encore® RE &amp; Type 6,6 Nylon Fiber</b>
<b>Optional Warranties</b>	<b>Endure Plus</b> <b>TitanBac Plus</b>

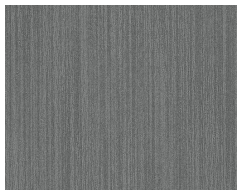
Special Technologies

<b>ProSept® Antimicrobial</b>	Optional
<b>ProTex® Soil Release</b>	Standard
<b>Sentir® Odor-Blocker</b>	Optional

Environmental Specifications & Tests

<b>NSF 140:</b>	Gold Certified
<b>Indoor Air Quality</b>	GLP3678
<b>Total Recycled Content</b>	55.1%
<b>Radiant Panel</b>	Class 1
<b>Smoke Density</b>	Less than 450 flaming (ASTM E 662)
<b>Static Test</b>	Less than 3 kv (AATCC-134)
<b>ADA Compliance</b>	Compliant For Accessible Routes
<b>Pill Test</b>	Yes
<b>Lightfastness</b>	Yes

Colorways



3061 Coincide



3062 Medley



3063 Synthesize



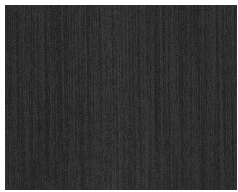
3064 Consolidate



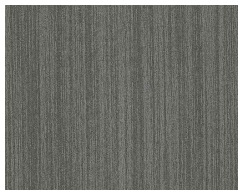
3067 Meld



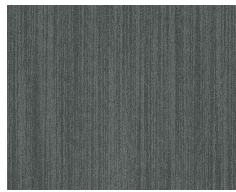
3068 Combine



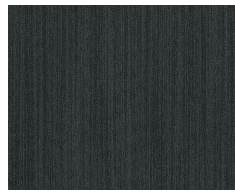
3069 Incorporate



3070 Compose



3071 Blend



3072 Unify