



**Installation Methods:** Parquet, Herringbone, Basketweave, Brick, Monolithic, Ashlar

Product Specifications

<b>Construction</b>	Patterned Loop
<b>Backing</b>	Nexus® Modular
<b>Dye Method</b>	Solution Dyed
<b>Fiber Type</b>	Encore® SD Ultima® (with recycled content)
<b>Face Weight</b>	22 oz./sy (746 grams/m2)
<b>Pile Density</b>	8100 oz./y3 (300.35 kg/m3)
<b>Pattern Repeat</b>	N/A
<b>Gauge</b>	1/12 (4.72 rows/cm)
<b>Stitches Per Inch</b>	10 stitches/in (3.94 stitches/cm)
<b>Standard Size</b>	18" x 36" approx. (45.72cm x 91.44cm)
<b>Standard Adhesive</b>	Commercialon Premium Modular Adhesive
<b>Optional Adhesive</b>	TileTabs
<b>Standard Warranties</b>	<b>Nexus Modular Commercial Adhesive for Modular Carpet &amp; LVT Advance Modular Backing Encore® SD Ultima Fiber</b>
<b>Optional Warranties</b>	<b>Nexus Cushion Modular Tile Tabs Nexus Cushion Adhesive Commercialon High Moisture Adhesive for Modular Carpet and LVT Nexus FC Cushion Encore® 100 Fiber</b>

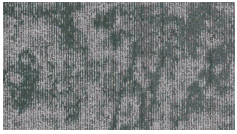
Special Technologies

<b>ProSept® Antimicrobial</b>	Optional
<b>ProTex® Soil Release</b>	Standard
<b>Sentir® Odor-Blocker</b>	Optional

Environmental Specifications & Tests

<b>NSF 140:</b>	Gold Certified
<b>Indoor Air Quality</b>	GLP9716
<b>Total Recycled Content</b>	46.65%
<b>Radiant Panel</b>	Class 1
<b>Smoke Density</b>	Less than 450 flaming (ASTM E 662)
<b>Static Test</b>	Less than 3 kv (AATCC-134)
<b>ADA Compliance</b>	Compliant For Accessible Routes
<b>Pill Test</b>	Yes
<b>Lightfastness</b>	Yes

Colorways



3480 Stratus C...



3481 Stratus Na...



3482 Cirro Color



3483 Cirro Nat...



3484 Alto Color



3485 Alto Natu...



3486 Nimbus C...



3487 Nimbus N...



3488 Strato Co...



3489 Strato Na...



3490 Cumulo C...



3491 Cumulo N...



3492 Cirrus Co...



3493 Cirrus Na...

[www.jjf flooringgroup.com](http://www.jjf flooringgroup.com)