



**Installation Methods:** Parquet, Herringbone, Basketweave, Ashlar

### Product Specifications

<b>Construction</b>	Textured Patterned Loop
<b>Backing</b>	Nexus® Modular
<b>Dye Method</b>	Solution/Yarn Dyed
<b>Fiber Type</b>	Encore® BCF (with recycled content)
<b>Face Weight</b>	24 oz./sy (814 grams/m2)
<b>Pile Density</b>	6845 oz./y3 (253.82 kg/m3)
<b>Pattern Repeat</b>	N/A
<b>Gauge</b>	1/12 (4.72 rows/cm)
<b>Stitches Per Inch</b>	12 stitches/in (4.72 stitches/cm)
<b>Standard Size</b>	18" x 36" approx. (45.72cm x 91.44cm)
<b>Standard Adhesive</b>	Commercial Premium Modular Adhesive
<b>Optional Adhesive</b>	TileTabs
<b>Standard Warranties</b>	<b>Nexus Modular Commercial Adhesive for Modular Carpet &amp; LVT Advance Modular Backing Encore® BCF (with ColorLoc Plus)</b>
<b>Optional Warranties</b>	<b>Nexus Cushion Modular Tile Tabs Nexus Cushion Adhesive Commercial High Moisture Adhesive for Modular Carpet and LVT Nexus FC Cushion Encore® 100 Fiber</b>

### Special Technologies

<b>Colorloc® Plus</b>	Standard
<b>ProSept® Antimicrobial</b>	Optional
<b>ProTex® Soil Release</b>	Standard
<b>Sentir® Odor-Blocker</b>	Optional

### Environmental Specifications & Tests

<b>NSF 140:</b>	Gold Certified
<b>Indoor Air Quality</b>	GLP9716
<b>Total Recycled Content</b>	43.8%
<b>Radiant Panel</b>	Class 1
<b>Smoke Density</b>	Less than 450 flaming (ASTM E 662)
<b>Static Test</b>	Less than 3 kv (AATCC-134)
<b>ADA Compliance</b>	Compliant For Accessible Routes
<b>Pill Test</b>	Yes
<b>Lightfastness</b>	Yes

### Colorways



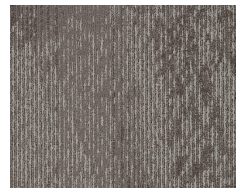
1983 Impression



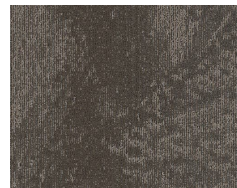
1984 Engrave



1985 Inscribe



1986 Dissolve



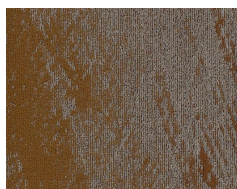
1987 Mordant



1988 Stipple



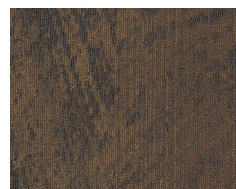
1989 Oxidize



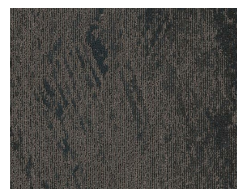
1990 Emulsion



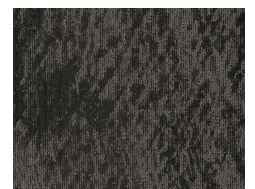
1991 Erode



1992 Chisel



1993 Ingrain



1994 Stamp