



**Installation Methods:** Parquet, Herringbone, Basketweave, Brick, Ashlar

Product Specifications

<b>Construction</b>	Patterned Loop
<b>Backing</b>	Nexus® Modular
<b>Dye Method</b>	Solution Dyed
<b>Fiber Type</b>	Encore® SD Ultima® (with recycled content)
<b>Face Weight</b>	23 oz./sy (780 grams/m2)
<b>Pile Density</b>	9196 oz./y3 (340.99 kg/m3)
<b>Pattern Repeat</b>	N/A
<b>Gauge</b>	1/10 (3.94 rows/cm)
<b>Stitches Per Inch</b>	10 stitches/in (3.94 stitches/cm)
<b>Standard Size</b>	18" x 36" approx. (45.72cm x 91.44cm)
<b>Standard Adhesive</b>	Commercialon Premium Modular Adhesive
<b>Optional Adhesive</b>	TileTabs, Advance Modular Carpet   Cushion Adhesive, Nexus Cushion Modular Adhesive
<b>Standard Warranties</b>	<b>Nexus Modular Commercialon Adhesive for Modular Carpet &amp; LVT Encore® SD Ultima Fiber</b>
<b>Optional Warranties</b>	<b>Nexus Cushion Modular Nexus FC Cushion Advance Modular Backing Tile Tabs Nexus Cushion Adhesive Advance Modular Adhesive Encore® 100 Fiber</b>

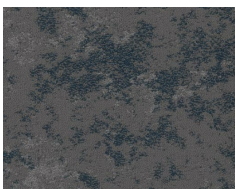
Special Technologies

<b>ProSept® Antimicrobial</b>	Optional
<b>ProTex® Soil Release</b>	Standard
<b>Sentir® Odor-Blocker</b>	Optional

Environmental Specifications & Tests

<b>NSF 140:</b>	Gold Certified
<b>Indoor Air Quality</b>	GLP9716
<b>Total Recycled Content</b>	44.6%
<b>Radiant Panel</b>	Class 1
<b>Smoke Density</b>	Less than 450 flaming (ASTM E 662)
<b>Static Test</b>	Less than 3 kv (AATCC-134)
<b>ADA Compliance</b>	Compliant For Accessible Routes
<b>Pill Test</b>	Yes
<b>Lightfastness</b>	Yes

Colorways



3524 Pisces



3525 Pegasus



3526 Virgo



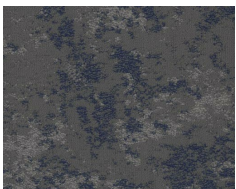
3527 Scorpio



3528 Leo



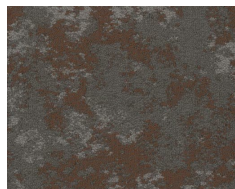
3529 Gemini



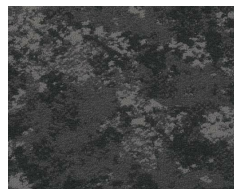
3530 Hydra



3531 Orion



3532 Aries



3533 Perseus