



**Installation Methods:** Brick, Monolithic, Ashlar, Quarter Turn

Product Specifications

<b>Construction</b>	Patterned Loop
<b>Backing</b>	Nexus® Modular
<b>Dye Method</b>	Solution Dyed
<b>Fiber Type</b>	Encore® SD Ultima® (with recycled content)
<b>Face Weight</b>	16 oz./sy (543 grams/m2)
<b>Pile Density</b>	5925 oz./y3 (219.70 kg/m3)
<b>Pattern Repeat</b>	N/A
<b>Gauge</b>	1/12 (4.72 rows/cm)
<b>Stitches Per Inch</b>	9.3 stitches/in (3.66 stitches/cm)
<b>Standard Size</b>	24" x 24" approx. (60.96cm x 60.96cm)
<b>Standard Adhesive</b>	Commercialon Premium Modular Adhesive
<b>Optional Adhesive</b>	TileTabs
<b>Standard Warranties</b>	<b>Nexus Modular Commercial Adhesive for Modular Carpet &amp; LVT Advance Modular Backing Encore® SD Ultima Fiber</b>
<b>Optional Warranties</b>	<b>Nexus Cushion Modular Tile Tabs Nexus Cushion Adhesive Commercialon High Moisture Adhesive for Modular Carpet and LVT Nexus FC Cushion Encore® 100 Fiber</b>

Special Technologies

<b>ProSept® Antimicrobial</b>	Optional
<b>ProTex® Soil Release</b>	Standard
<b>Sentir® Odor-Blocker</b>	Optional

Environmental Specifications & Tests

<b>NSF 140:</b>	Gold Certified
<b>Indoor Air Quality</b>	GLP9716
<b>Total Recycled Content</b>	46.3%
<b>Radiant Panel</b>	Class 1
<b>Smoke Density</b>	Less than 450 flaming (ASTM E 662)
<b>Static Test</b>	Less than 3 kv (AATCC-134)
<b>ADA Compliance</b>	Compliant For Accessible Routes
<b>Pill Test</b>	Yes
<b>Lightfastness</b>	Yes

Colorways



2052 Vista



2053 Zenith



2054 Highrise



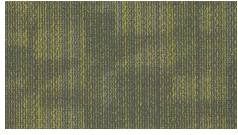
2055 Beacon



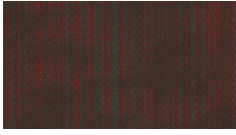
2056 Backdrop



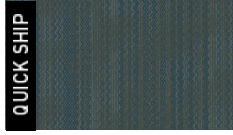
2057 Aerial



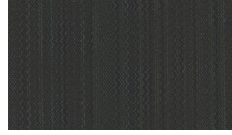
2058 Overlook



2062 Sight Line



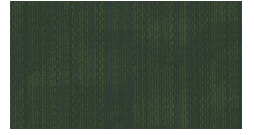
2064 View



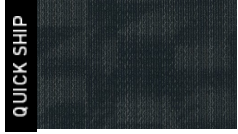
2065 Empire



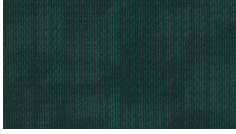
2066 Silhouette



2069 Terrace



2070 Vanishing ...



2071 Panorama

[www.jjf flooringgroup.com](http://www.jjf flooringgroup.com)