



Installation Methods: Brick, Monolithic, Ashlar, Quarter Turn

Product Specifications

Construction	Textured Patterned Loop
Backing	Advance Modular
Dye Method	Solution Dyed
Fiber Type	Encore® SD Ultima® (with recycled content)
Face Weight	32 oz./sy (1085 grams/m2)
Pile Density	15063 oz./y3 (558.55 kg/m3)
Pattern Repeat	N/A
Gauge	1/10 (3.94 rows/cm)
Stitches Per Inch	10 stitches/in (3.94 stitches/cm)
Standard Size	24" x 24" approx. (60.96cm x 60.96cm)
Standard Adhesive	Commercial Premium Modular Adhesive
Optional Adhesive	TileTabs
Standard Warranties	Nexus Modular Commercial Adhesive for Modular Carpet & LVT Advance Modular Backing Encore® SD Ultima Fiber
Optional Warranties	Nexus Cushion Modular Tile Tabs Nexus Cushion Adhesive Commercial High Moisture Adhesive for Modular Carpet and LVT Nexus FC Cushion Encore® 100 Fiber

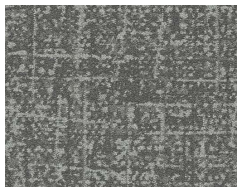
Special Technologies

ProSept® Antimicrobial	Optional
ProTex® Soil Release	Standard
Sentir® Odor-Blocker	Optional

Environmental Specifications & Tests

NSF 140:	Platinum Certified
Total Recycled Content	51.5%
Radiant Panel	Class 1
Smoke Density	Less than 450 flaming (ASTM E 662)
Static Test	Less than 3 kv (AATCC-134)
ADA Compliance	Compliant For Accessible Routes
Pill Test	Yes
Lightfastness	Yes

Colorways



2959 Limestone



2960 Feldspar



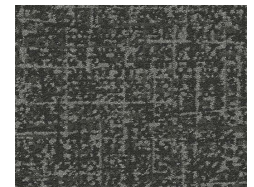
2961 Soapstone



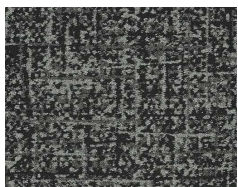
2962 Gneiss



2963 Dolostone



2964 Slate



2965 Quartz



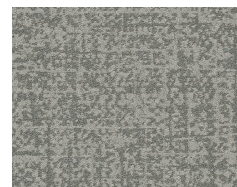
2966 Marble



2967 Shale



2968 Talc



2969 Sandstone