



**Installation Methods:** Brick, Monolithic, Ashlar, Quarter Turn

Product Specifications

<b>Construction</b>	Textured Patterned Loop
<b>Backing</b>	Nexus® Modular
<b>Dye Method</b>	Solution Dyed
<b>Fiber Type</b>	Encore® SD Ultima® (with recycled content)
<b>Face Weight</b>	32 oz./sy (1085 grams/m2)
<b>Pile Density</b>	14308 oz./y3 (530.55 kg/m3)
<b>Pattern Repeat</b>	N/A
<b>Gauge</b>	1/10 (3.94 rows/cm)
<b>Stitches Per Inch</b>	10 stitches/in (3.94 stitches/cm)
<b>Standard Size</b>	24" x 24" approx. (60.96cm x 60.96cm)
<b>Standard Adhesive</b>	Commercialon Premium Modular Adhesive
<b>Optional Adhesive</b>	TileTabs, Advance Modular Carpet   Cushion Adhesive, Nexus Cushion Modular Adhesive
<b>Standard Warranties</b>	<b>Nexus Modular Commercialon Adhesive for Modular Carpet &amp; LVT Encore® SD Ultima Fiber</b>
<b>Optional Warranties</b>	<b>Nexus Cushion Modular Nexus FC Cushion Advance Modular Backing Tile Tabs Nexus Cushion Adhesive Advance Modular Adhesive Encore® 100 Fiber</b>

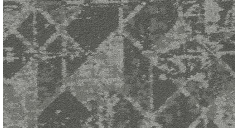
Special Technologies

<b>ProSept® Antimicrobial</b>	Optional
<b>ProTex® Soil Release</b>	Standard
<b>Sentir® Odor-Blocker</b>	Optional

Environmental Specifications & Tests

<b>NSF 140:</b>	Gold Certified
<b>Indoor Air Quality</b>	GLP9716
<b>Total Recycled Content</b>	42.9%
<b>Radiant Panel</b>	Class 1
<b>Smoke Density</b>	Less than 450 flaming (ASTM E 662)
<b>Static Test</b>	Less than 3 kv (AATCC-134)
<b>ADA Compliance</b>	Compliant For Accessible Routes
<b>Pill Test</b>	Yes
<b>Lightfastness</b>	Yes

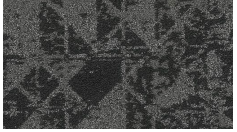
Colorways



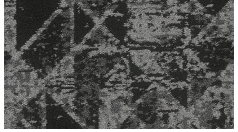
2959 Limestone



2960 Feldspar



2961 Soapstone



2965 Quartz



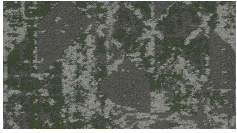
2966 Marble



2967 Shale



2969 Sandstone



3278 Limestone...



3279 Feldspar M...



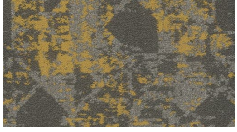
3280 Soapstone...



3281 Sandstone...



3282 Quartz Jade



3283 Marble G...



3284 Shale Ice

[www.jjflooringgroup.com](http://www.jjflooringgroup.com)