



**Installation Methods:** Herringbone, Basketweave, Brick, Monolithic, Ashlar

Product Specifications

<b>Construction</b>	Multi-Level Tip Sheared Loop
<b>Backing</b>	Nexus® Modular
<b>Dye Method</b>	Solution/Yarn Dyed
<b>Fiber Type</b>	Encore® BCF (with recycled content)
<b>Face Weight</b>	21 oz./sy (712 grams/m2)
<b>Pile Density</b>	7370 oz./y3 (273.28 kg/m3)
<b>Pattern Repeat</b>	N/A
<b>Gauge</b>	1/12 (4.72 rows/cm)
<b>Stitches Per Inch</b>	8.83 stitches/in (3.48 stitches/cm)
<b>Standard Size</b>	18" x 36" approx. (45.72cm x 91.44cm)
<b>Standard Adhesive</b>	Commercial Premium Modular Adhesive
<b>Optional Adhesive</b>	TileTabs
<b>Standard Warranties</b>	<b>Nexus Modular Commercial Adhesive for Modular Carpet &amp; LVT Advance Modular Backing Encore® BCF (with ColorLoc Plus)</b>
<b>Optional Warranties</b>	<b>Nexus Cushion Modular Tile Tabs Nexus Cushion Adhesive Commercial High Moisture Adhesive for Modular Carpet and LVT Nexus FC Cushion Encore® 100 Fiber</b>

Special Technologies

<b>Colorloc® Plus</b>	Standard
<b>ProSept® Antimicrobial</b>	Optional
<b>ProTex® Soil Release</b>	Standard
<b>Sentir® Odor-Blocker</b>	Optional

Environmental Specifications & Tests

<b>NSF 140:</b>	Gold Certified
<b>Indoor Air Quality</b>	GLP9716
<b>Total Recycled Content</b>	44.5%
<b>Radiant Panel</b>	Class 1
<b>Smoke Density</b>	Less than 450 flaming (ASTM E 662)
<b>Static Test</b>	Less than 3 kv (AATCC-134)
<b>ADA Compliance</b>	Compliant For Accessible Routes
<b>Pill Test</b>	Yes
<b>Lightfastness</b>	Yes

Colorways



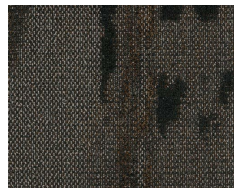
2344 Silica



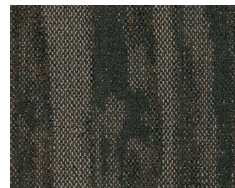
2345 Kiln



2348 Flint



2351 Burnished



2354 Adobe



3618 Pebble



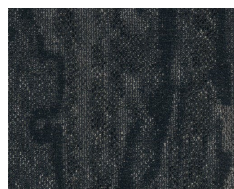
3619 Graphite



3620 Evergreen



3621 Cerulean



3622 Ink