

Product Specifications

Construction	Textile Composite
Backing	Kinetex Felt Cushion
Dye Method	Solution Dyed
Wear Layer	100% Solution Dyed Polyester
Pattern Repeat	N/A
Total Weight	4.5 oz - 5.2 oz/ square foot
Total Thickness	.205 inches
Dimensions:	18" x 36" modules
Standard Adhesive	Kinetex Adhesive
Packaging	16 modules per box (72 sq.ft)
Standard Warranties	Kinetex Adhesive Kinetex

Special Technologies

Kinetex ProTex®	Standard
------------------------	----------

Environmental Specifications & Tests

Carbon Footprint:	Carbon Neutral
Recyclability:	100% Closed-loop Recyclable
NSF 140:	Platinum Certified
Indoor Air Quality	GLP2690
Total Recycled Content:	47%
Radiant Panel	Class 1
Smoke Density	Less then 450 flaming (ASTM E 662)
Static Test	Less then 3 kv (AATCC-134)
ADA Compliance	Compliant For Accessible Routes
Pill Test	Yes
Lightfastness	Yes

Installation Methods: Parquet, Herringbone, Basketweave, Ashlar

Colorways



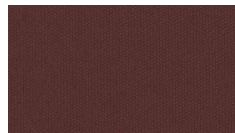
1702 Guide



1703 Roll



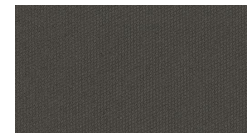
1704 Shunt



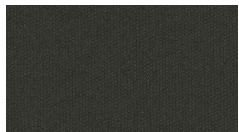
1705 Nudge



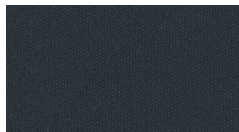
1706 Forge



1707 Advance



1708 Outpace



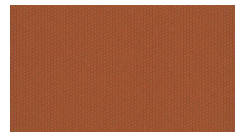
1709 Breakthro...



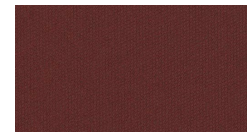
2368 March



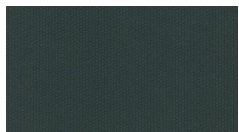
2369 Rush



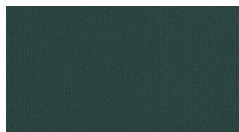
2370 Shoot



2371 Pitch



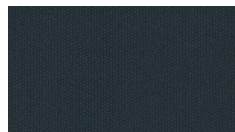
2372 Cast



2373 Drive



2374 Prompt



2375 Catapult