



Product Specifications

Construction	Textile Composite
Backing	Kinetex Felt Cushion
Dye Method	Solution Dyed
Wear Layer	Polyester - Applied Pattern
Pattern Repeat	N/A
Total Weight	4.5 oz - 5.2 oz/ square foot
Total Thickness	.205 inches
Dimensions:	24" x 24" modules
Standard Adhesive	Kinetex Adhesive
Packaging	18 modules per box (72 sq.ft)
Standard Warranties	Kinetex Adhesive Kinetex

Special Technologies

Kinetex ProTex®	Standard
------------------------	----------

Environmental Specifications & Tests

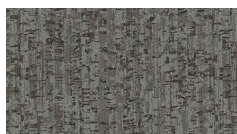
Carbon Footprint:	Carbon Neutral
Recyclability:	100% Closed-loop Recyclable
NSF 140:	Platinum Certified
Indoor Air Quality	GLP2690
Total Recycled Content:	47%
Radiant Panel	Class 1
Smoke Density	Less then 450 flaming (ASTM E 662)
Static Test	Less then 3 kv (AATCC-134)
ADA Compliance	Compliant For Accessible Routes
Pill Test	Yes
Lightfastness	Yes

Installation Methods: Brick, Ashlar, Quarter Turn

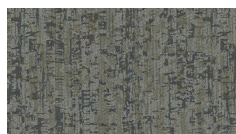
Colorways



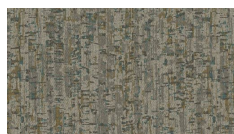
2182 Stein



2183 Beaker



2184 Jar



2185 Bottle



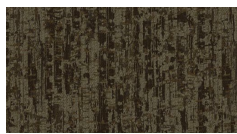
2186 Vessel



2187 Decanter



2188 Cask



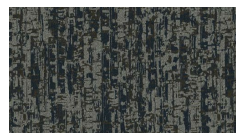
2189 Basin



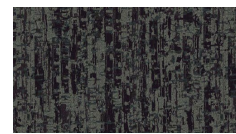
2190 Carafe



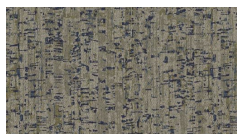
2191 Barrel



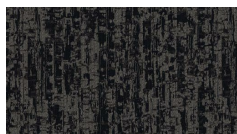
2192 Canteen



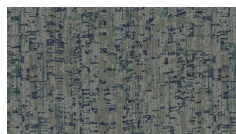
2193 Cruet



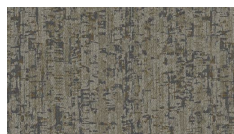
2194 Caisson



2195 Magnum



2196 Jug



2197 Drum