



**Installation Methods:** Brick, Ashlar, Quarter Turn

### Product Specifications

<b>Construction</b>	Patterned Loop
<b>Backing</b>	Nexus® Modular
<b>Dye Method</b>	Solution Dyed
<b>Fiber Type</b>	Encore® SD Ultima® (with recycled content)
<b>Face Weight</b>	16 oz./sy (543 grams/m2)
<b>Pile Density</b>	5709 oz./y3 (211.69 kg/m3)
<b>Pattern Repeat</b>	N/A
<b>Gauge</b>	1/12 (4.72 rows/cm)
<b>Standard Size</b>	24" x 24" approx. (60.96cm x 60.96cm)
<b>Standard Adhesive</b>	Commercial Premium Modular Adhesive
<b>Optional Adhesive</b>	TileTabs
<b>Standard Warranties</b>	<b>Nexus Modular Commercial Adhesive for Modular Carpet &amp; LVT Advance Modular Backing Encore® SD Ultima Fiber</b>
<b>Optional Warranties</b>	<b>Nexus Cushion Modular Tile Tabs Nexus Cushion Adhesive Commercial High Moisture Adhesive for Modular Carpet and LVT Nexus FC Cushion Encore® 100 Fiber</b>

### Special Technologies

<b>ProSept® Antimicrobial</b>	Optional
<b>ProTex® Soil Release</b>	Standard
<b>Sentir® Odor-Blocker</b>	Optional

### Environmental Specifications & Tests

<b>NSF 140:</b>	Gold Certified
<b>Indoor Air Quality</b>	GLP9716
<b>Total Recycled Content</b>	46.3%
<b>Radiant Panel</b>	Class 1
<b>Smoke Density</b>	Less than 450 flaming (ASTM E 662)
<b>Static Test</b>	Less than 3 kv (AATCC-134)
<b>ADA Compliance</b>	Compliant For Accessible Routes
<b>Pill Test</b>	Yes
<b>Lightfastness</b>	Yes

### Colorways



3633 Moonstone



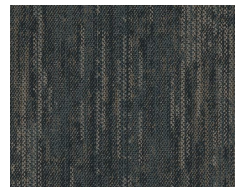
3634 Toasted Ash



3635 Cinder Smoke



3636 Sandalwood



3637 Marine



3638 Baltic



3639 Inkwel



3640 Nightfall