



Installation Methods: Brick, Monolithic, Ashlar

Product Specifications

Construction	Tip Sheared Patterned Loop
Backing	Nexus® Modular
Dye Method	Solution Dyed
Fiber Type	Encore® SD Ultima® (with recycled content)
Face Weight	26 oz./sy (882 grams/m2)
Pile Density	7514 oz./y3 (278.62 kg/m3)
Pattern Repeat	N/A
Gauge	1/12 (4.72 rows/cm)
Stitches Per Inch	10.33 stitches/in (4.07 stitches/cm)
Standard Size	24" x 24" approx. (60.96cm x 60.96cm)
Standard Adhesive	Commercialon Premium Modular Adhesive
Optional Adhesive	TileTabs, Advance Modular Carpet Cushion Adhesive, Nexus Cushion Modular Adhesive
Standard Warranties	Nexus Modular Commercialon Adhesive for Modular Carpet & LVT Encore® SD Ultima Fiber
Optional Warranties	Nexus Cushion Modular Nexus FC Cushion Advance Modular Backing Tile Tabs Nexus Cushion Adhesive Advance Modular Adhesive Encore® 100 Fiber

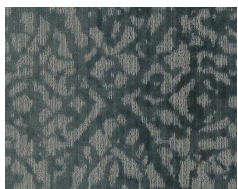
Special Technologies

ProSept® Antimicrobial	Standard
ProTex® Soil Release	Standard
Sentir® Odor-Blocker	Optional

Environmental Specifications & Tests

NSF 140:	Gold Certified
Indoor Air Quality	GLP9716
Total Recycled Content	44%
Radiant Panel	Class 1
Smoke Density	Less than 450 flaming (ASTM E 662)
Static Test	Less than 3 kv (AATCC-134)
ADA Compliance	Compliant For Accessible Routes
Pill Test	Yes
Lightfastness	Yes

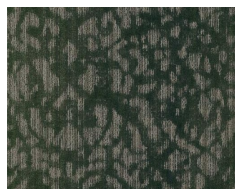
Colorways



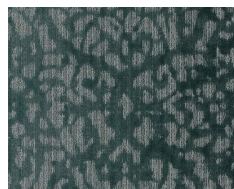
3228 Sky



3229 Soft Grey



3230 Pine



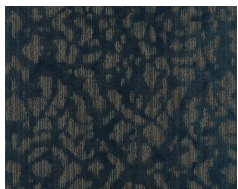
3231 Teal



3232 Coffee



3233 Terra



3234 Sailor



3235 Meadowlark



3236 Sandstone



3237 Smoke