



Installation Methods: Parquet, Herringbone, Basketweave, Brick, Ashlar

Product Specifications

Construction	Patterned Loop
Backing	Nexus® Modular
Dye Method	Solution Dyed
Fiber Type	Encore® SD Ultima® (with recycled content)
Face Weight	22 oz./sy (746 grams/m2)
Pile Density	6509 oz./y3 (241.36 kg/m3)
Pattern Repeat	N/A
Gauge	1/12 (4.72 rows/cm)
Standard Size	18" x 36" approx. (45.72cm x 91.44cm)
Standard Adhesive	Commercial Premium Modular Adhesive
Optional Adhesive	TileTabs
Standard Warranties	Nexus Modular Commercial Adhesive for Modular Carpet & LVT Encore® SD Ultima Fiber
Optional Warranties	Nexus Cushion Modular Tile Tabs Nexus Cushion Adhesive Commercial High Moisture Adhesive for Modular Carpet and LVT Nexus FC Cushion Encore® 100 Fiber

Special Technologies

ProSept® Antimicrobial	Optional
ProTex® Soil Release	Standard
Sentir® Odor-Blocker	Optional

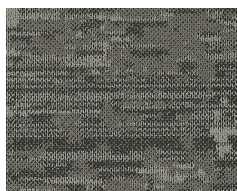
Environmental Specifications & Tests

NSF 140:	Gold Certified
Indoor Air Quality	GLP9716
Total Recycled Content	46.65%
Radiant Panel	Class 1
Smoke Density	Less than 450 flaming (ASTM E 662)
Static Test	Less than 3 kv (AATCC-134)
ADA Compliance	Compliant For Accessible Routes
Pill Test	Yes
Lightfastness	Yes

Colorways



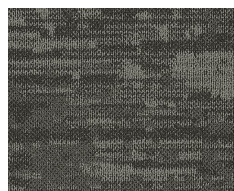
3641 Juniper



3642 Hazelwood



3643 Alpenglow



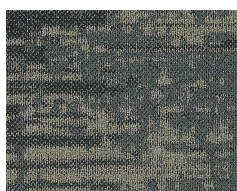
3644 Hearth



3645 Sandstone



3646 Crisp Air



3647 Blue Spruce



3648 Wild Indigo