



Product Specifications

Construction	Textured Loop
Backing	PremierBac® Plus
Dye Method	Solution Dyed
Fiber Type	Encore® SD Ultima® (with recycled content)
Face Weight	20 oz./sy (678 grams/m2)
Pile Density	5441 oz./y3 (201.76 kg/m3)
Pattern Repeat	.25" (w) x .25" (l) approx. (.64cm x .64cm)
Gauge	1/10 (3.94 rows/cm)
Stitches Per Inch	8 stitches/in (3.15 stitches/cm)
Standard Width	12 ft 3.66 m
Standard Adhesive	Commercialon Premium Carpet Adhesive
Standard Warranties	PremierBac Plus Commercialon Premium Broadloom Adhesive Encore® SD Ultima Fiber
Optional Warranties	Endure Plus TitanBac Plus Encore® 100 Fiber

Special Technologies

ProSept® Antimicrobial	Optional
ProTex® Soil Release	Standard
Sentir® Odor-Blocker	Optional

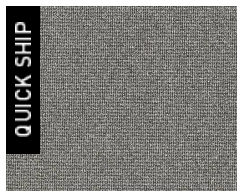
Environmental Specifications & Tests

NSF 140:	Gold Certified
Total Recycled Content	51.6%
Radiant Panel	Class 1
Smoke Density	Less than 450 flaming (ASTM E 662)
Static Test	Less than 3 kv (AATCC-134)
ADA Compliance	Compliant For Accessible Routes
Pill Test	Yes
Lightfastness	Yes

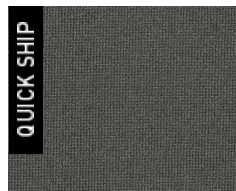
Colorways



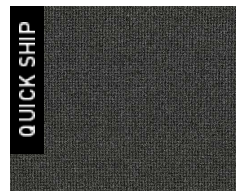
1800 Camber



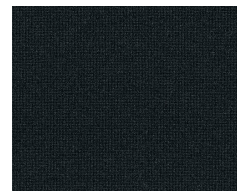
1801 Pilaster



1802 Gambrel



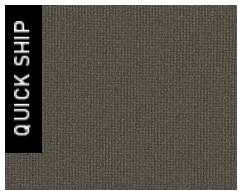
1804 Truss



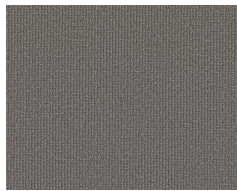
1805 Joist



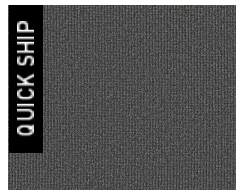
1806 Spandrel



3397 Bracket



3398 Portico



3399 Transom