



Product Specifications

Construction	Textile Composite
Backing	Kinetex Felt Cushion
Dye Method	Solution Dyed
Wear Layer	Polyester - Applied Pattern
Pattern Repeat	N/A
Total Weight	4.5 oz - 5.2 oz/ square foot
Total Thickness	.205 inches
Dimensions:	24" x 24" modules
Standard Adhesive	Kinetex Adhesive
Packaging	18 modules per box (72 sq.ft)
Standard Warranties	Kinetex Adhesive Kinetex

Special Technologies

Environmental Specifications & Tests

Carbon Footprint:	Carbon Neutral
Recyclability:	100% Closed-loop Recyclable
NSF 140:	Platinum Certified
Indoor Air Quality	GLP2690
Total Recycled Content:	47%
Radiant Panel	Class 1
Smoke Density	Less than 450 flaming (ASTM E 662)
Static Test	Less than 3 kv (AATCC-134)
ADA Compliance	Compliant For Accessible Routes
Pill Test	Yes
Lightfastness	Yes

Installation Methods: Brick, Ashlar, Quarter Turn

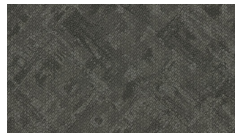
Colorways



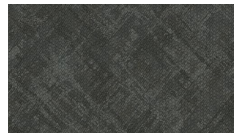
3699 Galactic



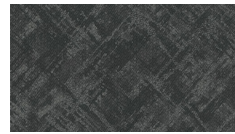
3700 Space



3701 Solar



3702 Time



3703 Star



3704 Clouds



3705 Particles



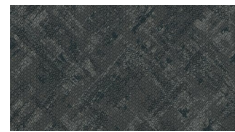
3706 Interstellar



3707 System



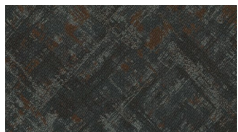
3708 Ring



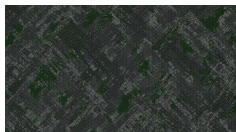
3709 Distant



3710 Object



3711 Spiral



3712 Mass