



Product Specifications

<b>Wear Layer</b>	20 mil
<b>Thickness</b>	5mm
<b>Finish / Coating</b>	Enhanced UV Urethane w/ Ceramic Bead
<b>Edge Treatment</b>	None
<b>Dimensions:</b>	18" x 36"
<b>Standard Adhesive</b>	Commercialon® LVT Adhesive
<b>Backing Class</b>	Commercial Grade
<b>Commercial Traffic</b>	Heavy Commercial
<b>Standard Warranties</b>	<b>10 Year LVT</b>

Packaging

<b>Sq.ft. per piece / carton</b>	4.5 / 27
<b>Weight per piece / carton</b>	8.3 (lbs) / 49.77 (lbs)
<b>Pieces per box</b>	6
<b>Boxes per pallet</b>	40

Special Technologies

<b>Added Antimicrobial</b>	ZPT (Zinc Protective Technology)
----------------------------	----------------------------------

Environmental Specifications & Tests

<b>Indoor Air Quality</b>	FloorScore® Certified
<b>LEED v4</b>	Contributes to IAQ: Low Emitting Materials
<b>End of Life</b>	100% Recyclable
<b>Radiant Panel</b>	Class 1
<b>ADA Compliance</b>	Compliant For Accessible Routes
<b>ASTM F2055 (Size and Tolerance)</b>	Passes
<b>ASTM F386 (Thickness)</b>	Passes
<b>ASTM F1914 (Residual Indentation)</b>	Passes
<b>ASTM F137 (Flexibility)</b>	Passes
<b>ASTM F2199 (Dimensional Stability)</b>	Passes
<b>ASTM F925 (Chemical Resistance)</b>	Passes
<b>ASTM F1514 (Resistance to Heat)</b>	Passes
<b>ASTM F1515 (Resistance to Light)</b>	Passes
<b>ASTM E648 (Critical Radiant Flux)</b>	Passes
<b>ASTM E662 (Optical Smoke Density)</b>	Passes
<b>ASTM C1028 (Slip Resistance)</b>	Passes
<b>ASTM F970 (Static Load)</b>	Passes

**Installation Methods:** Parquet

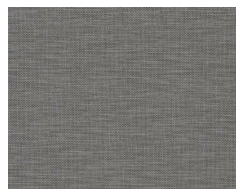
Colorways



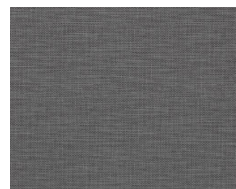
1016 Straw



1017 Nara



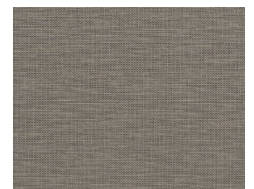
1018 Kyoto



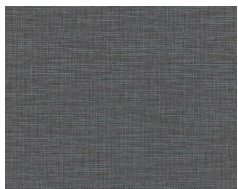
1019 Edo



1020 Rush



1021 Goza



1022 Wabi



1023 Zen