



Installation Methods: Parquet, Herringbone, Basketweave, Brick, Monolithic, Ashlar

Product Specifications

Construction	Patterned Loop
Backing	Nexus® Modular
Dye Method	Solution Dyed
Fiber Type	Encore® SD (with recycled content)
Face Weight	22 oz./sy (746 grams/m2)
Pile Density	7691 oz./y3 (285.19 kg/m3)
Pattern Repeat	N/A
Gauge	1/12 (4.72 rows/cm)
Stitches Per Inch	7.83 stitches/in (3.08 stitches/cm)
Standard Size	18" x 36" approx. (45.72cm x 91.44cm)
Standard Adhesive	Commercialon Premium Modular Adhesive
Optional Adhesive	TileTabs
Standard Warranties	Nexus Modular Commercial Adhesive for Modular Carpet & LVT Advance Modular Backing Encore® SD Ultima Fiber
Optional Warranties	Nexus Cushion Modular Tile Tabs Nexus Cushion Adhesive Commercialon High Moisture Adhesive for Modular Carpet and LVT Nexus FC Cushion Encore® 100 Fiber

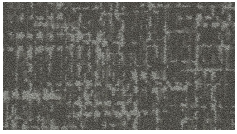
Special Technologies

ProSept® Antimicrobial	Optional
ProTex® Soil Release	Standard
Sentir® Odor-Blocker	Optional

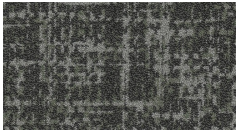
Environmental Specifications & Tests

NSF 140:	Gold Certified
Indoor Air Quality	GLP9716
Total Recycled Content	38.7%
Radiant Panel	Class 1
Smoke Density	Less than 450 flaming (ASTM E 662)
Static Test	Less than 3 kv (AATCC-134)
ADA Compliance	Compliant For Accessible Routes
Pill Test	Yes
Lightfastness	Yes

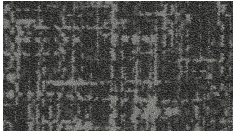
Colorways



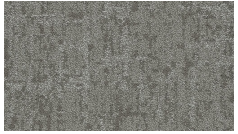
3673 Sand Blast



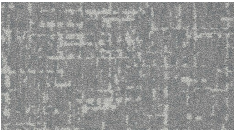
3674 Suede Mo...



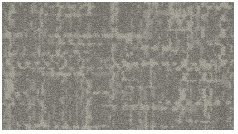
3675 Suede



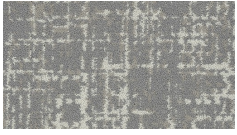
3676 Sand



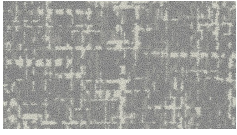
3677 Salty Bre...



3678 Salty



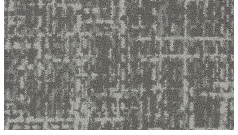
3679 Desert Mist



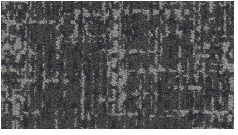
3680 Mist



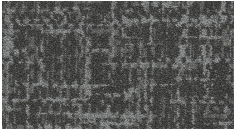
3681 Ocean Ha...



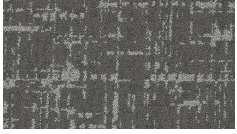
3682 Haze



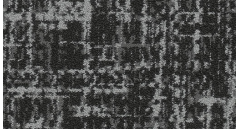
3683 Night Sky



3684 Sky



3699 Evening S...



3700 Shadow

www.jjflooringgroup.com