



Product Specifications

Construction	Tip Sheared Patterned Loop
Backing	PremierBac® Plus
Dye Method	Solution Dyed
Fiber Type	Encore® SD Ultima® (with recycled content)
Face Weight	27 oz./sy (915 grams/m2)
Pile Density	8124 oz./y3 (301.24 kg/m3)
Pattern Repeat	72.00" (w) x 59.00" (l) approx. (182.88cm x 149.86cm)
Gauge	1/12 (4.72 rows/cm)
Stitches Per Inch	10.67 stitches/in (4.20 stitches/cm)
Standard Width	12 ft 3.66 m
Standard Warranties	PremierBac Plus Encore® SD Ultima Fiber
Optional Warranties	Endure Plus TitanBac Plus Encore® 100 Fiber

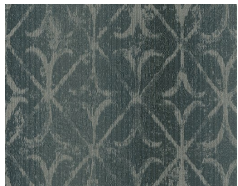
Special Technologies

ProSept® Antimicrobial	Standard
ProTex® Soil Release	Standard
Sentir® Odor-Blocker	Optional

Environmental Specifications & Tests

NSF 140:	Gold Certified
Indoor Air Quality	GLP5055
Total Recycled Content	48.9%
Radiant Panel	Class 1
Smoke Density	Less than 450 flaming (ASTM E 662)
Static Test	Less than 3 kv (AATCC-134)
ADA Compliance	Compliant For Accessible Routes
Pill Test	Yes
Lightfastness	Yes

Colorways



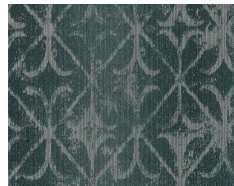
3228 Sky



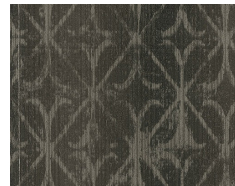
3229 Soft Grey



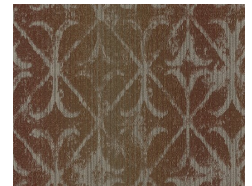
3230 Pine



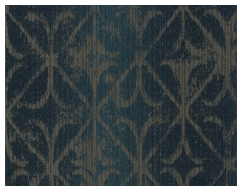
3231 Teal



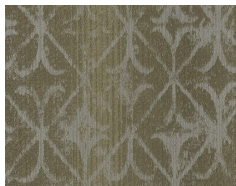
3232 Coffee



3233 Terra



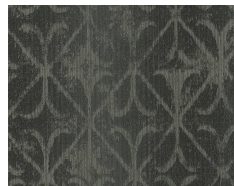
3234 Sailor



3235 Meadowla...



3236 Sandstone



3237 Smoke