



Product Specifications

| | |
|----------------------------|---|
| Construction | Textile Composite |
| Backing | Polyester Felt Cushion |
| Dye Method | Solution Dyed |
| Wear Layer | 100% Solution Dyed Polyester |
| Pattern Repeat | N/A |
| Total Weight | 4.5 oz - 5.2 oz/ square foot |
| Total Thickness | .205 inches |
| Dimensions: | 18" x 36" modules |
| Standard Adhesive | Kinetex Adhesive |
| Packaging | 16 modules per box (72 sq.ft) |
| Standard Warranties | Kinetex Adhesive Kinetex |

Special Technologies

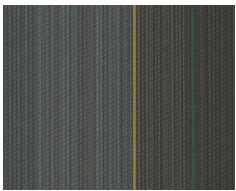
| | |
|------------------------|----------|
| Kinetex ProTex® | Standard |
|------------------------|----------|

Environmental Specifications & Tests

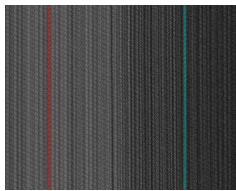
| | |
|--------------------------------|------------------------------------|
| Carbon Footprint: | Carbon Neutral |
| Recyclability: | 100% Closed-loop Recyclable |
| NSF 140: | Platinum Certified |
| Indoor Air Quality | GLP2690 |
| Total Recycled Content: | 47% |
| Radiant Panel | Class 1 |
| Smoke Density | Less than 450 flaming (ASTM E 662) |
| Static Test | Less than 3 kv (AATCC-134) |
| ADA Compliance | Compliant For Accessible Routes |
| Pill Test | Yes |
| Lightfastness | Yes |

Installation Methods: Parquet, Herringbone, Basketweave, Ashlar

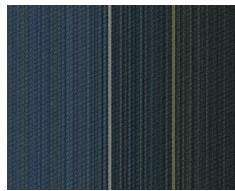
Colorways



1787 Opaque S...



1789 Shadow S...



1799 Eclipse St...