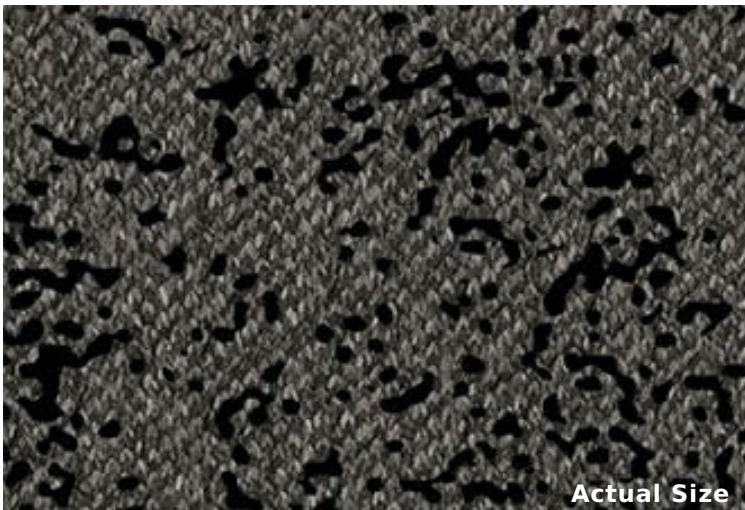




Pattern Reference



Actual Size



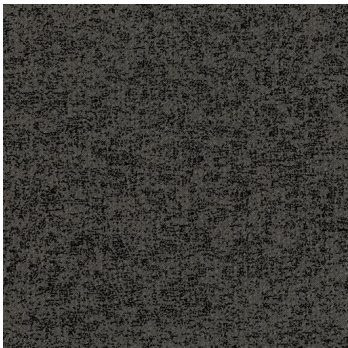
Stipple (1838)

Product Quick Specs

Style Name/Number	Stipple 1838
Color Name/Number	Dappled 2684
Construction	Textile Composite
Standard Backing	Kinetex Felt Cushion
Dye Method	Solution Dyed
Fiber Type	Polyester - Applied Pattern
Face Weight	12 oz./sy (407 grams/m2)
Pattern Repeat	N/A
Dimensions	24" x 24" modules
Standard Adhesive	Kinetex Adhesive
Smoke Density	Less then 450 flaming
Static Test	Less then 3 kv
Standard Warranties	Kinetex Adhesive Kinetex



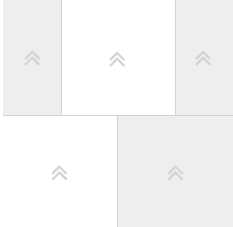
Products Installed



Stipple 1838 Modular
2684 Dappled



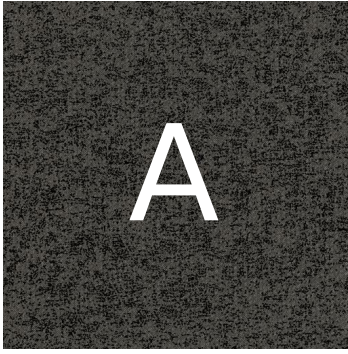
Installation Method



Brick (24x24)

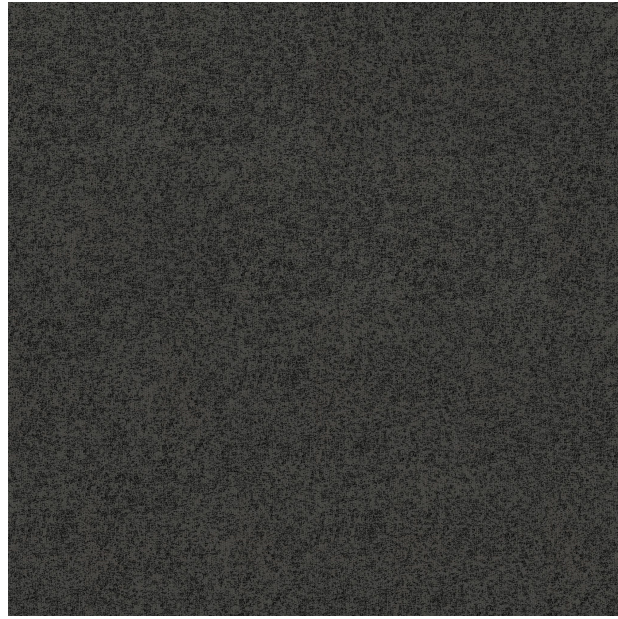
This three dimensional rendering is for visualization purposes only and may not be an exact representations of the selected products. Pile heights may vary from product to product and adhesive requirements may vary depending on product selection. The review of actual product samples are recommended before final selection. Please contact your J+J Flooring Group sales representative with any questions. This unique carpet design is protected under the U.S. Copyright Act of 1976. Any unauthorized copying or duplication of this design constitutes copyright infringement in violation of federal law.

Keys



Stipple 1838 Modular
2684 Dapped

kinetex



Pattern Diagram

