

kinetex

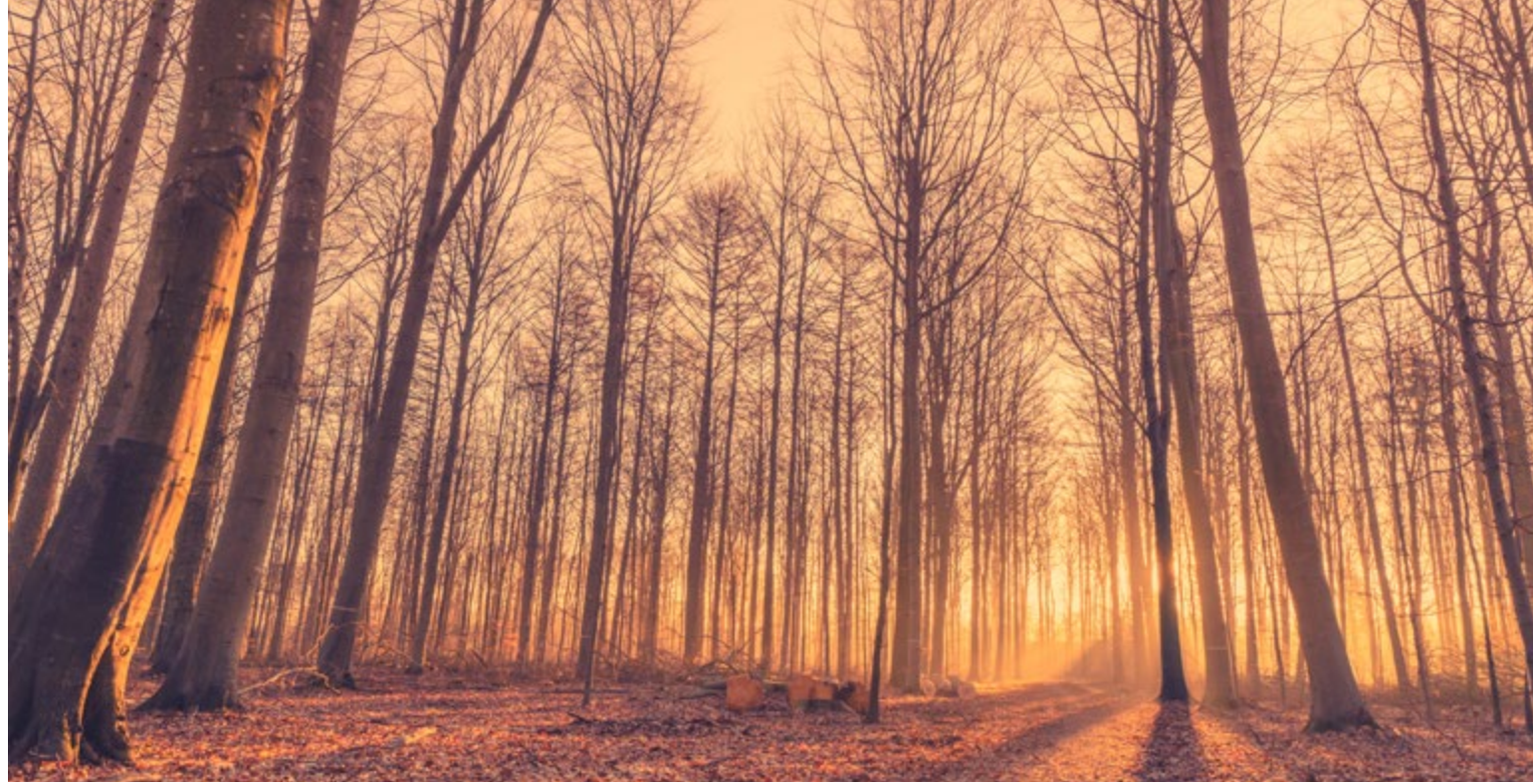
12" x 48" MODULAR

Timber



FLOORING

Timber



INSPIRATION

Timber is an organic-inspired 12" x 48" demi-plank that features a grainy wood-like pattern created to evoke a sense of the elements in nature. Timber features the highly functional and high performing attributes of our original Kinetex products and adds boundless design possibilities. The fibrous, stringy bark pattern is richly colored with grays and browns, along with blushes of blue and flax representing the different varieties and species of majestic hardwoods.



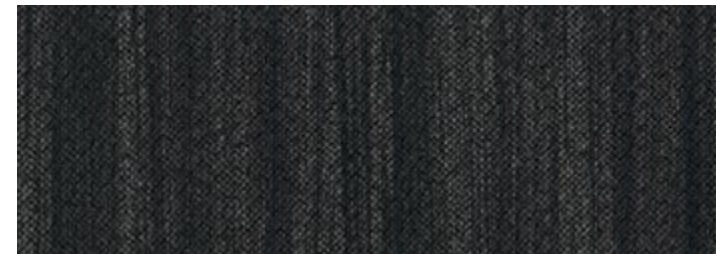
[cover] **TIMBER** // SASSAFRAS // ashlar
[right] **TIMBER** // IRONWOOD // herringbone



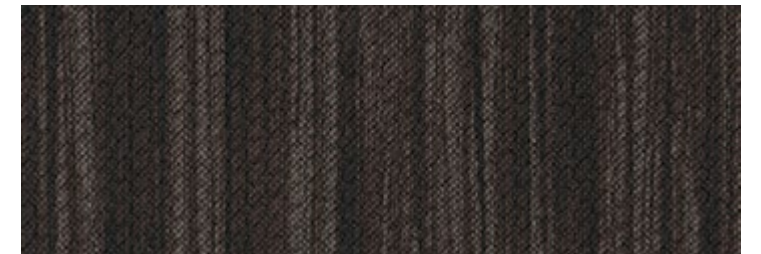
TIMBER // CATALPA // basketweave



Timber 12" x 48" MODULAR



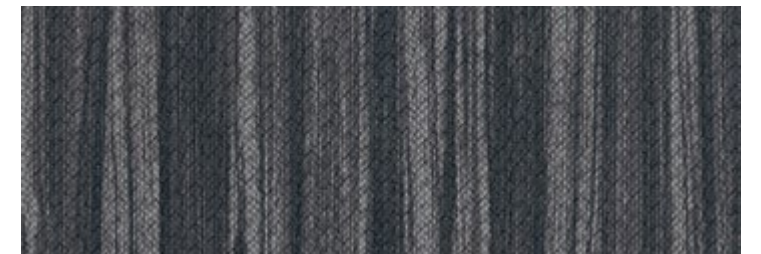
COLOR 1920
ironwood



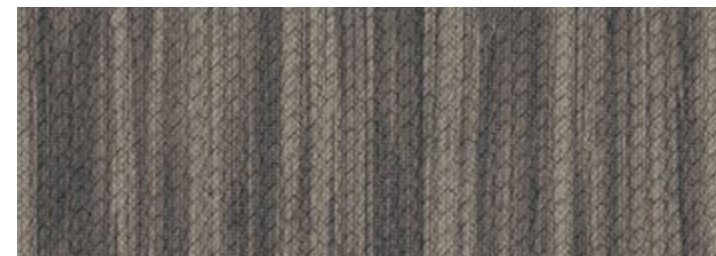
COLOR 1921
sassafras



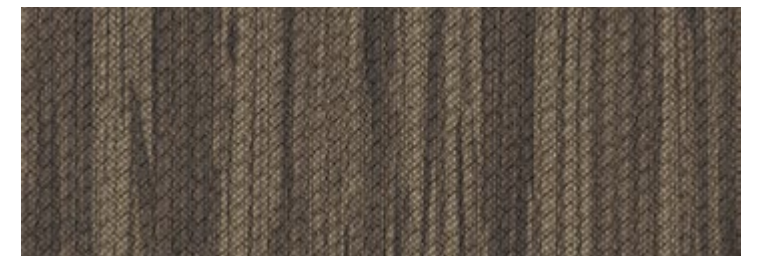
COLOR 1922
spruce



COLOR 1923
aspen



COLOR 1924
catalpa



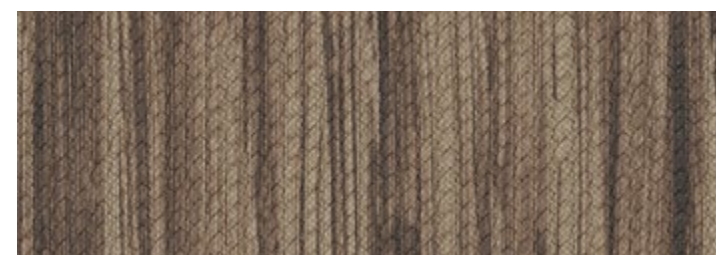
COLOR 1925
cypress



COLOR 1926
buckthorn



COLOR 1927
sequoia

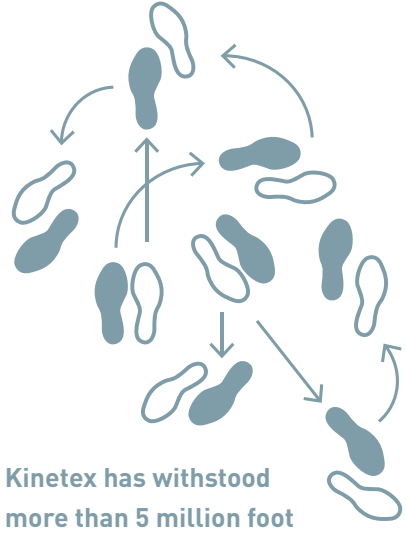


COLOR 1928
hemlock

TIMBER // CATALPA // ashlar
PROPEL II // OUTPACE // quarter-turn
[back cover] TIMBER // HEMLOCK // ashlar

1. DURABILITY

Kinetex delivers enduring performance, year after year. One of the most thoroughly tested flooring products on the market, it has outstanding dimensional stability and unparalleled crush resistance.

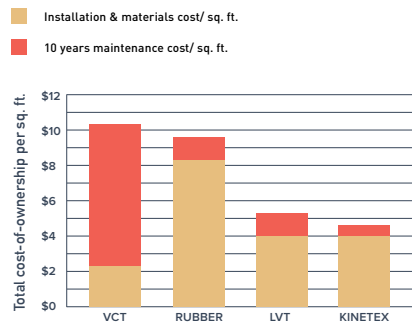


Kinetex has withstood more than 5 million foot traffic events.

2. MAINTENANCE

Tough to wear out, easy to maintain. With vacuuming and encapsulation cleaning, Kinetex looks like new, year after year. Thanks to a lightweight face construction, Kinetex retains less water than carpet and dries faster. It is easily sanitized and resists the most challenging staining agents.

Life Cycle Costs: INSTALLATION AND MAINTENANCE



3. MOISTURE TOLERANCE

The most common subfloor, concrete, can release excessive moisture and destroy floor covering systems—unless costly precautions are taken before installation. But moisture mitigation isn't necessary with Kinetex; its breathable nature allows moisture to pass through its backing, instead of trapping it underneath. Kinetex textile composite flooring will perform in elevated RH slabs up to 100%.

100% RH TOLERANCE

NO VAPOR BARRIER REQUIRED—regardless if the slab is new or old, regardless of hydrostatic pressure

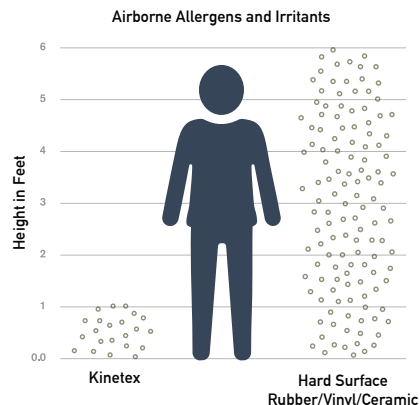
BREATHABLE No trapped moisture. 3rd party tested and verified.

Thousands of installations worldwide since 2012. NO MOISTURE-RELATED CLAIMS.

4. HEALTH

Kinetex minimizes air particulates that trigger allergies and cause infection. It easily surpasses California's 01350 requirements—the most popular U.S. standard for evaluating and restricting VOC emissions indoors.

Easy Breathing

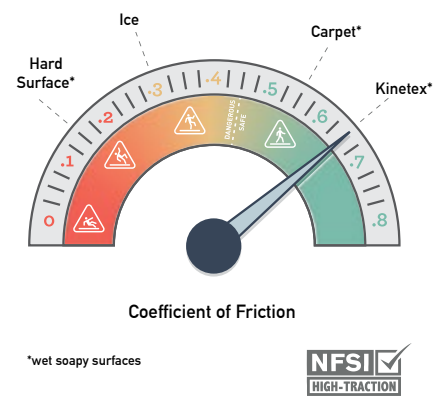


Foot Traffic Dust Emissions Test (ESO Fine Test Dust 12103-142)

5. SAFETY

Kinetex is the only wall-to-wall textile floor covering certified as High-Traction by the National Floor Safety Institute. Its innovative construction creates one of the most slip-resistant flooring surfaces ever tested—wet or dry—to prevent falls before they happen.

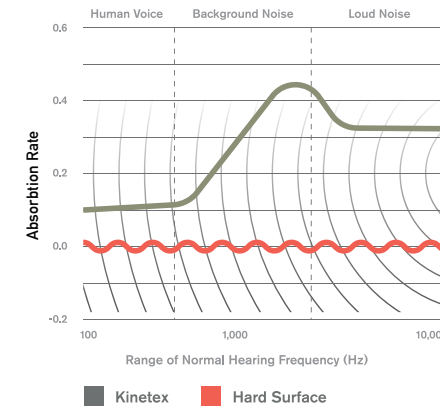
Gaining Traction



6. ACOUSTICS

Kinetex delivers unparalleled acoustic performance, with one of the highest Noise Reduction Coefficients (NRC) and Impact Insulation Classifications (IIC) ratings of any commercial flooring product.

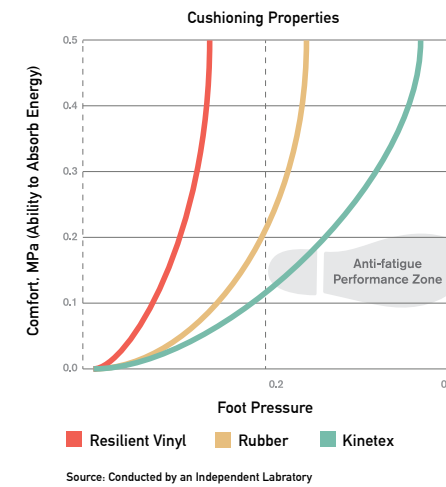
Keeping Quiet



7. COMFORT

Kinetex, a soft textile surface with a high-density backing, has exceptional anti-fatigue properties and minimal rolling resistance. Because it can absorb energy, Kinetex has the potential to reduce repetitive foot stress injuries and other injuries related to standing and frequent movement from place to place.

Step-by-Step Support

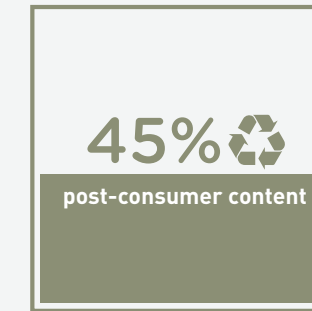


Source: Conducted by an Independent Laboratory

8. SUSTAINABILITY

Made with 45% post-consumer recycled content, each Kinetex tile contains the equivalent of 27 used water bottles. This dematerialized flooring product and its longer life mean that Kinetex has a much smaller environmental footprint than other commercial flooring options. Kinetex is NSF/ANSI-140 Platinum certified (the industry-leading standard for sustainability) and has a Red List Free DECLARE label. Furthermore, J+J Flooring has met the verification requirements for Carbon Neutral Products by purchasing offsets for 100% of its A1-A3 GWP values reported publicly in our 3rd Party Verified Environmental Production Declaration (EPD) for all annual production of Kinetex.

Second Chances



Each Kinetex tile contains the equivalent of 27 plastic water bottles.

KINETEX INSTALLATION

Installing Kinetex is as easy as traditional modular carpet, however special attention should be applied until installers gain experience with module placement. Installers should perform site and material conditioning, surface preparation, and concrete pH and moisture testing as if they were installing J+J Flooring carpet modules. Because it is such a lightweight material the modules cut very easily, reducing installation time. Kinetex uses J+J Flooring's proven adhesive systems with lifetime performance warranties.

Kinetex Adhesive

Kinetex Adhesive is formulated for Kinetex textile composite flooring products and is built to bond the textile composite to the properly prepared substrates for the life of the installation. Products with Kinetex Adhesive will perform in elevated RH slabs up to 100%.

PreFix® (optional)

PreFix includes a release liner that easily peels away to reveal pre-applied adhesive that securely anchors the Kinetex module in place. Products with PreFix will perform in elevated RH slabs up to 100%, allowing the flooring to be installed without costly moisture mitigation. PreFix offers a quick installation system and it can be added to all Kinetex products as an optional adhesive.

Please see the Kinetex installation instructions for full installation details.

TECHNOLOGIES

High-Def Color Technology

J+J Flooring achieves next-generation innovation with the development of High-Def Color Technology. This latest engineering capability provides Kinetex products with crisp color, vibrant patterns and dimensional design that rivals that of soft surface flooring.



WARRANTIES

We stand behind every aspect of Kinetex and extend certain lifetime warranties. Each warranty is covered for the useful life of the product, provided that installation and maintenance is in accordance with J+J Flooring’s Kinetex Installation instructions.

Wear Layer Warranties

Product Performance	Colorfastness to Light & Crocking	Stain Removal	Static Protection
Lifetime	Lifetime	Lifetime	Lifetime

Backing Warranties

Protection from Edge Ravel	Protection from Delamination Failure	Dimensional Stability
Lifetime	Lifetime	Lifetime



©2016 J+J Flooring Group, LLC - This unique design is protected under the U.S. Copyright Act of 1976. Any unauthorized copying or duplication of this design constitutes copyright infringement in violation of federal law. Due to the unique visual characteristics of modular carpets, pattern repeats and pattern run-off seams may appear more noticeable than in broadloom carpets. Such visual characteristics do not constitute a manufacturing defect, and as such, should be considered when selecting modular carpet and its installation.

These photographs are representations of the installation for this modular product. Your modular installation may look different than these photos depending upon individual tile placement, lighting, and overall space layout, including furnishings. Final tile placement and the resulting visual is thus the customer’s, and not J+J Flooring’s responsibility.

* J+J Flooring has met the verification requirements for Carbon Neutral Products by purchasing offsets for 100% of its A1-A3 GWP values reported publicly in our 3rd Party Verified Environmental Production Declaration (EPD) for all annual production of Kinetex.

**NRC rating is a measure of the effectiveness of a material in absorbing sound. The higher the NRC rating, the greater the ability of the flooring product to absorb airborne noise. Independent laboratory testing of Kinetex has shown an average NRC rating of 0.30 (bare concrete flooring will typically provide a NRC Rating of 0.015).

***IIC is a rating of the insulation from impact noise. The higher the IIC rating, the greater the sound insulation. Independent laboratory testing of Kinetex has shown an average IIC Rating of .64 (bare concrete flooring will typically provide an IIC Rating of 34) NOTE: Test results and testing laboratory will vary, and the above information is not guaranteed.

STYLE

timber 1825 modular

WEAR LAYER

polyester-applied pattern (produced with High-Def Color Technology)

BACKING

polyester felt cushion

TOTAL WEIGHT (nominal average)

4.5 oz - 5.2 oz/square foot

TOTAL THICKNESS (nominal average)

0.205 inches

DIMENSIONS

12 x 48 inch modules

PACKAGING

18 modules per box – 72 square feet

ENVIRONMENTAL ATTRIBUTES

CARBON FOOTPRINT

carbon neutral*

RED LIST FREE

DECLARE label

RECYCLED CONTENT

45% post-consumer

LEED SCORECARD

IEQ 4.1 and IEQ 4.3

NSF/ANSI 140 CERTIFICATION

platinum

TESTING

FLOORING RADIANT PANEL

class 1

SMOKE DENSITY

less than 450 (flaming & non-flaming)

ELECTROSTATIC PROPENSITY

less than 3.0 kv

COLORFASTNESS TO LIGHT

rating of 4.0 or greater

COLORFASTNESS TO CROCKING

rating of 4.0 or greater

WATER REPELLENCY

rating of 4.0 or greater

APPEARANCE RETENTION

4.0 or greater

SLIP RESISTANCE

Complies with ADA Guidelines for level surface
NFSI Certified High-Traction

THERMAL INSULATION

0.73

NOISE REDUCTION COEFFICIENT

NRC Rating: 0.30**

IMPACT INSULATION CLASSIFICATION

IIC Rating: 64***

STAIN RESISTANCE

resists most challenging stains

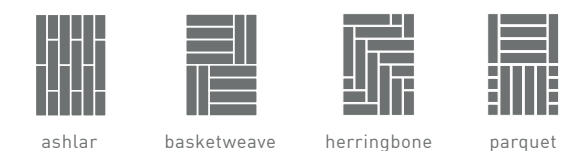
INDOOR AIR QUALITY CERTIFICATION

CRI Green Label Plus™

ADHESIVE

Kinetex adhesive (full-spread pressure-sensitive)
(optional) PreFix® pre-applied releasable adhesive

INSTALLATION METHODS



kinetex

12" x 48" MODULAR



P.O. BOX 2207

DALTON, GA 30722

P 800 241 4586

F 706 275 4433

JJFLOORING.COM

JX9222M06

carpet | lvt | kinetex



FLOORING
A DIVISION OF ENGINEERED FLOORS