

kinetex

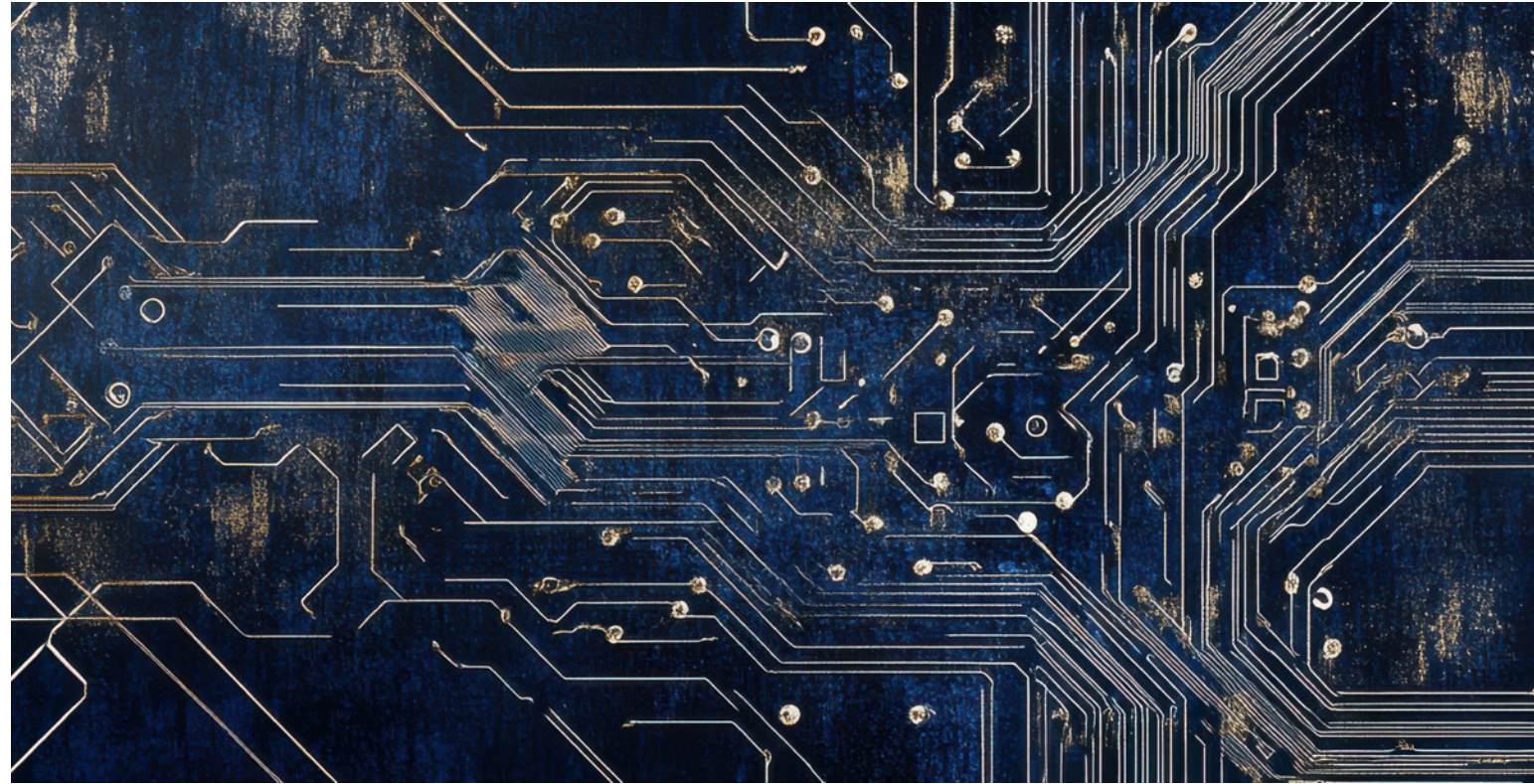
24"x24" MODULAR

Analog Analog Mono



FLOORING

Analog Analog Mono



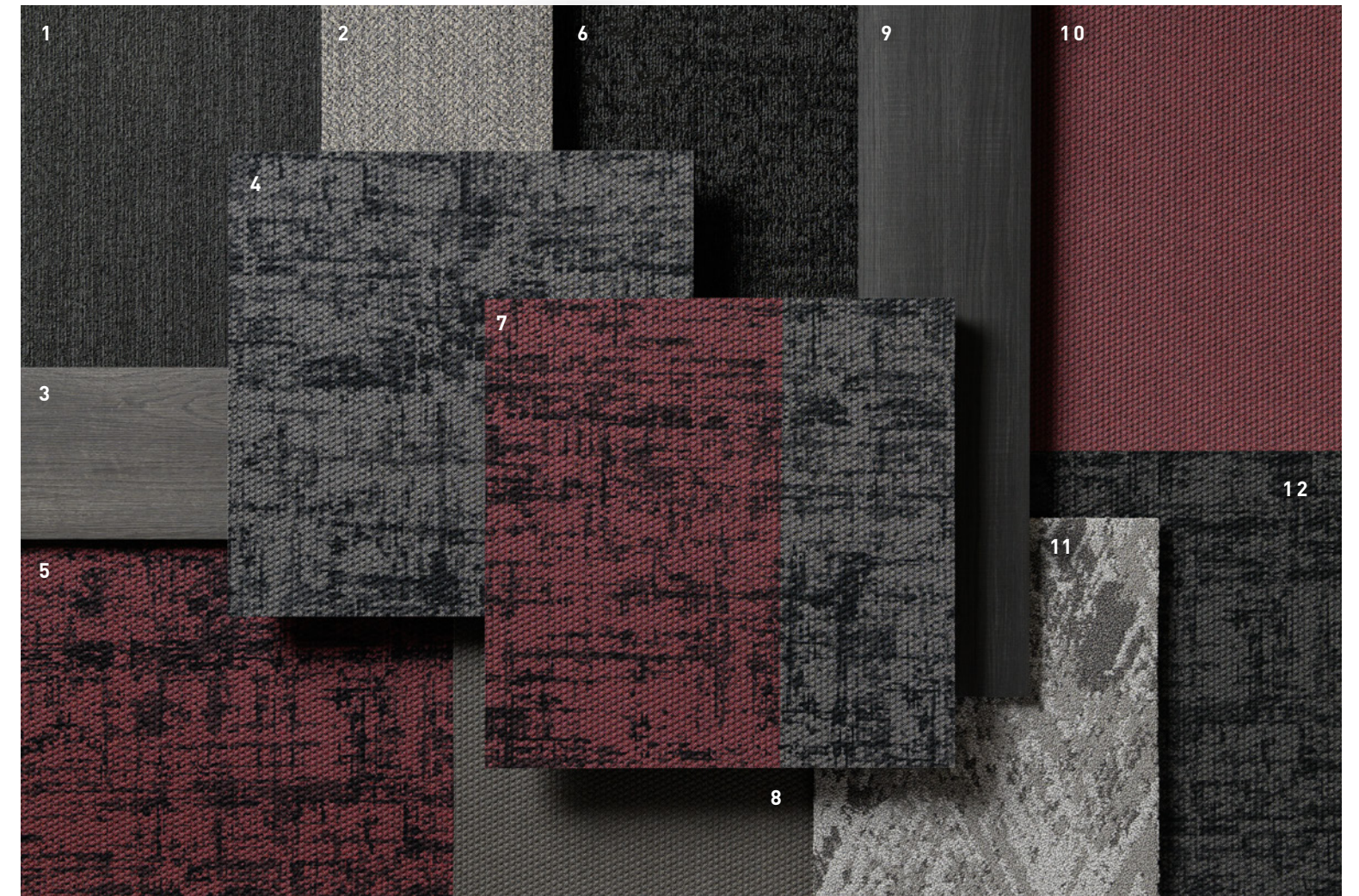
INSPIRATION

Emulating the distortion and voltage signal strokes of circuit transmissions, Analog and Analog Mono bring an inspired and unparalleled visual that is perfect for a multitude of applications. The inky grid is brush-stroked over a solid band of color on Analog Mono, while the same patterning is carried throughout its Analog partner, which utilizes two complementing colors. The fresh palette offers garnet, olive, sapphire, russets and charcoals. Both styles are available in 24" x 24" tiles.





ANALOG // COUNTERPART // brick
ANALOG MONO // LINK // brick



COORDINATES

Beyond the beauty of individual products, our flooring coordinates effortlessly across all of our product platforms - modular carpet tile, broadloom, LVT and Kinetex textile composite flooring. This offering enables you to blend a range of designs with tonal simplicity to create palettes that reflect the demands of each unique space.

1. **COLOR ZONE** // 7479 // 3223 Black // Modular

2. **JACK** // 7914 // 3422 Tie // Modular

3. **TIMELESS** // V5011 // 1062 Estate // LVT

4. **ANALOG MONO** // 1822 // 1552 Correlate // Kinetex

5. **ANALOG MONO** // 1822 // 1556 Regard // Kinetex

6. **CRAFTWORK** // 6599 + 7099 // 2210 Blacksmith // Broadloom + Modular

7. **ANALOG** // 1821 // 1544 Relate // Kinetex

8. **PROPEL II** // 1817 // 1702 Guide // Kinetex

9. **MAKE YOUR MARK** // V5012 + V5013 // 1065 Charcoal // LVT

10. **PROPEL II** // 1817 // 1705 Nudge // Kinetex

11. **ARTISTRY** // 7803 // 3684 Sky // Modular

12. **ANALOG MONO** // 1822 // 1555 Equivalent // Kinetex



COORDINATES

Beyond the beauty of individual products, our flooring coordinates effortlessly across all of our product platforms - modular carpet tile, broadloom, LVT and Kinetex textile composite flooring. This offering enables you to blend a range of designs with tonal simplicity to create palettes that reflect the demands of each unique space.

1. **TECHNIQUE** // 7804 // 3675 Suede // Modular

2. **FRAMEWORK** // V5001 // 1015 Beam // LVT

3. **PROPEL II** // 1817 // 1704 Shunt // Kinetex

4. **ANALOG MONO** // 1822 // 1554 Associate // Kinetex

5. **CURATE** // 7508 // 3690 Brindle // Modular

6. **PROPEL II** // 1817 // 1703 Roll // Kinetex

7. **ANALOG** // 1821 // 1545 Similar // Kinetex

8. **SYNERGY** // 1861 // 3700 Space // Kinetex

9. **CLASSICS II** // V5023 // 1000 Notable // LVT

10. **TECHNIQUE** // 7804 // 3673 Sandblast // Modular



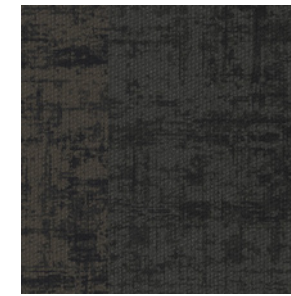
ANALOG MONO // ASSOCIATE // quarter turn
 PROPEL II // ROLL // quarter turn



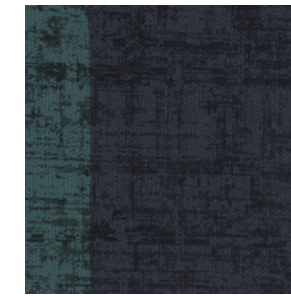
Analog 24"x24" MODULAR



COLOR 1544
relate



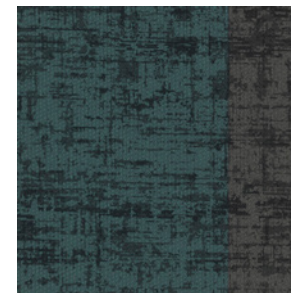
COLOR 1545
similar



COLOR 1546
equate



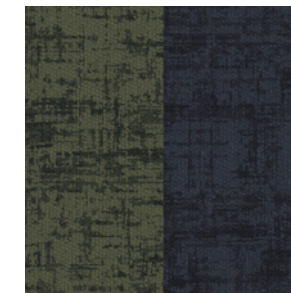
COLOR 1547
assimilate



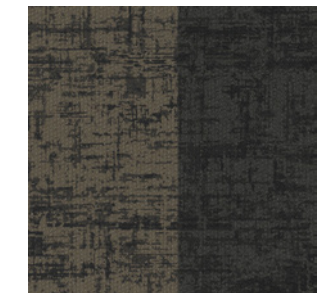
COLOR 1548
connect



COLOR 1549
parallel



COLOR 1550
interact



COLOR 1551
counterpart

Analog Mono 24"x24" MODULAR



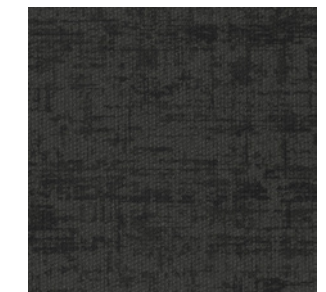
COLOR 1552
correlate



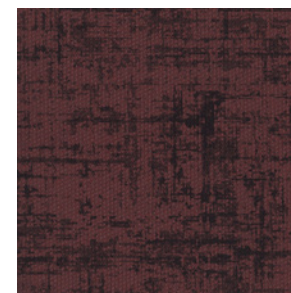
COLOR 1553
link



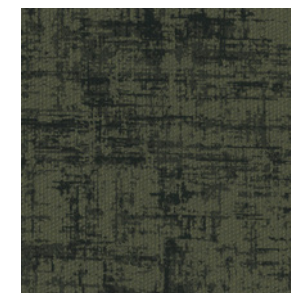
COLOR 1554
associate



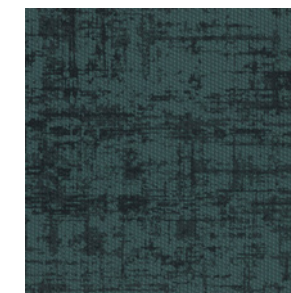
COLOR 1555
equivalent



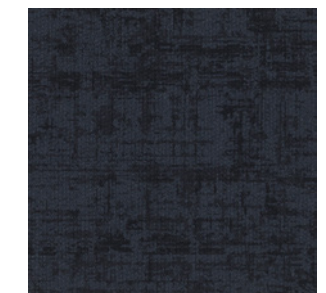
COLOR 1556
regard



COLOR 1557
correspond



COLOR 1558
resemble

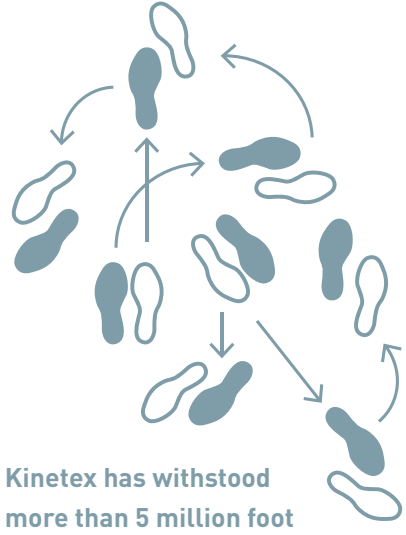


COLOR 1559
match

ANALOG // EQUATE // brick
ANALOG MONO // RESEMBLE // brick
[back cover] ANALOG MONO // EQUIVALENT // quarter turn

1. DURABILITY

Kinetex delivers enduring performance, year after year. One of the most thoroughly tested flooring products on the market, it has outstanding dimensional stability and unparalleled crush resistance.

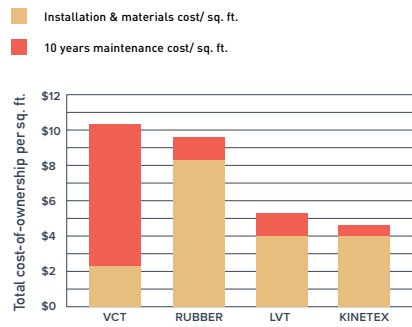


Kinetex has withstood more than 5 million foot traffic events.

2. MAINTENANCE

Tough to wear out, easy to maintain. With vacuuming and encapsulation cleaning, Kinetex looks like new, year after year. Thanks to a lightweight face construction, Kinetex retains less water than carpet and dries faster. It is easily sanitized and resists the most challenging staining agents.

Life Cycle Costs: INSTALLATION AND MAINTENANCE



3. MOISTURE TOLERANCE

The most common subfloor, concrete, can release excessive moisture and destroy floor covering systems—unless costly precautions are taken before installation. But moisture mitigation isn't necessary with Kinetex; its breathable nature allows moisture to pass through its backing, instead of trapping it underneath. Kinetex textile composite flooring will perform in elevated RH slabs up to 100%.

100% RH TOLERANCE

NO VAPOR BARRIER REQUIRED—regardless if the slab is new or old, regardless of hydrostatic pressure

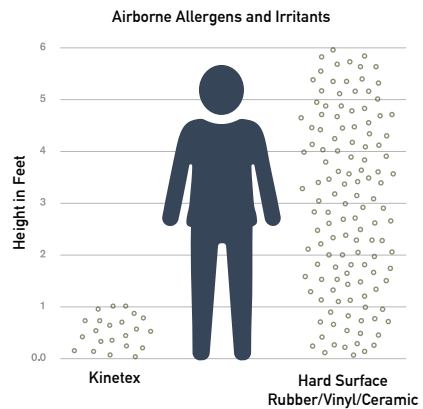
BREATHABLE No trapped moisture. 3rd party tested and verified.

Thousands of installations worldwide since 2012. NO MOISTURE-RELATED CLAIMS.

4. HEALTH

Kinetex minimizes air particulates that trigger allergies and cause infection. It easily surpasses California's 01350 requirements—the most popular U.S. standard for evaluating and restricting VOC emissions indoors.

Easy Breathing

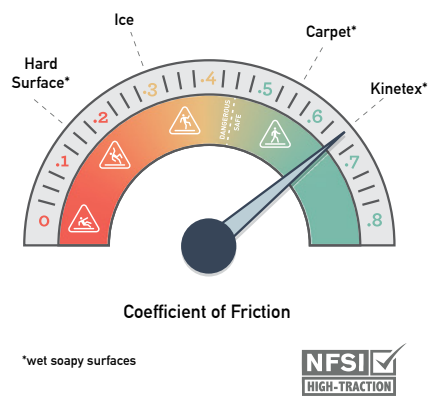


Foot Traffic Dust Emissions Test (ESO Fine Test Dust 12103-142)

5. SAFETY

Kinetex is the only wall-to-wall textile floor covering certified as High-Traction by the National Floor Safety Institute. Its innovative construction creates one of the most slip-resistant flooring surfaces ever tested—wet or dry—to prevent falls before they happen.

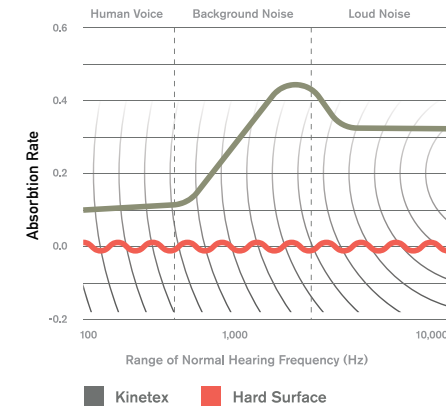
Gaining Traction



6. ACOUSTICS

Kinetex delivers unparalleled acoustic performance, with one of the highest Noise Reduction Coefficients (NRC) and Impact Insulation Classifications (IIC) ratings of any commercial flooring product.

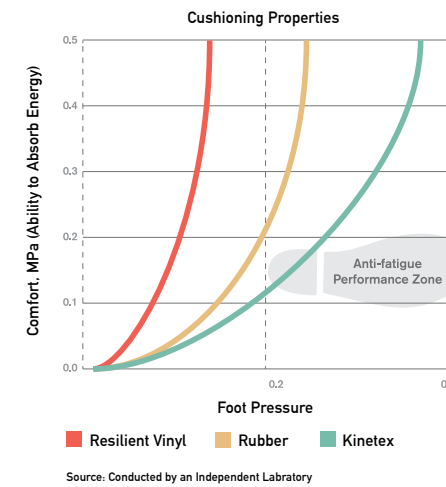
Keeping Quiet



7. COMFORT

Kinetex, a soft textile surface with a high-density backing, has exceptional anti-fatigue properties and minimal rolling resistance. Because it can absorb energy, Kinetex has the potential to reduce repetitive foot stress injuries and other injuries related to standing and frequent movement from place to place.

Step-by-Step Support

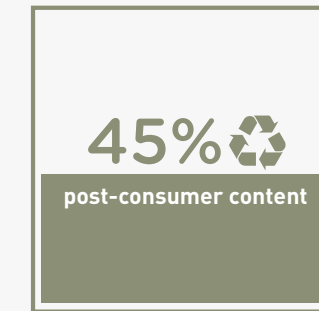


Source: Conducted by an Independent Laboratory

8. SUSTAINABILITY

Made with 45% post-consumer recycled content, each Kinetex tile contains the equivalent of 27 used water bottles. This dematerialized flooring product and its longer life mean that Kinetex has a much smaller environmental footprint than other commercial flooring options. Kinetex is NSF/ANSI-140 Platinum certified (the industry-leading standard for sustainability) and has a Red List Free DECLARE label. Furthermore, Kinetex has been verified as a Carbon Neutral product.

Second Chances



Each Kinetex tile contains the equivalent of 27 plastic water bottles.

KINETEX INSTALLATION

Although Kinetex is a modular tile, it does not install like traditional modular carpet. Installers should carefully read the full Kinetex installation instructions. Special attention should be applied until installers gain experience with module placement. Installers should perform site and material conditioning and surface preparation, and there should be no condensation or standing water at the time of installation. Kinetex material is lightweight and is easy to cut, which reduces installation time. Kinetex uses J+J Flooring's proven adhesive system with a lifetime performance warranty.

Kinetex Adhesive

Kinetex Adhesive is formulated for Kinetex textile composite flooring products and is built to bond the textile composite to the properly prepared substrates for the life of the installation. Products with Kinetex Adhesive will perform in elevated RH slabs up to 100%.

Please see the Kinetex installation instructions for full installation details.

TECHNOLOGIES

High-Def Color Technology

J+J Flooring achieves next-generation innovation with the development of High-Def Color Technology. This latest engineering capability provides Kinetex products with crisp color, vibrant patterns and dimensional design that rivals that of soft surface flooring.



WARRANTIES

We stand behind every aspect of Kinetex and extend certain lifetime warranties. Each warranty is covered for the useful life of the product, provided that installation and maintenance is in accordance with J+J Flooring’s Kinetex Installation instructions.

Wear Layer Warranties

Product Performance	Colorfastness to Light & Crocking	Stain Removal	Static Protection
Lifetime	Lifetime	Lifetime	Lifetime

Backing Warranties

Protection from Edge Ravel	Protection from Delamination Failure	Dimensional Stability
Lifetime	Lifetime	Lifetime



©2025 J+J Flooring Group, LLC - This unique design is protected under the U.S. Copyright Act of 1976. Any unauthorized copying or duplication of this design constitutes copyright infringement in violation of federal law. Due to the unique visual characteristics of modular carpets, pattern repeats and pattern run-off seams may appear more noticeable than in broadloom carpets. Such visual characteristics do not constitute a manufacturing defect, and as such, should be considered when selecting modular carpet and its installation.

These photographs are representations of the installation for this modular product. Your modular installation may look different than these photos depending upon individual tile placement, lighting, and overall space layout, including furnishings. Final tile placement and the resulting visual is thus the customer’s, and not J+J Flooring’s responsibility.

*NRC rating is a measure of the effectiveness of a material in absorbing sound. The higher the NRC rating, the greater the ability of the flooring product to absorb airborne noise. Independent laboratory testing of Kinetex has shown an average NRC rating of 0.30 (bare concrete flooring will typically provide a NRC Rating of 0.015).

**IIC is a rating of the insulation from impact noise. The higher the IIC rating, the greater the sound insulation. Independent laboratory testing of Kinetex has shown an average IIC Rating of .64 (bare concrete flooring will typically provide an IIC Rating of 34) NOTE: Test results and testing laboratory will vary, and the above information is not guaranteed.

STYLE	Analog 1821 modular	Analog Mono 1822 modular
WEAR LAYER	solution dyed polyester - applied pattern (produced with High-Def Color Technology™)	solution dyed polyester - applied pattern (produced with High-Def Color Technology™)
BACKING	polyester felt cushion	polyester felt cushion
TOTAL WEIGHT (nominal average)	4.5 oz - 5.2 oz/square foot	4.5 oz - 5.2 oz/square foot
TOTAL THICKNESS (nominal average)	0.205 inches	0.205 inches
DIMENSIONS	24 x 24 inch modules	24 x 24 inch modules
PACKAGING	18 modules per box – 72 square feet	18 modules per box – 72 square feet
ENVIRONMENTAL ATTRIBUTES		
CARBON FOOTPRINT	carbon neutral	carbon neutral
RED LIST FREE	DECLARE label	DECLARE label
RECYCLED CONTENT	45% (post consumer)	45% (post consumer)
LEED SCORECARD	IEQ 4.1 and IEQ 4.3	IEQ 4.1 and IEQ 4.3
NSF/ANSI 140 CERTIFICATION	platinum	platinum
TESTING		
FLOORING RADIANT PANEL	class 1	class 1
SMOKE DENSITY	less than 450 (flaming & non-flaming)	less than 450 (flaming & non-flaming)
ELECTROSTATIC PROPENSITY	less than 3.0 kv	less than 3.0 kv
COLORFASTNESS TO LIGHT	rating of 4.0 or greater	rating of 4.0 or greater
COLORFASTNESS TO CROCKING	rating of 4.0 or greater	rating of 4.0 or greater
WATER REPELLENCY	rating of 4.0 or greater	rating of 4.0 or greater
APPEARANCE RETENTION	4.0 or greater	4.0 or greater
SLIP RESISTANCE	Complies with ADA Guidelines for level surface NFSI Certified High-Traction	Complies with ADA Guidelines for level surface NFSI Certified High-Traction
THERMAL INSULATION	0.73	0.73
NOISE REDUCTION COEFFICIENT	NRC Rating: 0.30*	NRC Rating: 0.30*
IMPACT INSULATION CLASSIFICATION	IIC Rating: 64**	IIC Rating: 64**
STAIN RESISTANCE	resists most challenging stains	resists most challenging stains
INDOOR AIR QUALITY CERTIFICATION	CRI Green Label Plus™	CRI Green Label Plus™
ADHESIVE		
	Kinetex adhesive (full-spread pressure-sensitive)	Kinetex adhesive (full-spread pressure-sensitive)
INSTALLATION METHODS		
	brick 1/4 turn stair step	ashlar brick 1/4 turn stair step

kinetex

24" x 24" MODULAR



P.O. BOX 2207

DALTON, GA 30722

P 800 241 4586

F 706 275 4433

JJFLOORING.COM

JX3223M06

carpet | lvt | kinetex



FLOORING
A DIVISION OF ENGINEERED FLOORS