

MODULAR

QUICK SHIP OPTIONS

ARTISTIC ELEMENTS COLLECTION

Rhythm Balance



ARTISTIC ELEMENTS COLLECTION

Rhythm Balance



INSPIRATION

The visual tools that an artist needs to create a composition are line, shape, color, value, form, texture, and space. While exploring these principles, The Artistic Elements Collection was created – featuring two complementary products that are at once simple in their basic elements, yet layered with the subtle nuance and complexity.

Balance is a representation of symmetry – it's hand-sketched plaid is mirrored throughout the pattern, with slight variations of light and color. Rhythm captures the harmony of artistic elements through its subtle stria to create interest and consistency.

Artistic Elements Collection is available in a 24" x 24" carpet tile, in 8 coordinating colors with quick ship options.



[cover] RHYTHM // CINDER SMOKE // ashlar // BALANCE // CINDER SMOKE // ashlar
[above] RHYTHM // CINDER SMOKE // ashlar





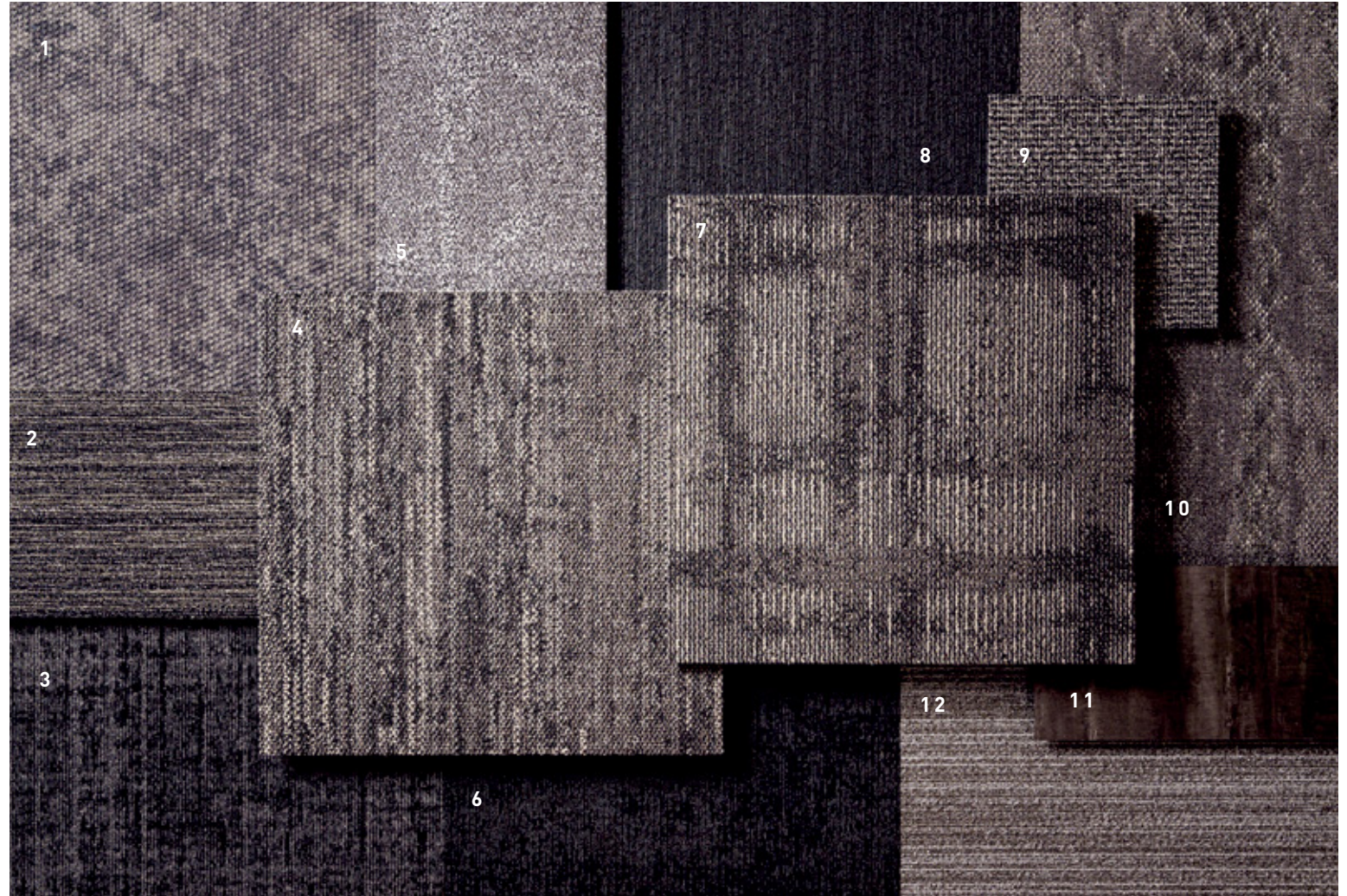
RHYTHM // BALTIC // ashlar



BALANCE // BALTIC // brick



BALANCE // BALTIC // brick



COORDINATES

Beyond the beauty of individual products, our flooring coordinates effortlessly across all of our product platforms - modular carpet tile, broadloom, LVT and Kinetex textile composite flooring. This offering enables you to blend a range of designs with tonal simplicity to create palettes that reflect the demands of each unique space.

- 1. URBAN AVENUE // 1843 // 2841 Metropolitan // Kinetex

- 2. CONVERGENT // 3925 + 7925 // 3069 Incorporate // Broadloom + Modular

- 3. ELEMENTAL // 7683 // 2640 Hardware // Modular

- 4. RHYTHM // 7502 // 3640 Nightfall // Modular

- 5. DAPPER // 7913 // 3423 Hem // Modular

- 6. CRAFTWORK // 6599 + 7099 // 2210 Blacksmith // Broadloom + Modular

- 7. BALANCE // 7503 // 3640 Nightfall // Modular

- 8. COLOR ZONE // 7479 // 3223 Black // Modular

- 9. STRUCTURE // 20100 // 1804 Truss // Broadloom

- 10. ORGANIC RAKU // 7062 // 3618 Pebble // Modular

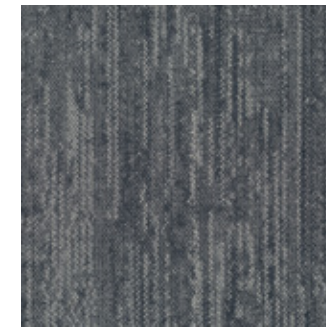
- 11. LEGEND // V5010 + V5009 // 1058 Fable // LVT

- 12. ZEPHYR // 7478 // 3364 Trade // Modular

[above] RHYTHM // NIGHTFALL // ashlar // BALANCE // NIGHTFALL // ashlar
 [back cover] RHYTHM // MARINE // ashlar // BALANCE // MARINE // ashlar



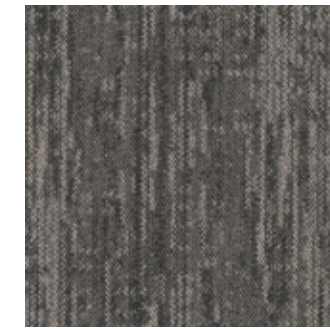
Rhythm 24"x24" MODULAR



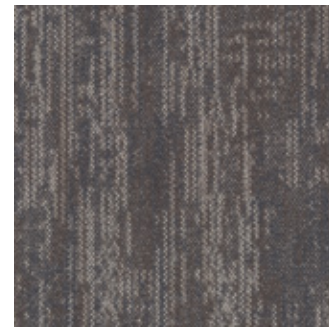
QUICK SHIP
COLOR 3633
 moonstone



COLOR 3634
 toasted almond



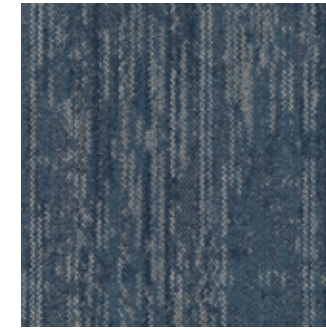
QUICK SHIP
COLOR 3635
 cinder smoke



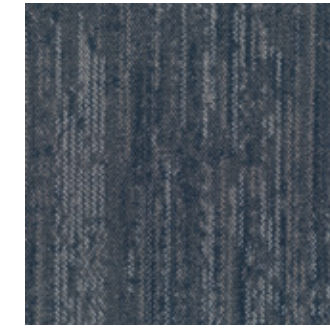
COLOR 3636
 sandalwood



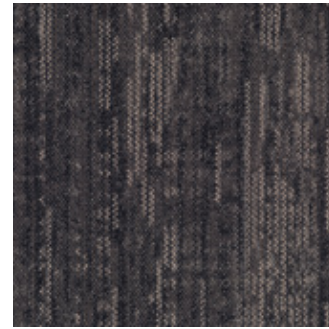
COLOR 3637
 marine



COLOR 3638
 baltic

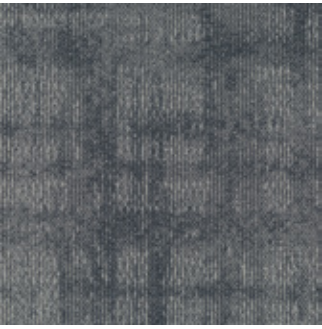


COLOR 3639
 inkwell

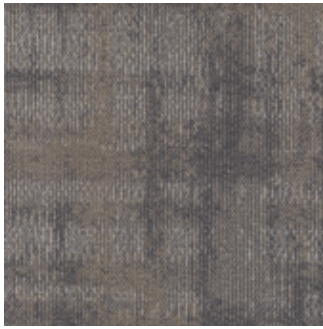


QUICK SHIP
COLOR 3640
 nightfall

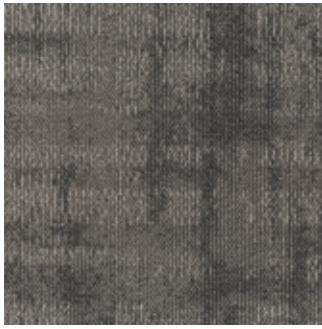
Balance 24"x24" MODULAR



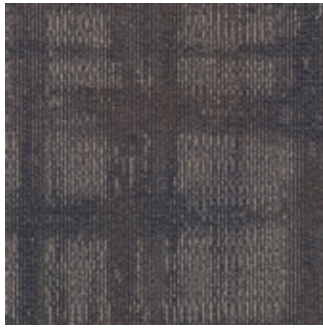
QUICK SHIP
COLOR 3633
moonstone



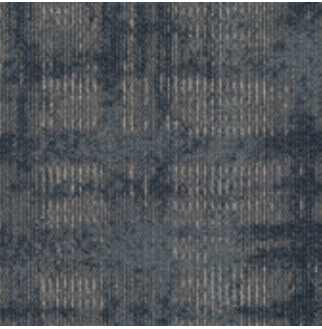
COLOR 3634
toasted almond



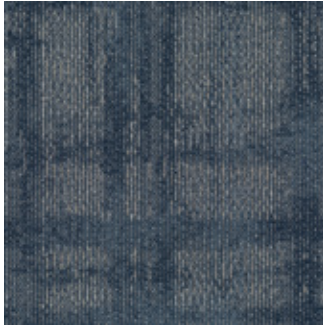
QUICK SHIP
COLOR 3635
cinder smoke



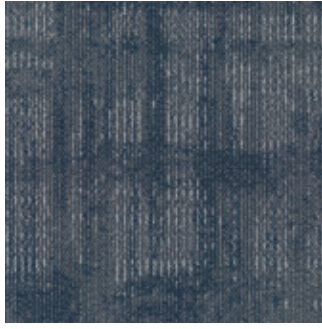
COLOR 3636
sandalwood



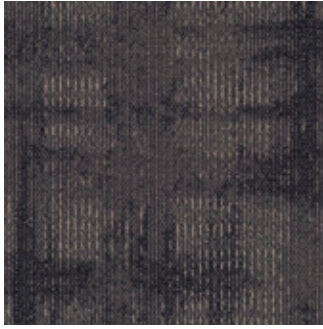
COLOR 3637
marine



COLOR 3638
baltic



COLOR 3639
inkwell



QUICK SHIP
COLOR 3640
nightfall



FIBER

Encore® SD Ultima® Nylon with recycled content is specifically engineered to maximize appearance retention with exceptional color, performance, sustainability, and practicality.

ADHESIVE

Commercialon® Premium Modular Adhesive

A high strength acrylic latex-based carpet adhesive specifically formulated for bonding modular PVC backed carpet to the floor. This premium adhesive is for use with all Nexus Modular Tile products. This adhesive is guaranteed for the lifetime of the installation when used in accordance with the J+J Flooring installation instructions. Commercialon® Premium Modular Adhesive meets the CRI Low-VOC Emission Criteria, CRI ID# PSA-425402. Commercialon® Premium Modular Adhesive is non toxic, has ultra-low odor and is antimicrobial in the dry state.

OPTIONAL:

Commercialon® High Moisture Adhesive TileTabs - High Tack Adhesive Tabs (modular only)

FIBER OPTION:

Encore® 100

The high recycled content incorporated into Encore 100 nylon provides a reduced environmental impact without compromising quality or color clarity.

- » 100% post-industrial (pre-consumer) recycled content
- » Full inclusion into the J&J Flooring Carpet Reclamation Program
- » Lifetime warranty for stain removal, colorfastness, wear and static
- » See sales rep for for availability and price

TECHNOLOGIES

ProTex® Anti-Soil Treatment

ProTex is a proprietary anti-soil treatment technology that is applied and bonded to the pile fiber to impede soiling and to improve cleanability. It is standard on all J+J Flooring products.

OPTIONAL:

ProSept® Antimicrobial
Sentir® Advanced Odor-Blocking Technology

MOISTURE

Are high levels of moisture in your concrete slab causing issues with your project's floor covering? We can help.

- » Nexus® Modular Carpet with TileTabs – 99% RH
- » Cost-efficient
- » Long-term performance
- » Straightforward, easy-to-understand warranty
- » Requires no special floor preparation

BACKINGS

Nexus® Modular products can be installed in a variety of ways and are performance engineered to be visually appealing. In addition, they are designed to accommodate your long-term flooring budget.

- » Manufactured in an ISO 14001 certified facility
- » Contains pre-consumer recycled content and contributes to LEED
- » Recyclable through the J+J Flooring's R4 Carpet Reclamation Program

STYLE

rhythm 7502 modular

balance 7503 modular

CONSTRUCTION

patterned loop

patterned loop

FIBER TYPE

Encore® SD Ultima® Nylon

Encore® SD Ultima® Nylon

FIBER OPTION

Encore® 100

Encore® 100

DYE METHOD

solution dyed

solution dyed

OUNCE WEIGHT

16.0 oz./sy (543 grams/m²)

16.0 oz./sy (543 grams/m²)

GAUGE

1/12 (4.72 rows/cm)

1/12 (4.72 rows/cm)

BACKING

Nexus® Modular

Nexus® Modular

SIZE

24" x 24" (61.0 cm X 61.0 cm)

24" x 24" (61.0 cm X 61.0 cm)

PATTERN REPEAT

n/a

n/a

TOTAL THICKNESS (nominal average)

0.187 inches (0.635 cm)

0.187 inches (0.635 cm)

SPECIAL TECHNOLOGY

ProTex® anti-soil treatment

ProTex® anti-soil treatment

OPTIONAL SPECIAL TECHNOLOGIES

ProSept® antimicrobial
Sentir® advanced odor blocking treatment

ProSept® antimicrobial
Sentir® advanced odor blocking treatment

PHYSICAL TESTING

flooring radiant panel (class 1)
pill test – (passes)
smoke density (less than 450 flaming)
static generation -(less than 3.5 kv)
ADA compliance (compliant for accessible routes)

flooring radiant panel (class 1)
pill test – (passes)
smoke density (less than 450 flaming)
static generation -(less than 3.5 kv)
ADA compliance (compliant for accessible routes)

FIBER WARRANTY

lifetime fiber performance for wear
lifetime fiber performance for static
lifetime stain removal
lifetime colorfastness to light and atmospheric contaminants

lifetime fiber performance for wear
lifetime fiber performance for static
lifetime stain removal
lifetime colorfastness to light and atmospheric contaminants

BACKING WARRANTY

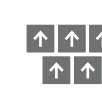
lifetime for tuft bind strength (edge ravel, yarn pulls, zippering)
lifetime against delamination
lifetime dimensional stability

lifetime for tuft bind strength (edge ravel, yarn pulls, zippering)
lifetime against delamination
lifetime dimensional stability

MODULAR INSTALLATION METHODS



ashlar



brick



quarter turn

STRAIGHT-FORWARD WARRANTIES

Warranty: Installed with TileTabs	Warranty: Installed with Commercialon® Premium Adhesive (non-prorated)	Warranty: Installed with any other adhesive	Max RH, pH: Installed without Commercialon® Premium Sealer	Max RH, pH: Installed with Commercialon® Premium Sealer
Lifetime	Lifetime	1 Year	90% RH, pH 9	99% RH, pH 11 (Tiletabs) 97% RH, pH 11 (Commercialon® Adhesive)



Made in the U.S.A.



Can be installed Glue-Free with TileTabs Nexus® Tile Connectors



©2024 J+J Flooring Group, LLC - This unique design is protected under the U.S. Copyright Act of 1976. Any unauthorized copying or duplication of this design constitutes copyright infringement in violation of federal law. Due to the unique visual characteristics of modular carpets, pattern repeats and pattern run-off seams may appear more noticeable than in broadloom carpets. Such visual characteristics do not constitute a manufacturing defect, and as such, should be considered when selecting modular carpet and its installation.

These photographs are representations of the installation for this modular product. Your modular installation may look different than these photos depending upon individual tile placement, lighting, and overall space layout, including furnishings. Final tile placement and the resulting visual is thus the customer's, and not J+J Flooring's responsibility.

MODULAR

QUICK SHIP OPTIONS



P.O. BOX 2207
DALTON, GA 30722
P 800 241 4586
F 706 275 4433
JJFLOORING.COM
MX61M03

carpet | lvt | kinetex

 **FLOORING**
A DIVISION OF ENGINEERED FLOORS