

MODULAR

THE GALLERY EDIT COLLECTION

# Curate Composition





THE GALLERY EDIT COLLECTION

# Curate Composition



## INSPIRATION

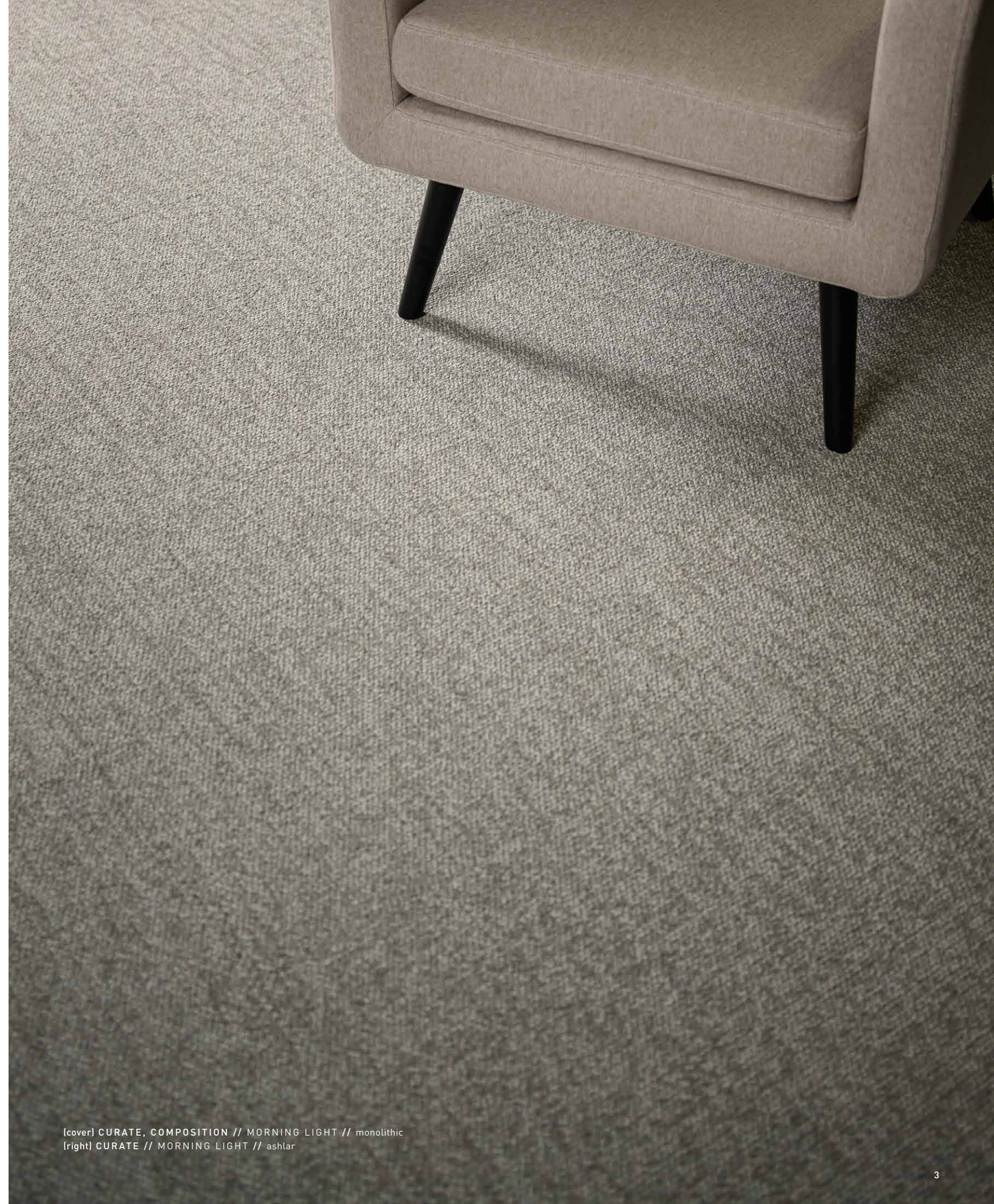
The Gallery Edit Collection is like an immersive gallery experience, walking through an art exhibit and encountering the dynamic and unique beauty in the details of each work of art. This experience inspired the Gallery Edit collection of products, each style is a tribute to a different art technique or period, from the soft, layered textures of Impressionism to the vibrant lines of Modernism.

**Curate** utilizes stippling and dabbing effects to create a beautifully textured product. Available in 24" x 24" tile. **Composition** emulates a dry brush technique that creates the look of a soft, textured finish. Available in 24" x 24" tile. **Artistry** emulates dramatic brushstrokes. The use of contrasting yarns provides a deep textural visual. Available in 18" x 36" tile. **Technique** mimics the fragmented depth and unique textural effects created with a palette knife. Beautiful, deconstructed shapes overlap to create an etched effect. Available in 18" x 36" tile.

Curate and Composition are available in 14 neutral colors, ranging from a high contrast black and white, to a light and soft combination of cream and silver.

Artistry and Technique are available in 14 warm and cool neutrals with some soft earth tone accents. (These two styles can be found in a separate portfolio titled Artistry/Technique)

The Gallery Edit Collection offers a sophisticated color palette and design that will enhance any commercial space.



[cover] CURATE, COMPOSITION // MORNING LIGHT // monolithic  
[right] CURATE // MORNING LIGHT // ashlar





CURATE // PALE ASH // monolithic





CURATE, COMPOSITION // PALE ASH // ashlar













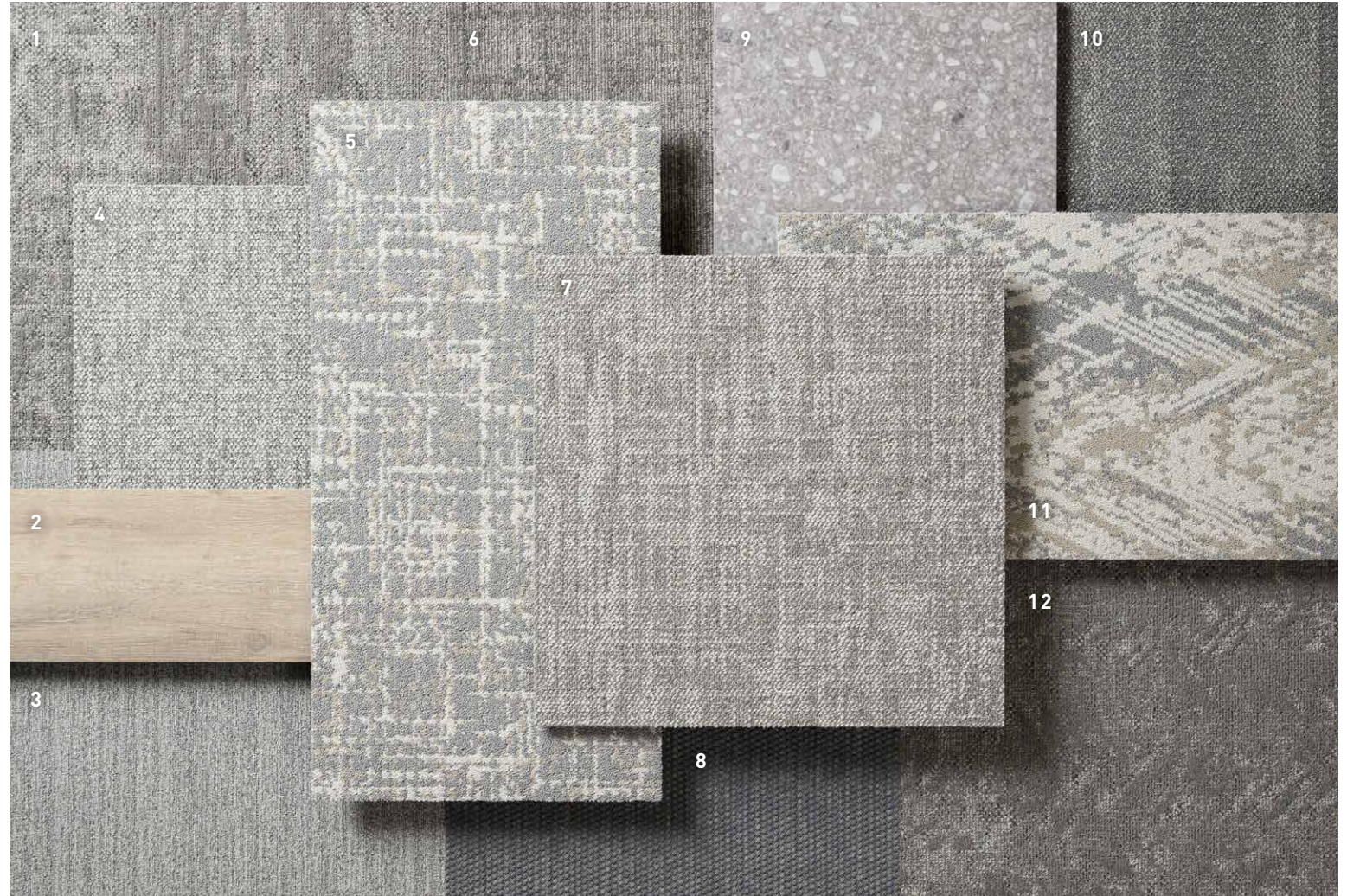
**COORDINATES**

Beyond the beauty of individual products, our flooring coordinates effortlessly across all of our product platforms - modular carpet tile, broadloom, LVT and Kinetex textile composite flooring. This offering enables you to blend a range of designs with tonal simplicity to create palettes that reflect the demands of each unique space.

- |   |   |
|---|---|
| 1. <b>QUILL</b> // 7801 // #3628 Truffle // Modular       | 7. <b>ELEMENTAL</b> // 7683 // #2640 Hardware // Modular                |
| 2. <b>ARTISTRY</b> // 7803 // #3674 Suede Moss // Modular | 8. <b>SIGNATURE II</b> // V5028 // #1060 Inheritance // LVT             |
| 3. <b>FRAMEWORK</b> // V5001 // #1014 Partition // LVT    | 9. <b>URBAN AVENUE</b> // 1843 // #2841 Metropolitan // Kinetex         |
| 4. <b>COLOR ZONE</b> // 7479 // #3222 Carbon // Modular   | 10. <b>TECHNIQUE</b> // 7804 // #3674 Suede Moss // Modular             |
| 5. <b>COMPOSITION</b> // 7507 // #3690 Brindle // Modular | 11. <b>VALLEY</b> // 6501 + 7501 // #3474 Canyon // Broadloom + Modular |
| 6. <b>CURATE</b> // 7508 // #3690 Brindle // Modular      | 12. <b>COLOR ZONE</b> // 7479 // #3373 Fern // Modular                  |

CURATE // BRINDLE // monolithic  
 ARTISTRY // SUEDE MOSS // monolithic





**COORDINATES**

Beyond the beauty of individual products, our flooring coordinates effortlessly across all of our product platforms - modular carpet tile, broadloom, LVT and Kinetex textile composite flooring. This offering enables you to blend a range of designs with tonal simplicity to create palettes that reflect the demands of each unique space.

- |   |   |
|---|---|
| 1. FRACTURED PLAID // 7587 // #2875 Eyelet // Modular | 7. COMPOSITION // 7507 // #3693 August Evening // Modular |
| 2. CLASSICS II // V5023 // #1089 Value // LVT         | 8. PROVISION // 1831 // #2279 Essential // Kinetex        |
| 3. COLOR ZONE // 7479 // #3221 Ash // Modular         | 9. COMPOSITE // V5041 + V5042 // #1115 Suitable // LVT    |
| 4. CURATE // 7508 // #3693 August Evening // Modular  | 10. FUNCTION // 7410 // #3398 Portico // Modular          |
| 5. TECHNIQUE // 7804 // #3679 Desert Mist // Modular  | 11. ARTISTRY // 7803 // #3679 Desert Mist // Modular      |
| 6. ELEMENTAL // 7683 // #2638 Steel // Modular        | 12. TWILL WEAVE // 7586 // #2875 Eyelet // Modular        |

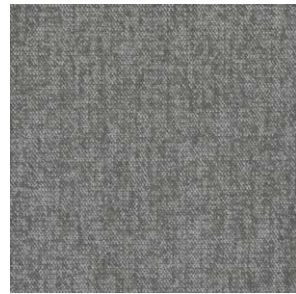




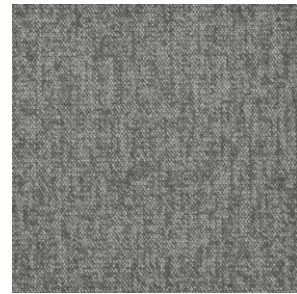
COMPOSITION // HORIZON // ashlar  
ARTISTRY // SALTY BREEZE // ashlar



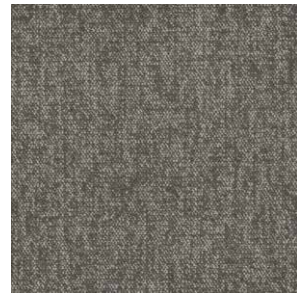
# Curate 24" X 24" MODULAR



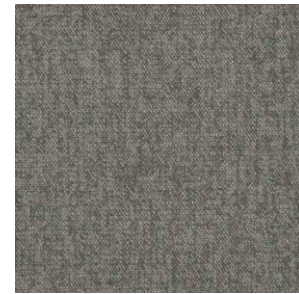
COLOR 3693  
august evening



COLOR 3695  
nordic



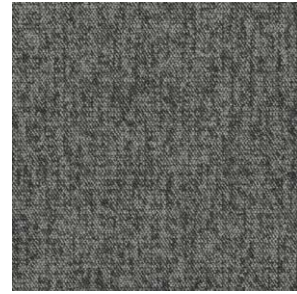
COLOR 3691  
soft adobe



COLOR 3689  
driftwood



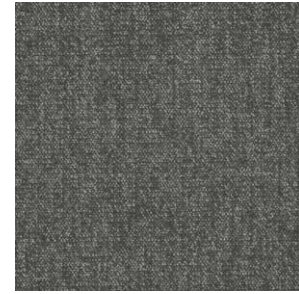
COLOR 3686  
tumbleweed



COLOR 3690  
brindle



COLOR 3688  
pale ash



COLOR 3696  
river rock



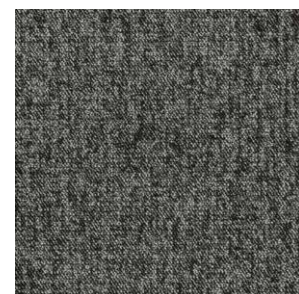
COLOR 3698  
star dust



COLOR 3697  
deep shadow



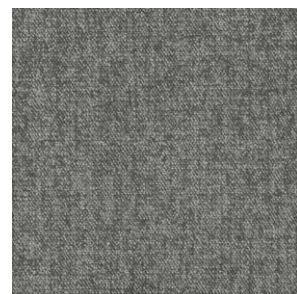
COLOR 3692  
hearthstone



COLOR 3685  
milky way



COLOR 3687  
morning light

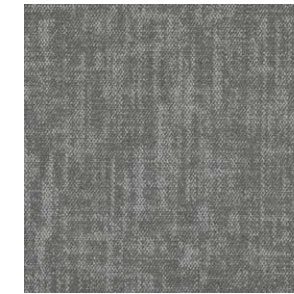


COLOR 3694  
horizon

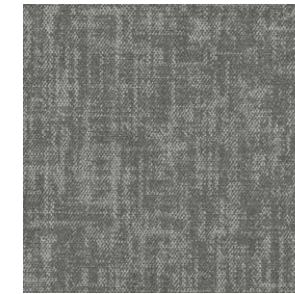




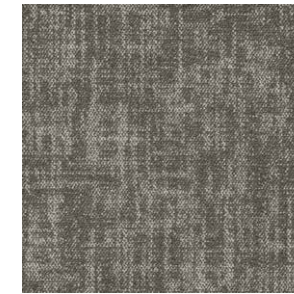
# Composition 24" X 24" MODULAR



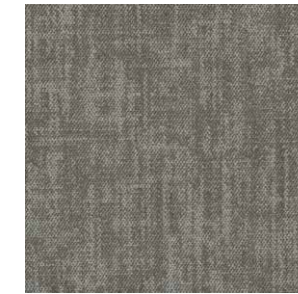
COLOR 3693  
august evening



COLOR 3695  
nordic



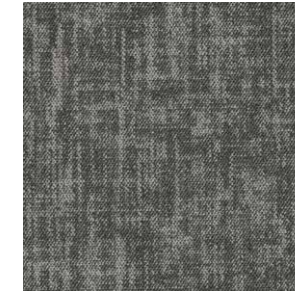
COLOR 3691  
soft adobe



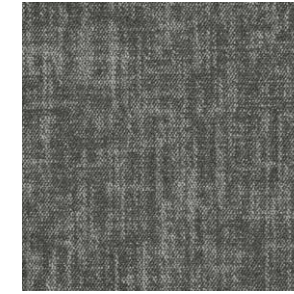
COLOR 3689  
driftwood



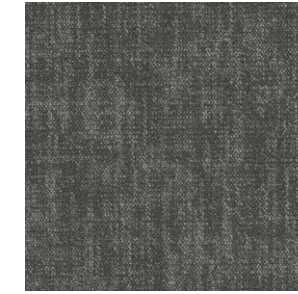
COLOR 3686  
tumbleweed



COLOR 3690  
brindle



COLOR 3688  
pale ash



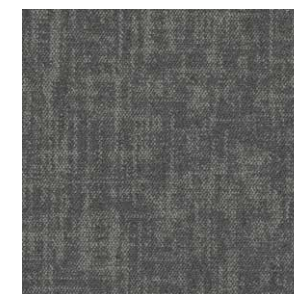
COLOR 3696  
river rock



COLOR 3698  
star dust



COLOR 3697  
deep shadow



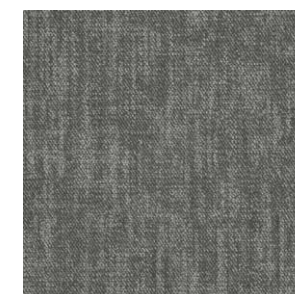
COLOR 3692  
hearthstone



COLOR 3685  
milky way



COLOR 3687  
morning light



COLOR 3694  
horizon



FIBER

**Encore® SD Ultima® Nylon**

(with recycled content) is specifically engineered to maximize appearance retention with exceptional color, performance, sustainability, and practicality.

FIBER OPTION

**Encore® 100**

The high recycled content incorporated into Encore 100 nylon provides a reduced environmental impact without compromising quality or color clarity.

- » 100% post-industrial (pre-consumer) recycled content
- » Full inclusion into the J&J Flooring Reclamation Program
- » Lifetime warranty for stain removal, colorfastness, wear and static
- » See sales rep for for availability and price

MOISTURE

Are high levels of moisture in your concrete slab causing issues with your project’s floor covering? We can help.

- » Nexus® Modular Carpet with TileTabs – 99% RH
- » Cost-efficient
- » Long-term performance
- » Straightforward, easy-to-understand warranty
- » Requires no special floor preparation

STANDARD BACKING

**Nexus® Modular** products can be installed in a variety of ways and are performance engineered to be visually appealing. In addition, they are designed to accommodate your long-term flooring budget.

- » Manufactured in an ISO 14001 certified facility
- » Contains pre-consumer recycled content and contributes to LEED and other sustainable building standards
- » Eligible for landfill diversion through the J+J Flooring Reclamation Program

OPTIONAL BACKING:

**Advance Modular Carpet Backing™** is engineered to provide outstanding performance, protection and stability that is required of modular carpet systems.

- » PVC-Free
- » Contains recycled content and contributes to LEED
- » Eligible for landfill diversion through the J+J Flooring Reclamation Program

OTHER BACKING OPTIONS:

- Nexus® Cushion**
- Nexus® FC Cushion**



Scan QR Code for backing details

TECHNOLOGIES

**ProTex® Anti-Soil Treatment**

ProTex is a proprietary anti-soil treatment technology that is applied and bonded to the pile fiber to impede soiling and to improve cleanability. It is standard on all J+J Flooring products.

OPTIONAL:

- ProSept® Antimicrobial**
- Sentir® Advanced Odor-Blocking Technology**

ADHESIVE

**Commercialon® Premium Modular Adhesive**

A high strength acrylic latex-based carpet adhesive specifically formulated for bonding modular PVC backed carpet to the floor. This premium adhesive is for use with all Nexus Modular Tile products. This adhesive is guaranteed for the life of the installation when used in accordance with the J+J Flooring Carpet Installation Handbook. Commercialon Premium Modular Adhesive meets the CRI Low-VOC Emission Criteria, CRI ID# PSA-425402. Commercialon Premium Modular Adhesive is non toxic, has ultra-low odor and is antimicrobial in the dry state.

OPTIONAL:

- TileTabs - High Tack Adhesive Tabs** (modular only)

STYLE

curate 7508 modular

composition 7507 modular

CONSTRUCTION

textured loop

textured loop

FIBER TYPE

100% Encore® SD Ultima® Nylon

100% Encore® SD Ultima® Nylon

FIBER OPTION

Encore® 100

Encore® 100

DYE METHOD

solution dyed

solution dyed

OUNCE WEIGHT

23.0 oz./sy (780 grams/m<sup>2</sup>)

23.0 oz./sy (780 grams/m<sup>2</sup>)

GAUGE

1/12 (4.72 rows/cm)

1/12 (4.72 rows/cm)

STANDARD BACKING

Nexus® Modular

Nexus® Modular

OPTIONAL BACKING

Advance Modular

Advance Modular

SIZE

24" x 24" (61.0 cm x 61.0 cm)

24" x 24" (61.0 cm x 61.0 cm)

PATTERN REPEAT

n/a

n/a

TOTAL THICKNESS (nominal average)

0.250 inches (0.635 cm)

0.250 inches (0.635 cm)

SPECIAL TECHNOLOGY

ProTex® anti-soil treatment

ProTex® anti-soil treatment

OPTIONAL SPECIAL TECHNOLOGIES

ProSept® antimicrobial  
Sentir® advanced odor blocking treatment

ProSept® antimicrobial  
Sentir® advanced odor blocking treatment

PHYSICAL TESTING

flooring radiant panel (class 1)

flooring radiant panel (class 1)

pill test – (passes)

pill test – (passes)

smoke density (less than 450 flaming)

smoke density (less than 450 flaming)

static generation – (less than 3.5 kv)

static generation – (less than 3.5 kv)

ADA compliance (compliant for accessible routes)

ADA compliance (compliant for accessible routes)

FIBER WARRANTY

lifetime fiber performance for wear

lifetime fiber performance for wear

lifetime fiber performance for static

lifetime fiber performance for static

lifetime stain removal

lifetime stain removal

lifetime colorfastness to light and atmospheric contaminants

lifetime colorfastness to light and atmospheric contaminants

BACKING WARRANTY

lifetime for tuft bind strength (edge ravel, yarn pulls, zippering)

lifetime for tuft bind strength (edge ravel, yarn pulls, zippering)

lifetime against delamination

lifetime against delamination

lifetime dimensional stability

lifetime dimensional stability

MODULAR INSTALLATION METHODS



ashlar



brick



monolithic



quarter turn

STRAIGHT-FORWARD WARRANTIES

Warranty: Installed with TileTabs	Warranty: Installed with Commercialon® Premium Adhesive (non-prorated)	Warranty: Installed with any other adhesive	Max RH, pH: Installed without Commercialon® Premium Sealer	Max RH, pH: Installed with Commercialon® Premium Sealer
Lifetime	Lifetime	1 Year	90% RH, pH 9	99% RH, pH 11 (Tiletabs)

©2024 J+J Flooring Group, LLC - This unique design is protected under the U.S. Copyright Act of 1976. Any unauthorized copying or duplication of this design constitutes copyright infringement in violation of federal law. Due to the unique visual characteristics of modular carpets, pattern repeats and pattern run-off seams may appear more noticeable than in broadloom carpets. Such visual characteristics do not constitute a manufacturing defect, and as such, should be considered when selecting modular carpet and its installation.

These photographs are representations of the installation for this modular product. Your modular installation may look different than these photos depending upon individual tile placement, lighting, and overall space layout, including furnishings. Final tile placement and the resulting visual is thus the customer's, and not J+J Flooring's responsibility.



Made in the U.S.A.



Can be installed Glue-Free with TileTabs Nexus® Tile Connectors







P.O. BOX 2207

DALTON, GA 30722

P 800 241 4586

F 706 275 4433

JJFLOORING.COM

OX3524M10

carpet | lvt | kinetex