

BROADLOOM

QUICK SHIP

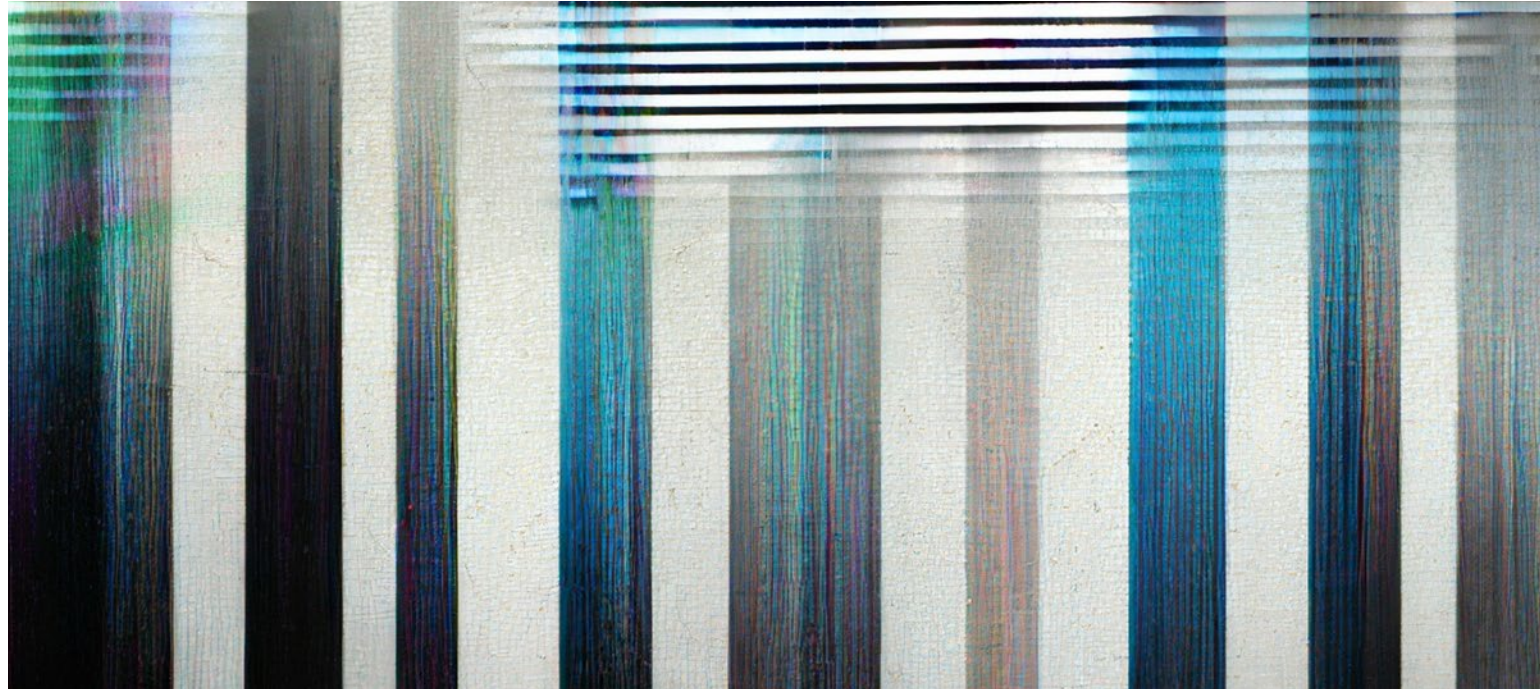
INTRINSIC BROADLOOM COLLECTION

# Intrinsic Assent Verify



INTRINSIC BROADLOOM COLLECTION

# Intrinsic Assent Verify

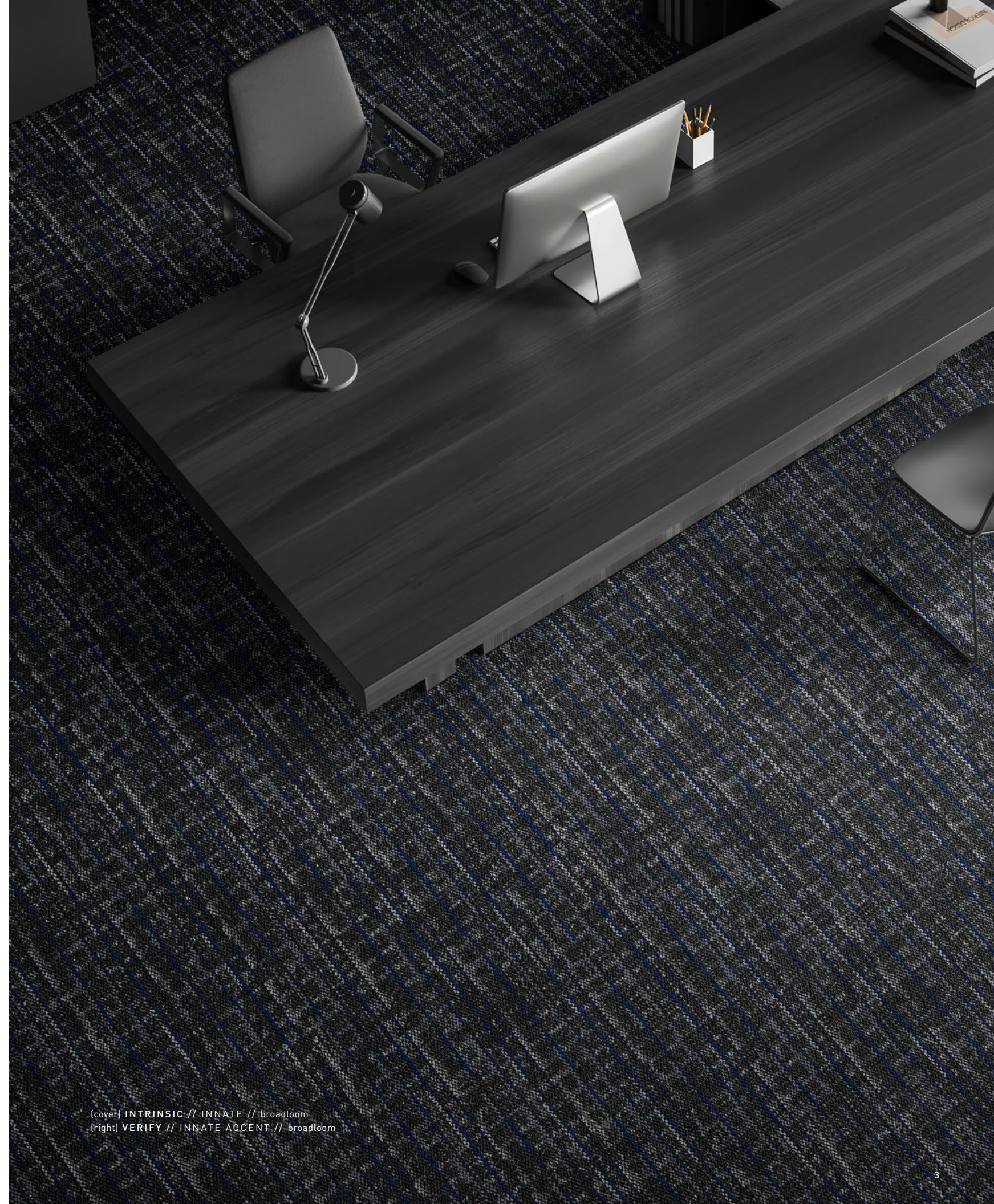


## INSPIRATION

Juxtaposing clean lines with geometric shapes, The Intrinsic Broadloom Collection showcases modern design with an organic flair.

Playing off its modular counterpart, **Intrinsic** scatters softly blurred geometrics over a neutral linear background. **Assent** is a smaller-scale, free-flowing abstract that will provide a subdued canvas for the floor. **Verify** is a beautiful interconnection of softly textured striations, layered with hints of bolder color.

The three styles within the Intrinsic Broadloom Collection feature eight warm and cool neutrals that flawlessly coordinate across our product portfolio.



(cover) INTRINSIC // INNATE // broadloom  
(right) VERIFY // INNATE ACCENT // broadloom

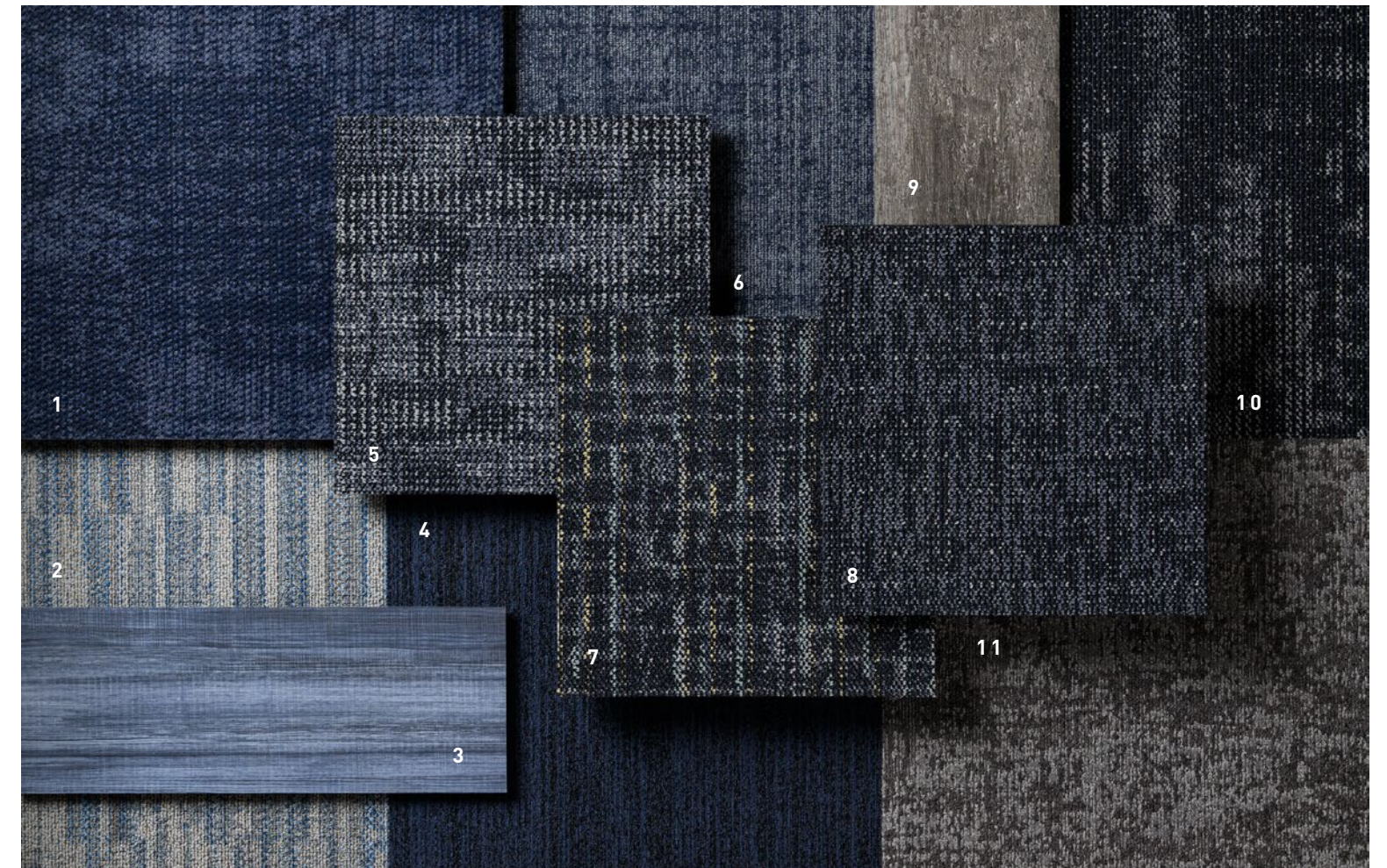




INTRINSIC // ESSENTIAL // broadloom



VERIFY // ESSENTIAL ACCENT // broadloom



## COORDINATES

Beyond the beauty of individual products, our flooring coordinates effortlessly across all of our product platforms - modular carpet tile, broadloom, LVT and Kinetex textile composite flooring. This offering enables you to blend a range of designs with tonal simplicity to create palettes that reflect the demands of each unique space.

1. NETWORK // 1842 // 2917 Fabric // Kinetex

2. ANALYTIC FORM // 7633 // 3599 Cool Blue // modular

3. MAKE YOUR MARK // V5012 + V5013 // 1068 Denim // LVT

4. COLOR ZONE // 7479 // 3372 Navy // modular

5. INTRINSIC // 6096 + 7096 // 2726 Inherent // broadloom + modular

6. ELEMENTAL // 7683 // 2629 Beam // modular

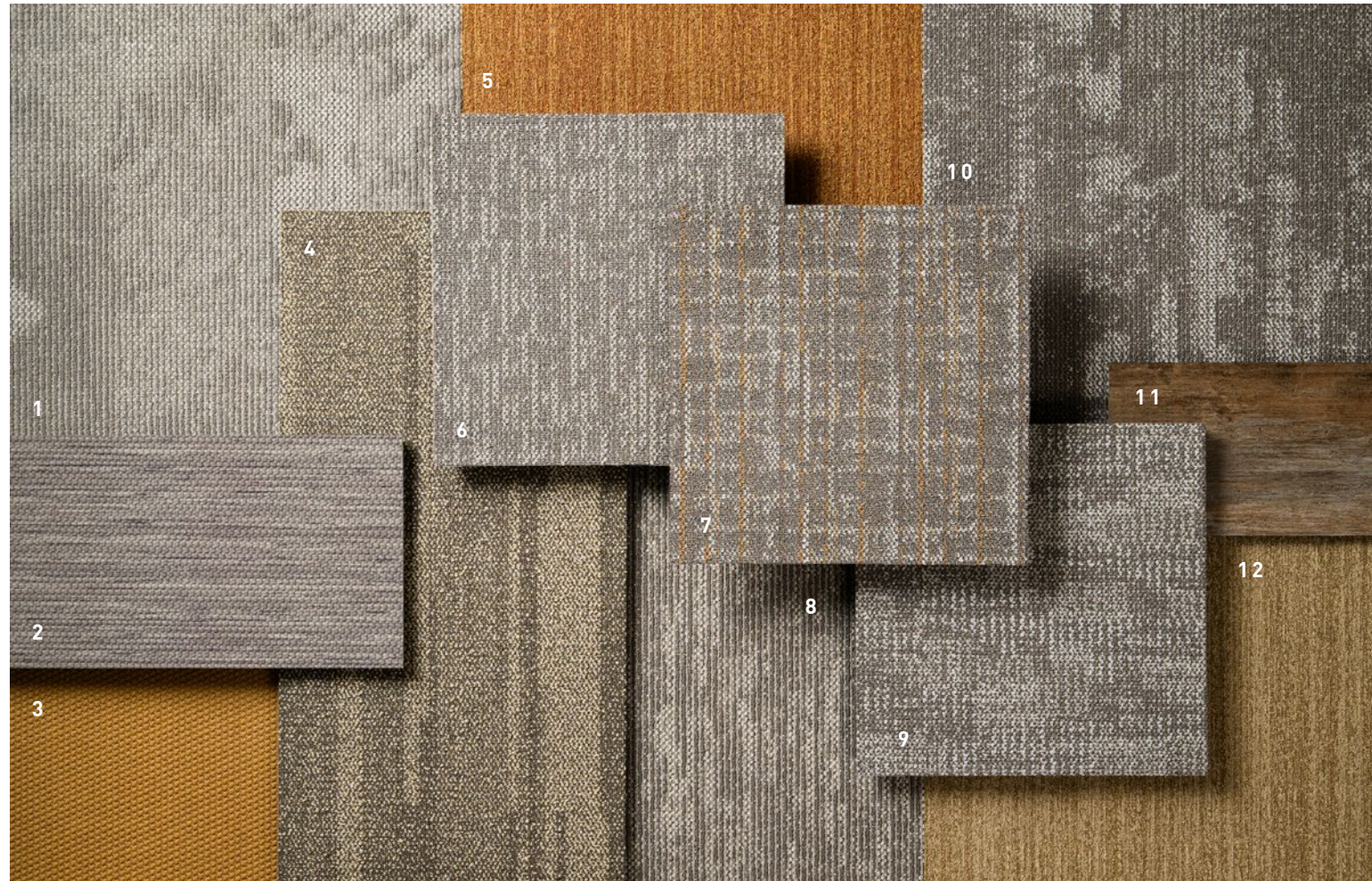
7. VERIFY // 6097 // 3569 Inherent Accent // broadloom

8. ASSENT // 6095 // 2726 Inherent // broadloom

9. POWER PLAY // V5019 + V5020 // 1081 Advantage // LVT

10. INTEGRAL // 7310 // 2726 Inherent // modular

11. CRAFTWORK // 6599 + 7099 // 2207 Tailor // broadloom + modular



## COORDINATES

Beyond the beauty of individual products, our flooring coordinates effortlessly across all of our product platforms - modular carpet tile, broadloom, LVT and Kinetex textile composite flooring. This offering enables you to blend a range of designs with tonal simplicity to create palettes that reflect the demands of each unique space.

1. MESA // 7500 // 3476 Desert // modular

2. AGAINST THE GRAIN // 1840 // 2825 Millet // kinetex

3. PROPEL II // 1817 // 2368 March // kinetex

4. FUNCTION // 7410 // 1800 Camber // modular

5. COLOR ZONE // 7479 // 3381 Copper // modular

6. ASSENT // 6095 // 2719 Essential // broadloom

7. VERIFY // 6097 // 3563 Essential Accent // broadloom

8. VALLEY // 6501 + 7501 // 3476 Desert // broadloom + modular

9. INTRINSIC // 6096 + 7096 // 2719 Essential // broadloom + modular

10. INTEGRAL // 7310 // 2719 Essential // modular

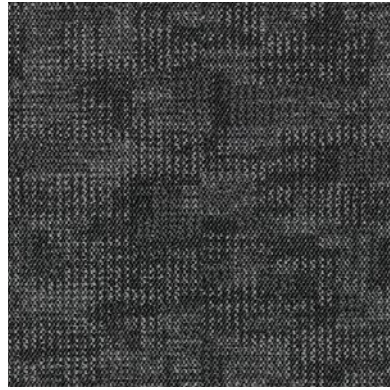
11. POWER PLAY // V5019 + V5020 // 1085 Dominance // LVT

12. COLOR ZONE // 7479 // 3378 Brass // modular

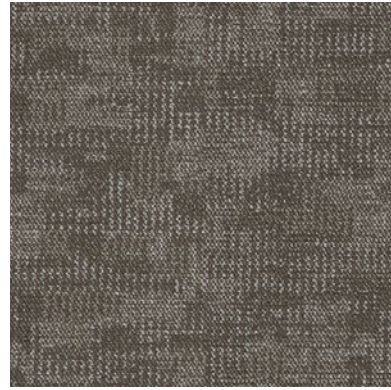


INTRINSIC // ESSENTIAL // broadloom // INTEGRAL // ESSENTIAL // monolithic

# Intrinsic BROADLOOM



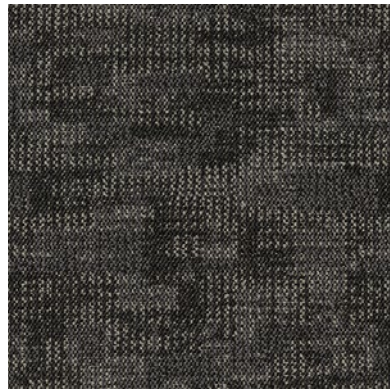
**QUICK SHIP**  
COLOR 2722  
innate



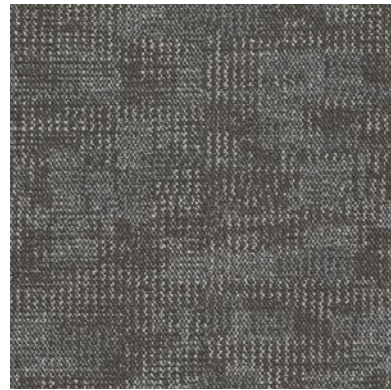
**QUICK SHIP**  
COLOR 2719  
essential



**QUICK SHIP**  
COLOR 2717  
authentic



**QUICK SHIP**  
COLOR 2723  
key



**QUICK SHIP**  
COLOR 2718  
central



**QUICK SHIP**  
COLOR 2720  
fundamental



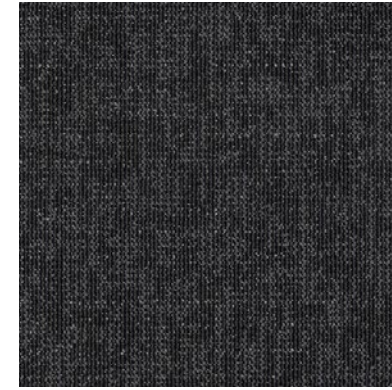
**QUICK SHIP**  
COLOR 2728  
true



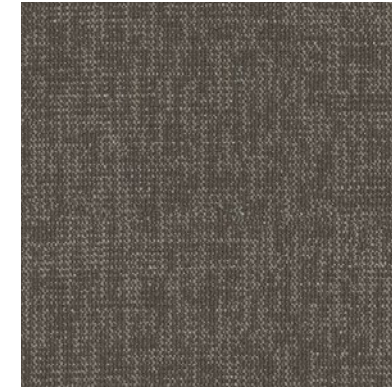
**QUICK SHIP**  
COLOR 2726  
inherent

**ALL COLORS ARE AVAILABLE AS QUICK SHIP.** Orders up to 1,500 square yards (13,500 sq. ft.) ship within 10 days.

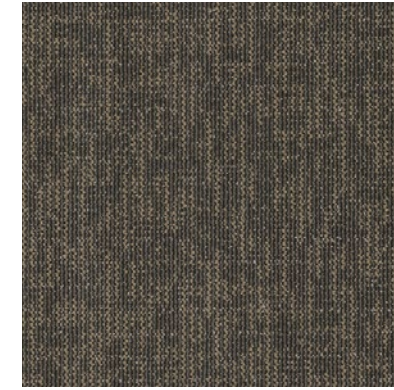
# Assent BROADLOOM



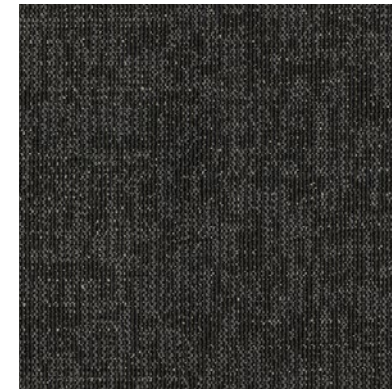
**QUICK SHIP**  
COLOR 2722  
innate



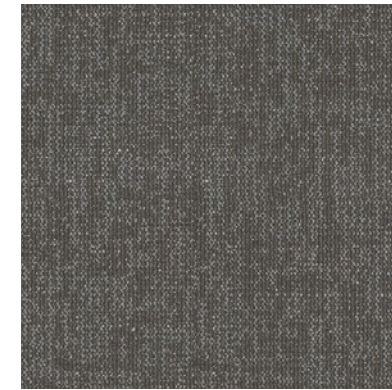
**QUICK SHIP**  
COLOR 2719  
essential



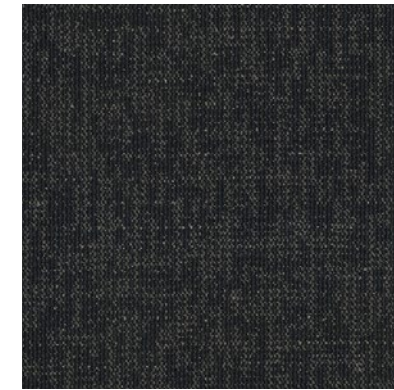
**QUICK SHIP**  
COLOR 2717  
authentic



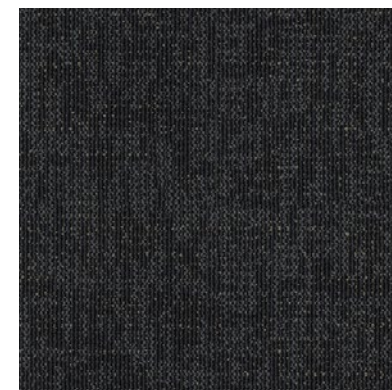
**QUICK SHIP**  
COLOR 2723  
key



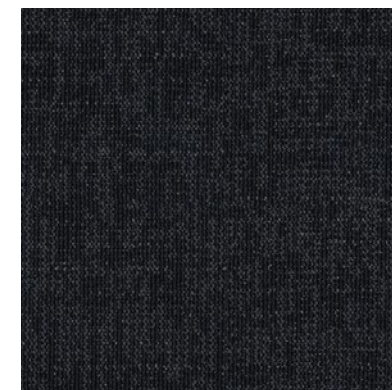
**QUICK SHIP**  
COLOR 2718  
central



**QUICK SHIP**  
COLOR 2720  
fundamental



**QUICK SHIP**  
COLOR 2728  
true



**QUICK SHIP**  
COLOR 2726  
inherent

**ALL COLORS ARE AVAILABLE AS QUICK SHIP.** Orders up to 1,500 square yards (13,500 sq. ft.) ship within 10 days.



# Verify BROADLOOM



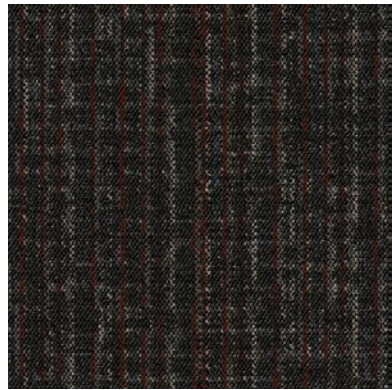
**QUICK SHIP**  
COLOR 3570  
innate accent



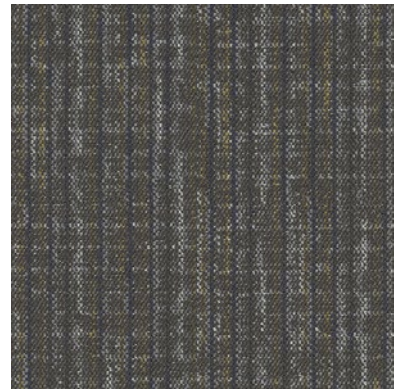
**QUICK SHIP**  
COLOR 3563  
essential accent



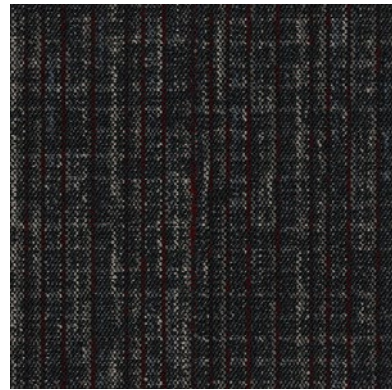
**QUICK SHIP**  
COLOR 3564  
authentic accent



**QUICK SHIP**  
COLOR 3565  
key accent



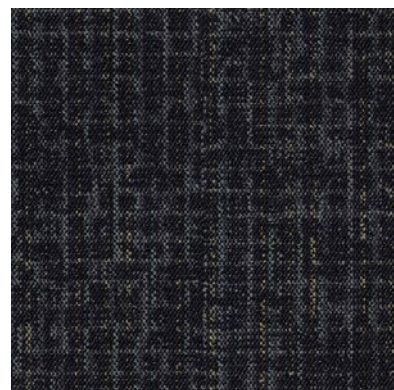
**QUICK SHIP**  
COLOR 3566  
central accent



**QUICK SHIP**  
COLOR 3567  
fundamental accent

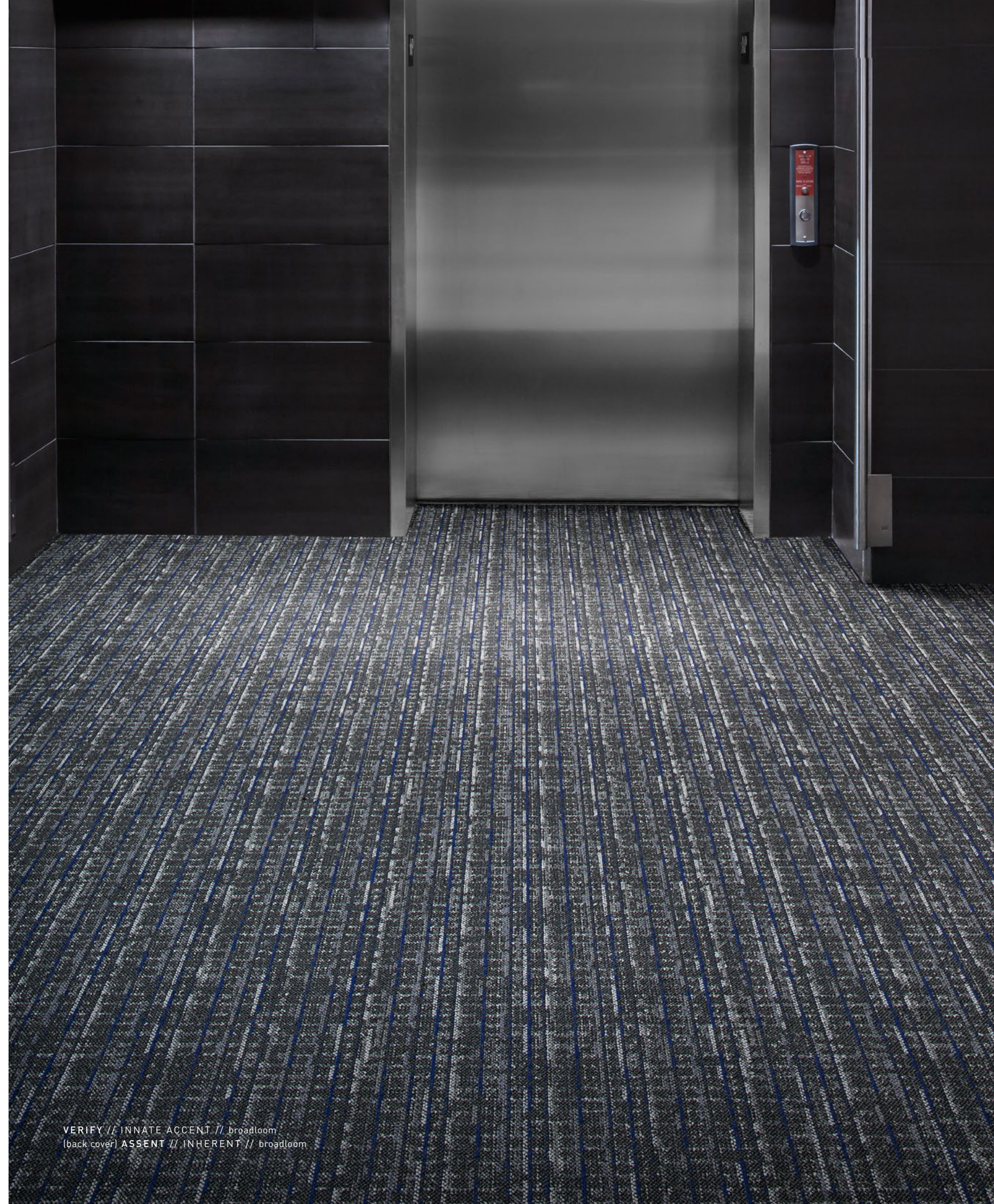


**QUICK SHIP**  
COLOR 3568  
true accent



**QUICK SHIP**  
COLOR 3569  
inherent accent

**ALL COLORS ARE AVAILABLE AS QUICK SHIP.** Orders up to 1,500 square yards (13,500 sq. ft.) ship within 10 days.



VERIFY // INNATE ACCENT // broadloom  
(back cover) ASSENT // INHERENT // broadloom

FIBER

**Encore® SD Ultima® Nylon** (with recycled content) is specifically engineered to maximize appearance retention with exceptional color, performance, sustainability and practicality.

FIBER OPTION:

**Encore® 100**

The high recycled content incorporated into Encore 100 nylon provides a reduced environmental impact without compromising quality or color clarity.

- » 100% post-industrial (pre-consumer) recycled content
- » Full inclusion into the J&J Flooring Carpet Reclamation Program
- » Lifetime warranty for stain removal, colorfastness, wear and static
- » See sales rep for for availability and price

BACKINGS

**PremierBac® Plus** is standard on broadloom products and provides superior construction to ensure solid dimensional stability for broadloom carpets.

TECHNOLOGIES

**ProTex® Anti-Soil Treatment**

ProTex is a proprietary anti-soil treatment technology that is applied and bonded to the pile fiber to impede soiling and to improve cleanability. It is standard on all J+J Flooring products.

OPTIONAL:

**ProSept® Antimicrobial**

**Sentir® Advanced Odor-Blocking Technology**

ADHESIVE

**Commercial® Premium Carpet Adhesive**

is formulated for the most demanding interior carpet installations. It forms a powerful bond with stiff and heavy backed commercial carpets directly over approved substrates. It is quick setting, features antimicrobial protection and can be removed easily. This solvent free adhesive is also low in odor, meeting the low VOC emission criteria of the CRI Green Label Plus Indoor Air Quality. Commercial Premium Adhesive is for use with broadloom PremierBac Plus, TitanBac® Plus and Endure Plus backings systems

STYLE	Intrinsic 6096 broadloom	Assent 6095 broadloom	Verify 6097 broadloom
CONSTRUCTION	patterned loop	patterned loop	patterned loop
FIBER TYPE	100% Encore® SD Ultima® Nylon	100% Encore® SD Ultima® Nylon	100% Encore® SD Ultima® Nylon
FIBER OPTION	Encore® 100	Encore® 100	Encore® 100
DYE METHOD	solution dyed	solution dyed	solution dyed
OUNCE WEIGHT	15.0 oz./sy (509 grams/m <sup>2</sup> )	15.0 oz./sy (509 grams/m <sup>2</sup> )	15.0 oz./sy (509 grams/m <sup>2</sup> )
GAUGE	1/12 (4.72 rows/cm)	1/12 (4.72 rows/cm)	1/12 (4.72 rows/cm)
BACKING	PremierBac® Plus	PremierBac® Plus	PremierBac® Plus
SIZE	12 feet (3.66 M)	12 feet (3.66 M)	12 feet (3.66 M)
PATTERN REPEAT	72" x 24" (183.0 cm x 61.0 cm)	72" x 24" (183.0 cm x 61.0 cm)	24" x 24" (61.0 cm x 61.0 cm)
TOTAL THICKNESS (nominal average)	0.25 inches (0.635 cm)	0.25 inches (0.635 cm)	0.25 inches (0.635 cm)
SPECIAL TECHNOLOGY	ProTex® anti-soil treatment	ProTex® anti-soil treatment	ProTex® anti-soil treatment
OPTIONAL SPECIAL TECHNOLOGIES	ProSept® antimicrobial Sentir® advanced odor blocking treatment	ProSept® antimicrobial Sentir® advanced odor blocking treatment	ProSept® antimicrobial Sentir® advanced odor blocking treatment
PHYSICAL TESTING	flooring radiant panel (class 1) pill test – (passes) smoke density (less than 450 flaming) static generation – (less than 3.5 kv) ADA compliance (compliant for accessible routes)	flooring radiant panel (class 1) pill test – (passes) smoke density (less than 450 flaming) static generation – (less than 3.5 kv) ADA compliance (compliant for accessible routes)	flooring radiant panel (class 1) pill test – (passes) smoke density (less than 450 flaming) static generation – (less than 3.5 kv) ADA compliance (compliant for accessible routes)
FIBER WARRANTY	lifetime fiber performance for wear lifetime fiber performance for static lifetime stain removal lifetime colorfastness to light and atmospheric contaminants	lifetime fiber performance for wear lifetime fiber performance for static lifetime stain removal lifetime colorfastness to light and atmospheric contaminants	lifetime fiber performance for wear lifetime fiber performance for static lifetime stain removal lifetime colorfastness to light and atmospheric contaminants
BACKING WARRANTY	10 year for tuft bind strength (edge ravel, yarn pulls, zippering) 10 year against delamination	10 year for tuft bind strength (edge ravel, yarn pulls, zippering) 10 year against delamination	10 year for tuft bind strength (edge ravel, yarn pulls, zippering) 10 year against delamination



Made in the U.S.A.



©2024 J+J Flooring Group, LLC - This unique design is protected under the U.S. Copyright Act of 1976. Any unauthorized copying or duplication of this design constitutes copyright infringement in violation of federal law. Due to the unique visual characteristics of modular carpets, pattern repeats and pattern run-off seams may appear more noticeable than in broadloom carpets. Such visual characteristics do not constitute a manufacturing defect, and as such, should be considered when selecting modular carpet and its installation.

These photographs are representations of the installation for this modular product. Your modular installation may look different than these photos depending upon individual tile placement, lighting, and overall space layout, including furnishings. Final tile placement and the resulting visual is thus the customer's, and not J+J Flooring's responsibility.

BROADLOOM

QUICK SHIP



P.O. BOX 2207

DALTON, GA 30722

P 800 241 4586

F 706 275 4433

JJFLOORING.COM

MX7423M05

carpet | lvt | kinetex



FLOORING

A DIVISION OF ENGINEERED FLOORS