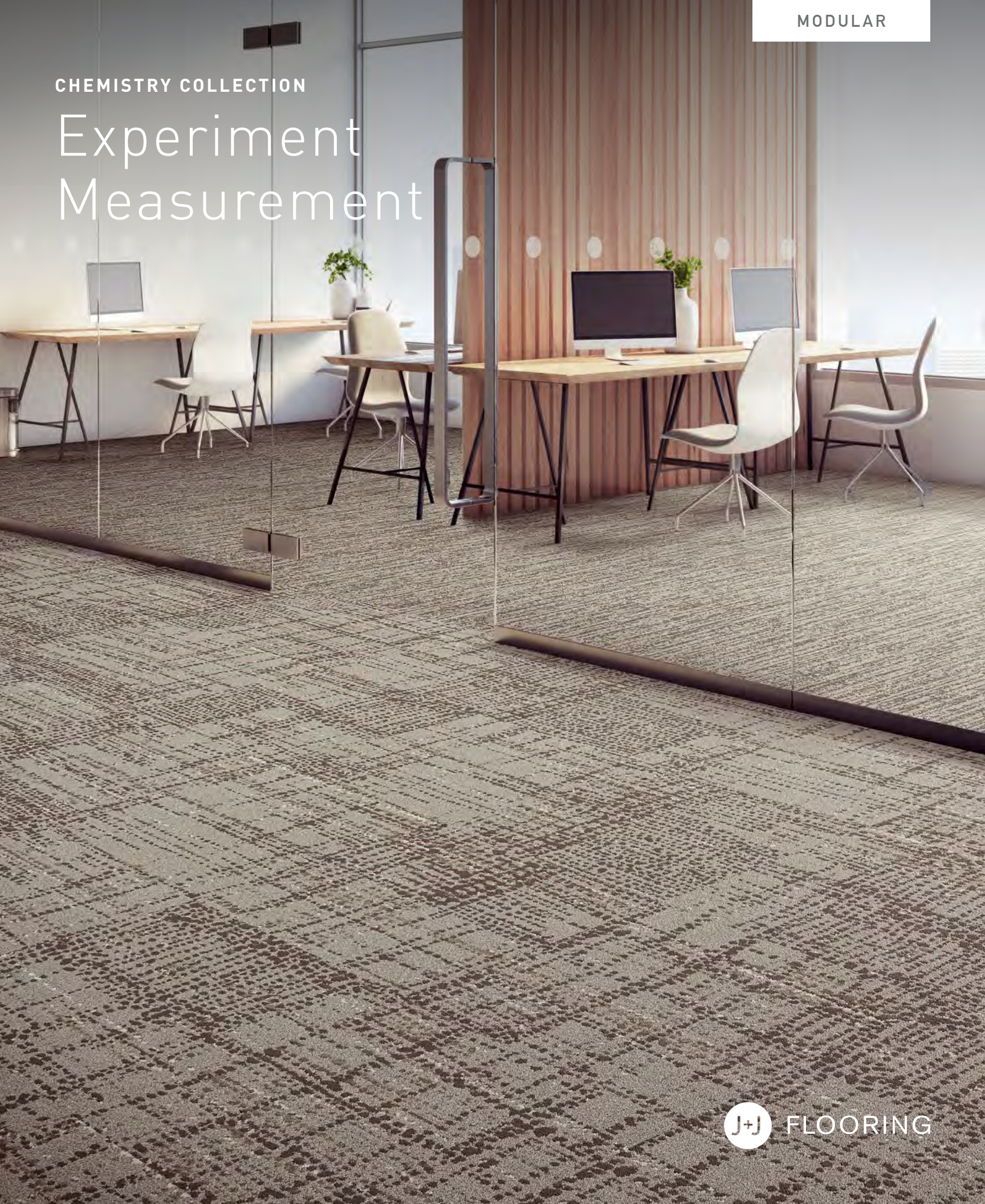


MODULAR

CHEMISTRY COLLECTION

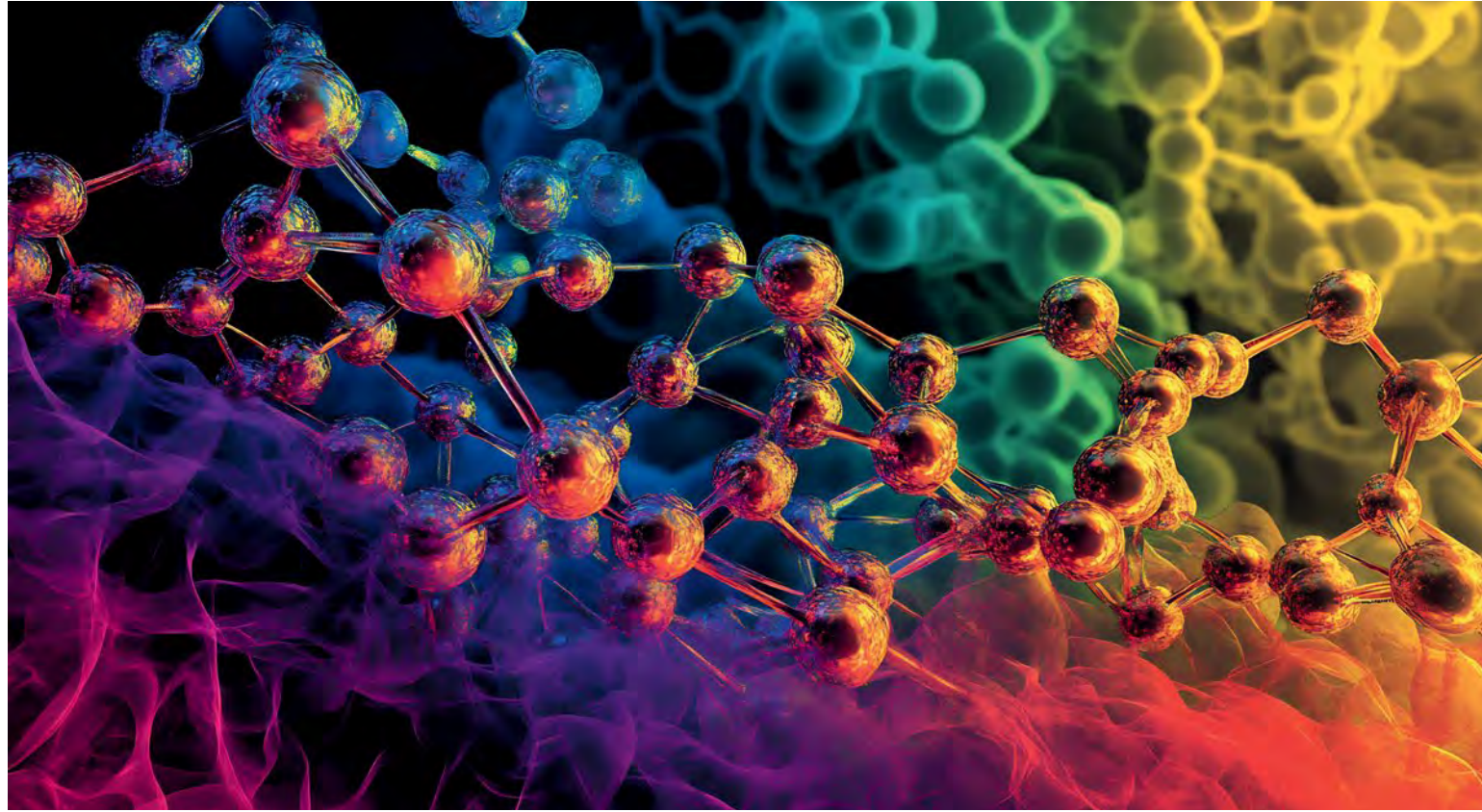
Experiment Measurement



FLOORING

CHEMISTRY COLLECTION

Experiment Measurement



INSPIRATION

Chemistry is a beautiful exploration into the diverse interactions of the tiny particles that make up our world and everyday lives. From the visually appealing science of chemical reactions that produce changes of vibrant color and pattern, to the explosion of molecules rapidly breaking apart and rearranging to form other products, these mesmerizing transformations reveal a brilliant fusion of science and art.

Experiment represents bursts of fragmented atoms of color in varying size and pigment— both subtle and bold. **Measurement** replicates a chemical reaction creating a visual display of intricate patterning.

Both styles of the Chemistry Collection are available as 24"x24" tiles in 12 colorways. We offer sophisticated neutrals of iron, zinc, copper, gold and pewter, along with stylish color accents. These colorways were designed to coordinate with a variety of products across our product platforms.



[cover] MEASUREMENT, EXPERIMENT // UNIT 1A // monolithic
[right] MEASUREMENT // UNIT 1A // monolithic





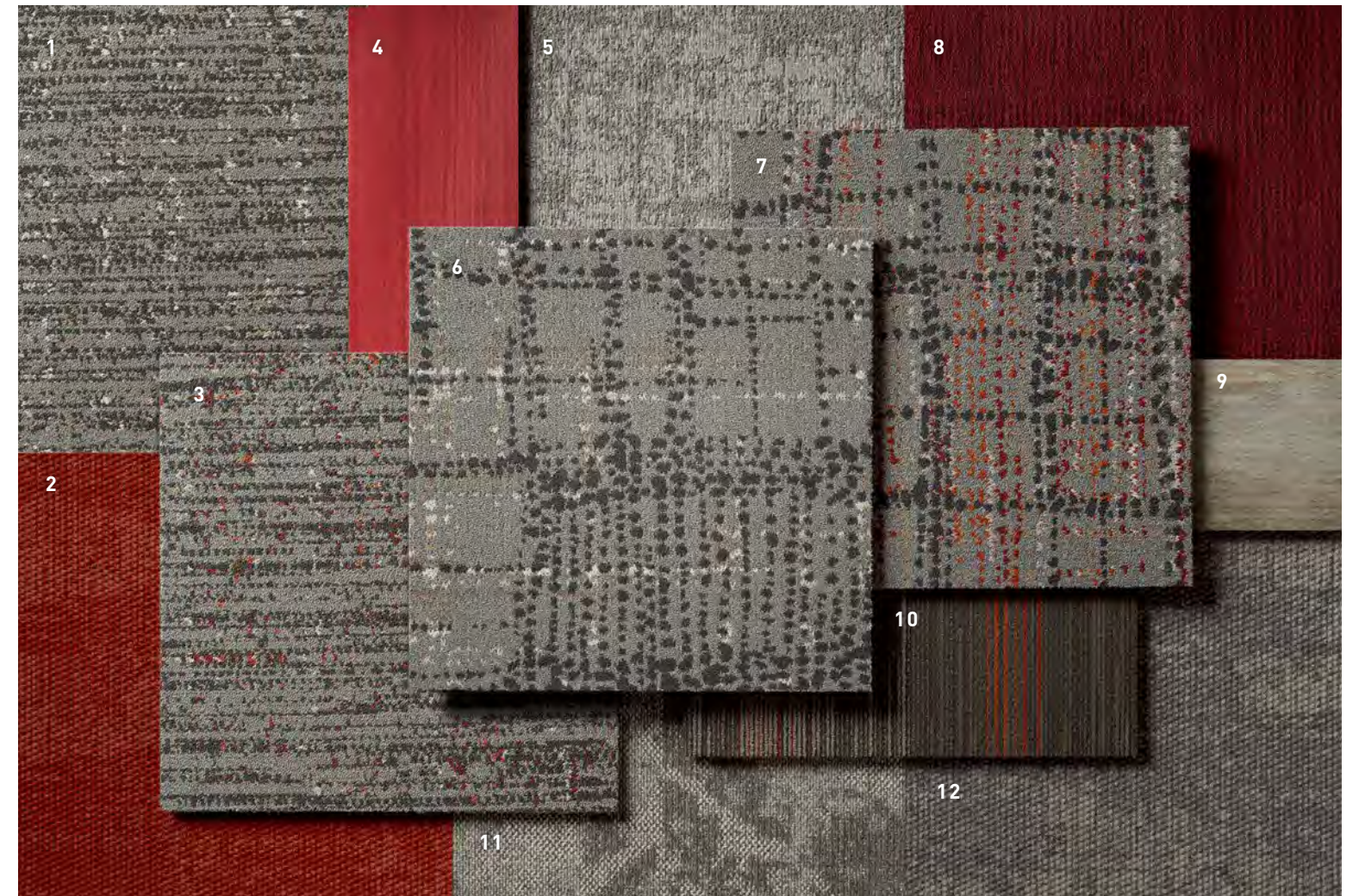
EXPERIMENT // UNIT 6A // ashlar



MEASUREMENT // UNIT 6A // ashtar



MEASUREMENT // UNIT 6A // ashlar



COORDINATES

Beyond the beauty of individual products, our flooring coordinates effortlessly across all of our product platforms - modular carpet tile, broadloom, LVT and Kinetex textile composite flooring. This offering enables you to blend a range of designs with tonal simplicity to create palettes that reflect the demands of each unique space.

1. MEASUREMENT // 7806 // #3733 Unit 3A // Modular

2. NETWORK // 1842 // #2913 Web // Kinetex

3. MEASUREMENT // 7806 // #3734 Unit 3B // Modular

4. MAKE YOUR MARK // V5012 + V5013 // #1074 Candy // LVT

5. CRAFTWORK // 7099 + 6599 // #2204 Painter // Modular + Broadloom

6. EXPERIMENT // 7805 // #3733 Unit 3A // Modular

7. EXPERIMENT // 7805 // #3734 Unit 3B // Modular

8. COLOR ZONE // 7479 // #3369 Wine // Modular

9. POWER PLAY // V5019 + V5020 // #1083 Information // LVT

10. FICTION II // 7025 // #1772 Fantasy // Modular

11. MESA // 7500 // #3478 Basin // Modular

12. NETWORK // 1842 // #2853 Cyber // Kinetex



COORDINATES

Beyond the beauty of individual products, our flooring coordinates effortlessly across all of our product platforms - modular carpet tile, broadloom, LVT and Kinetex textile composite flooring. This offering enables you to blend a range of designs with tonal simplicity to create palettes that reflect the demands of each unique space.

1. ARTISTRY // 7803 // #3673 Sandblast // Modular

2. STEP BY STEP // V5043 + V5044 // #1127 Oatmeal // LVT

3. COMPOSITION // 7507 // #3686 Tumbleweed // Modular

4. MEASUREMENT // 7806 // #3730 Unit 1B // Modular

5. EXPERIMENT // 7805 // #3730 Unit 1B // Modular

6. SEGMENT // V5031 + V5032 // #1117 Fragments // LVT

7. ELEMENTAL // 7683 // #2636 Pipes // Modular

8. FRAMEWORK // V5001 // #1014 Partition // LVT

9. SYNERGY // 1861 // #3701 Solar // Kinetex

10. STRUCTURE // 20100 // #3397 Bracket // Broadloom

11. OBSIDIAN // 7718 // #2960 feldspar // Modular

MEASUREMENT // UNIT 1B // monolithic
FRAMEWORK // PARTITION // ashlar



Experiment 24" X 24" MODULAR



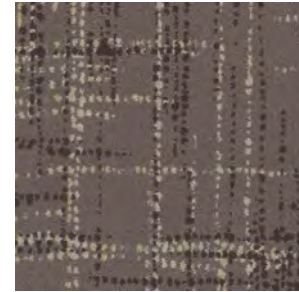
COLOR 3729
unit 1A



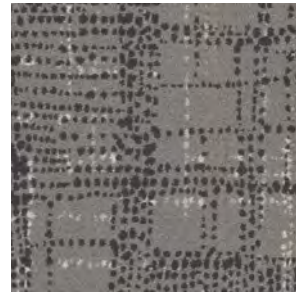
COLOR 3730
unit 1B



COLOR 3731
unit 2A



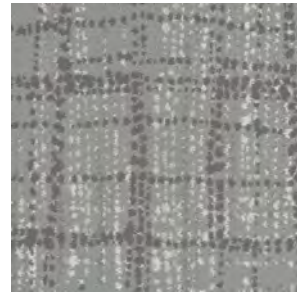
COLOR 3732
unit 2B



COLOR 3733
unit 3A



COLOR 3734
unit 3B



COLOR 3735
unit 4A



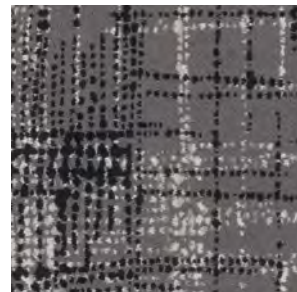
COLOR 3736
unit 4B



COLOR 3737
unit 5A



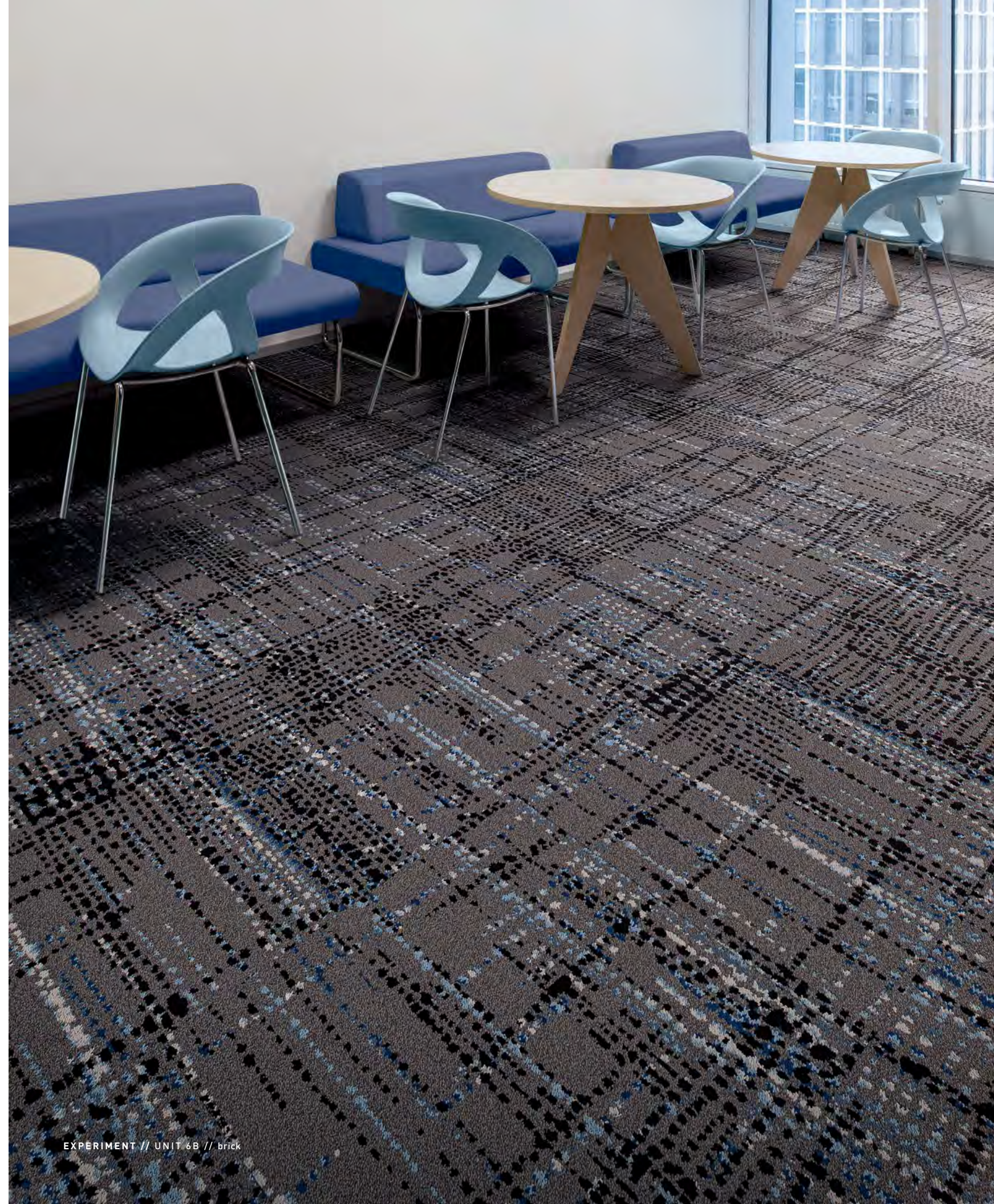
COLOR 3738
unit 5B



COLOR 3739
unit 6A



COLOR 3740
unit 6B



EXPERIMENT // UNIT 6B // brick



Measurement 24" X 24" MODULAR



COLOR 3729
unit 1A



COLOR 3730
unit 1B



COLOR 3731
unit 2A



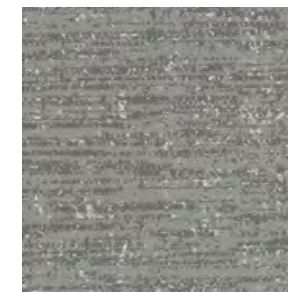
COLOR 3732
unit 2B



COLOR 3733
unit 3A



COLOR 3734
unit 3B



COLOR 3735
unit 4A



COLOR 3736
unit 4B



COLOR 3737
unit 5A



COLOR 3738
unit 5B



COLOR 3739
unit 6A



COLOR 3740
unit 6B

FIBER

Encore® SD Ultima® Nylon

(with recycled content) is specifically engineered to maximize appearance retention with exceptional color, performance, sustainability, and practicality.

FIBER OPTION

Encore® 100

The high recycled content incorporated into Encore 100 nylon provides a reduced environmental impact without compromising quality or color clarity.

- » 100% post-industrial (pre-consumer) recycled content
- » Full inclusion into the J&J Flooring Reclamation Program
- » Lifetime warranty for stain removal, colorfastness, wear and static
- » See sales rep for for availability and price

MOISTURE

Are high levels of moisture in your concrete slab causing issues with your project’s floor covering? We can help.

- » Nexus® Modular Carpet with TileTabs – 99% RH
- » Cost-efficient
- » Long-term performance
- » Straightforward, easy-to-understand warranty
- » Requires no special floor preparation

STANDARD BACKING

Nexus® Modular products can be installed in a variety of ways and are performance engineered to be visually appealing. In addition, they are designed to accommodate your long-term flooring budget.

- » Contains pre-consumer recycled content and contributes to LEED and other sustainable building standards
- » Eligible for landfill diversion through the J+J Flooring Reclamation Program

OPTIONAL BACKING:

Advance Modular Carpet Backing™

is engineered to provide outstanding performance, protection and stability that is required of modular carpet systems.

- » PVC-Free
- » Contains recycled content and contributes to LEED
- » Eligible for landfill diversion through the J+J Flooring Reclamation Program

OTHER BACKING OPTIONS:

Nexus® Cushion

Nexus® FC Cushion



Scan QR Code for backing details

TECHNOLOGIES

ProTex® Anti-Soil Treatment

ProTex is a proprietary anti-soil treatment technology that is applied and bonded to the pile fiber to impede soiling and to improve cleanability. It is standard on all J+J Flooring products.

OPTIONAL:

ProSept® Antimicrobial

Sentir® Advanced Odor-Blocking Technology

ADHESIVE

Commercialon® Premium Modular Adhesive

A high strength acrylic latex-based carpet adhesive specifically formulated for bonding modular PVC backed carpet to the floor. This premium adhesive is for use with all Nexus Modular Tile products. This adhesive is guaranteed for the life of the installation when used in accordance with the J+J Flooring Carpet Installation Handbook. Commercialon Premium Modular Adhesive meets the CRI Low-VOC Emission Criteria, CRI ID# PSA-425402. Commercialon Premium Modular Adhesive is non toxic, has ultra-low odor and is antimicrobial in the dry state.

OPTIONAL:

TileTabs - High Tack Adhesive Tabs (modular only)

STYLE

experiment 7805 modular

measurement 7806 modular

CONSTRUCTION

patterned loop

patterned loop

FIBER TYPE

100% Encore® SD Ultima® Nylon

100% Encore® SD Ultima® Nylon

FIBER OPTION

Encore® 100

Encore® 100

DYE METHOD

solution dyed

solution dyed

OUNCE WEIGHT

22.0 oz./sy (746 grams/m2)

22.0 oz./sy (746 grams/m2)

GAUGE

1/12 (4.72 rows/cm)

1/12 (4.72 rows/cm)

STANDARD BACKING

Nexus® Modular

Nexus® Modular

OPTIONAL BACKING

Advance Modular

Advance Modular

SIZE

24" x 24" (61.0 cm x 61.0 cm)

24" x 24" (61.0 cm x 61.0 cm)

PATTERN REPEAT

n/a

n/a

TOTAL THICKNESS (nominal average)

0.218 inches (0.554 cm)

0.218 inches (0.554 cm)

SPECIAL TECHNOLOGY

ProTex® anti-soil treatment

ProTex® anti-soil treatment

OPTIONAL SPECIAL TECHNOLOGIES

ProSept® antimicrobial
Sentir® advanced odor blocking treatment

ProSept® antimicrobial
Sentir® advanced odor blocking treatment

PHYSICAL TESTING

flooring radiant panel (class 1)

flooring radiant panel (class 1)

pill test – (passes)

pill test – (passes)

smoke density (less than 450 flaming)

smoke density (less than 450 flaming)

static generation – (less than 3.5 kv)

static generation – (less than 3.5 kv)

ADA compliance (compliant for accessible routes)

ADA compliance (compliant for accessible routes)

FIBER WARRANTY

lifetime fiber performance for wear

lifetime fiber performance for wear

lifetime fiber performance for static

lifetime fiber performance for static

lifetime stain removal

lifetime stain removal

lifetime colorfastness to light and atmospheric contaminants

lifetime colorfastness to light and atmospheric contaminants

BACKING WARRANTY

lifetime for tuft bind strength (edge ravel, yarn pulls, zippering)

lifetime for tuft bind strength (edge ravel, yarn pulls, zippering)

lifetime against delamination

lifetime against delamination

lifetime dimensional stability

lifetime dimensional stability

MODULAR INSTALLATION METHODS



ashlar



brick



monolithic



quarter turn

STRAIGHT-FORWARD WARRANTIES

Warranty: Installed with TileTabs	Warranty: Installed with Commercialon® Premium Adhesive (non-prorated)	Warranty: Installed with any other adhesive	Max RH, pH: Installed without Commercialon® Premium Sealer	Max RH, pH: Installed with Commercialon® Premium Sealer
Lifetime	Lifetime	1 Year	90% RH, pH 9 (Nexus Modular & LVT Adhesive) 95% RH, pH 11 (Advance Modular / RH+ Adhesive)	99% RH, pH 11 (Tile Tabs) 97% RH, pH 11 (Commercialon Adhesive)

©2025 J+J Flooring Group, LLC - This unique design is protected under the U.S. Copyright Act of 1976. Any unauthorized copying or duplication of this design constitutes copyright infringement in violation of federal law. Due to the unique visual characteristics of modular carpets, pattern repeats and pattern run-off seams may appear more noticeable than in broadloom carpets. Such visual characteristics do not constitute a manufacturing defect, and as such, should be considered when selecting modular carpet and its installation.

These photographs are representations of the installation for this modular product. Your modular installation may look different than these photos depending upon individual tile placement, lighting, and overall space layout, including furnishings. Final tile placement and the resulting visual is thus the customer's, and not J+J Flooring's responsibility.



Made in the U.S.A.



Nexus® Tile Connectors





P.O. BOX 2207
DALTON, GA 30722
P 800 241 4586
F 706 275 4433
JJFLOORING.COM
MX4725M03

carpet | lvt | kinetex