

# Living Spaces Series





# Living Spaces Series

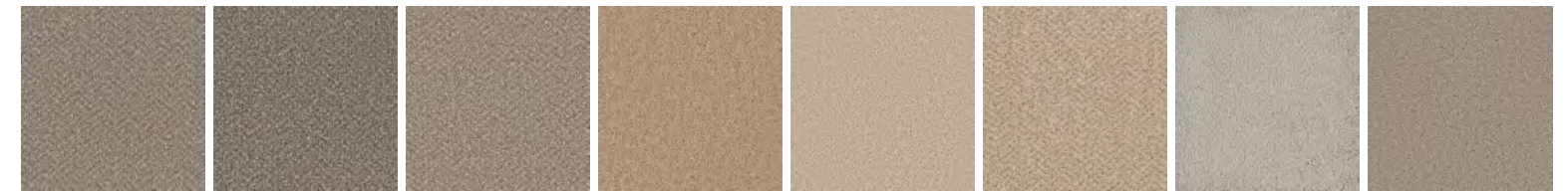
carpet	face weight	good	better	best
AREA	24 oz./sy (814 grams/m <sup>2</sup> )	●		
AMELIA	26 oz./sy (882 grams/m <sup>2</sup> )	●		
SANIBEL	32 oz./sy (1085 grams/m <sup>2</sup> )	●		
LIMELIGHT <small>broadloom</small>	28 oz./sy (949 grams/m <sup>2</sup> )	●		
OVERTURE	28 oz./sy (949 grams/m <sup>2</sup> )	●		
PINNACLE II	28 oz./sy (949 grams/m <sup>2</sup> )		●	
SUMMIT II	30 oz./sy (1017 grams/m <sup>2</sup> )		●	
LIMELIGHT <small>modular</small>	30 oz./sy (1017 grams/m <sup>2</sup> )		●	
FAIRWAY II <small>modular + broadloom</small>	32 oz./sy (1085 grams/m <sup>2</sup> )			●
LINKS II	32 oz./sy (1085 grams/m <sup>2</sup> )			●

LVT	thickness	wear layer	good	better	best
FUSION	2.5mm	12 mil	●		
SIGNATURE II	2.5mm	12 mil	●		
ALLOY	3mm	20 mil		●	
CLASSICS II	3mm	20 mil		●	
ABRIDGE	3mm // 5mm	20 mil		●	●
COMPOSITE	3mm // 5mm	20 mil		●	●
LEGEND	3mm // 5mm	20 mil		●	●
MAKE YOUR MARK	3mm // 5mm	20 mil		●	●
MARBLE	3mm // 5mm	20 mil		●	●
PARQUET	3mm // 5mm	20 mil		●	●
POWER PLAY	3mm // 5mm	20 mil		●	●
SEGMENT	3mm // 5mm	20 mil		●	●
TERAZZO	3mm // 5mm	20 mil		●	●
THE BLEND	5mm	n/a			●
FRAMEWORK	5mm	20 mil			●
TATAMI	5mm	20 mil			●
TIMELESS	5mm	20 mil			●

[cover] LIMELIGHT // CUE // broadloom  
LEGEND // SAGA // ashlar

## Area BROADLOOM

STYLE	N9134
CONSTRUCTION	cut pile
FIBER TYPE	solution dyed PET
OUNCE WEIGHT	24.0 oz/sy (814 grams/m <sup>2</sup> )
DYE METHOD	solution dyed
SIZE	12 ft (3.66 m)
BACKING	standard back



COLOR 2351  
hazel

COLOR 2515  
stone

COLOR 477  
trail

COLOR 530  
latte

COLOR 535  
bisque

COLOR 782  
oat

COLOR 800  
haze

COLOR 945  
clay



AREA // TRAIL // broadloom



# Amelia

BROADLOOM

STYLE	N9131
CONSTRUCTION	cut and loop
FIBER TYPE	solution dyed PET
OUNCE WEIGHT	26.0 oz/sy (882 grams/m <sup>2</sup> )
DYE METHOD	solution dyed
SIZE	12 ft (3.66 m)
BACKING	standard back



# Sanibel

BROADLOOM

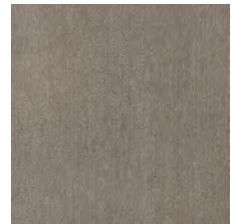
STYLE	N9130
CONSTRUCTION	cut pile
FIBER TYPE	solution dyed PET
OUNCE WEIGHT	32.0 oz/sy (1085 grams/m <sup>2</sup> )
DYE METHOD	solution dyed
SIZE	12 ft (3.66 m)
BACKING	standard back



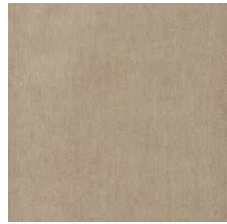


# Limelight BROADLOOM + MODULAR

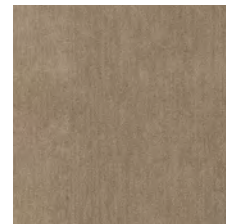
STYLE	N9132	7316
CONSTRUCTION	patterned cut and loop	patterned cut and loop
FIBER TYPE	solution dyed PET	solution dyed PET
OUNCE WEIGHT	28.0 oz/sy (949 grams/m <sup>2</sup> )	30.0 oz/sy (1017 grams/m <sup>2</sup> )
DYE METHOD	solution dyed	solution dyed
SIZE	12 ft (3.66 m)	24" x 24" (61 cm x 61 cm)
BACKING	standard back	Nexus® modular



COLOR 3325  
aria



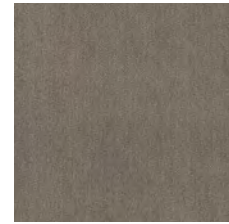
COLOR 3326  
cue



COLOR 3327  
mixer



COLOR 3328  
solo



COLOR 3329  
stage



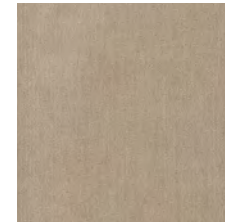
LIMELIGHT // ARIA // broadloom

# Overture BROADLOOM

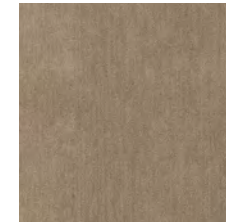
STYLE	N9133
CONSTRUCTION	patterned cut and loop
FIBER TYPE	solution dyed PET
OUNCE WEIGHT	28.0 oz/sy (949 grams/m <sup>2</sup> )
DYE METHOD	solution dyed
SIZE	12 ft (3.66 m)
BACKING	standard back



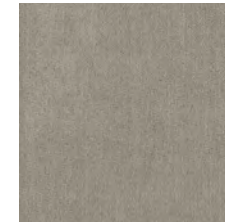
COLOR 3325  
aria



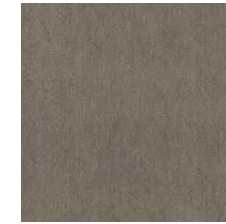
COLOR 3326  
cue



COLOR 3327  
mixer



COLOR 3328  
solo



COLOR 3329  
stage



OVERTURE // ARIA // broadloom



# Pinnacle II BROADLOOM

STYLE	N9092
CONSTRUCTION	cut and loop
FIBER TYPE	PureColor® nylon
OUNCE WEIGHT	28 oz/sy (949 grams/m <sup>2</sup> )
DYE METHOD	solution dyed
SIZE	12 ft (3.66 m)
BACKING	woven synthetic



# Summit II BROADLOOM

STYLE	N9086
CONSTRUCTION	cut pile
FIBER TYPE	PureColor® nylon
OUNCE WEIGHT	30 oz/sy (1017 grams/m <sup>2</sup> )
DYE METHOD	solution dyed
SIZE	12 ft (3.66m)
BACKING	woven synthetic





# Fairway II BROADLOOM + MODULAR

STYLE	N9117	N117
CONSTRUCTION	cut and loop	cut and loop
FIBER TYPE	PureColor® nylon	PureColor® nylon
OUNCE WEIGHT	32 oz/sy (1085 grams/m <sup>2</sup> )	32 oz/sy (1085 grams/m <sup>2</sup> )
DYE METHOD	solution dyed	solution dyed
SIZE	12 ft (3.66 m)	24" x 24" (61 cm x 61 cm)
BACKING	woven synthetic	Nexus® modular



**COLOR 9770** pinehurst    **COLOR 9785** cypress point    **COLOR 9792** augusta    **COLOR 9925** saw grass    **COLOR 9832** pebble beach    **COLOR 9945** glen abbey    **COLOR 9999** sand hills



FAIRWAY II // SAW GRASS // ashlar

# Links II BROADLOOM

STYLE	N9115
CONSTRUCTION	cut and loop
FIBER TYPE	PureColor® nylon
OUNCE WEIGHT	32 oz/sy (1085 grams/m <sup>2</sup> )
DYE METHOD	solution dyed
SIZE	12 ft (3.66 m)
BACKING	woven synthetic



**COLOR 9770** pinehurst    **COLOR 9785** cypress point    **COLOR 9792** augusta    **COLOR 9925** saw grass    **COLOR 9832** pebble beach    **COLOR 9945** glen abbey    **COLOR 9999** sand hills



LINKS II // PEBBLE BEACH // broadloom

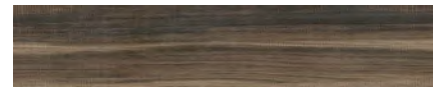


# Fusion LVT

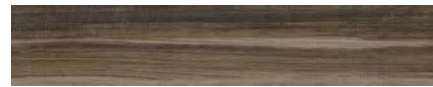
STYLE	V5006
THICKNESS	2.5mm
WEAR LAYER	12 mil
NOMINAL DIMENSIONS	9" x 48" [22.86 cm x 121.92 cm]
PATTERN	random wood pattern
BACKING CLASS	commercial grade
COMMERCIAL TRAFFIC	light commercial



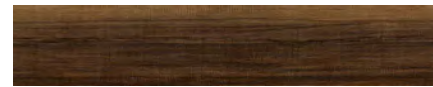
COLOR 1050  
union



COLOR 1052  
compound



COLOR 1051  
blend



COLOR 1053  
intermixture



COLOR 1054  
melting



# Signature II LVT

STYLE	V5028
THICKNESS	2.5mm
WEAR LAYER	12 mil
NOMINAL DIMENSIONS	9" x 48" [22.86 cm x 121.92 cm]
PATTERN	random wood pattern
BACKING CLASS	commercial grade
COMMERCIAL TRAFFIC	light commercial



COLOR 1108  
occupy



COLOR 1000  
notable



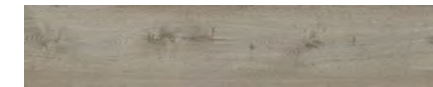
COLOR 1109  
manor



COLOR 1110  
spread



COLOR 1007  
curio



COLOR 1060  
inheritance



COLOR 1003  
heirloom



COLOR 1008  
paradigm





# Abridge LVT

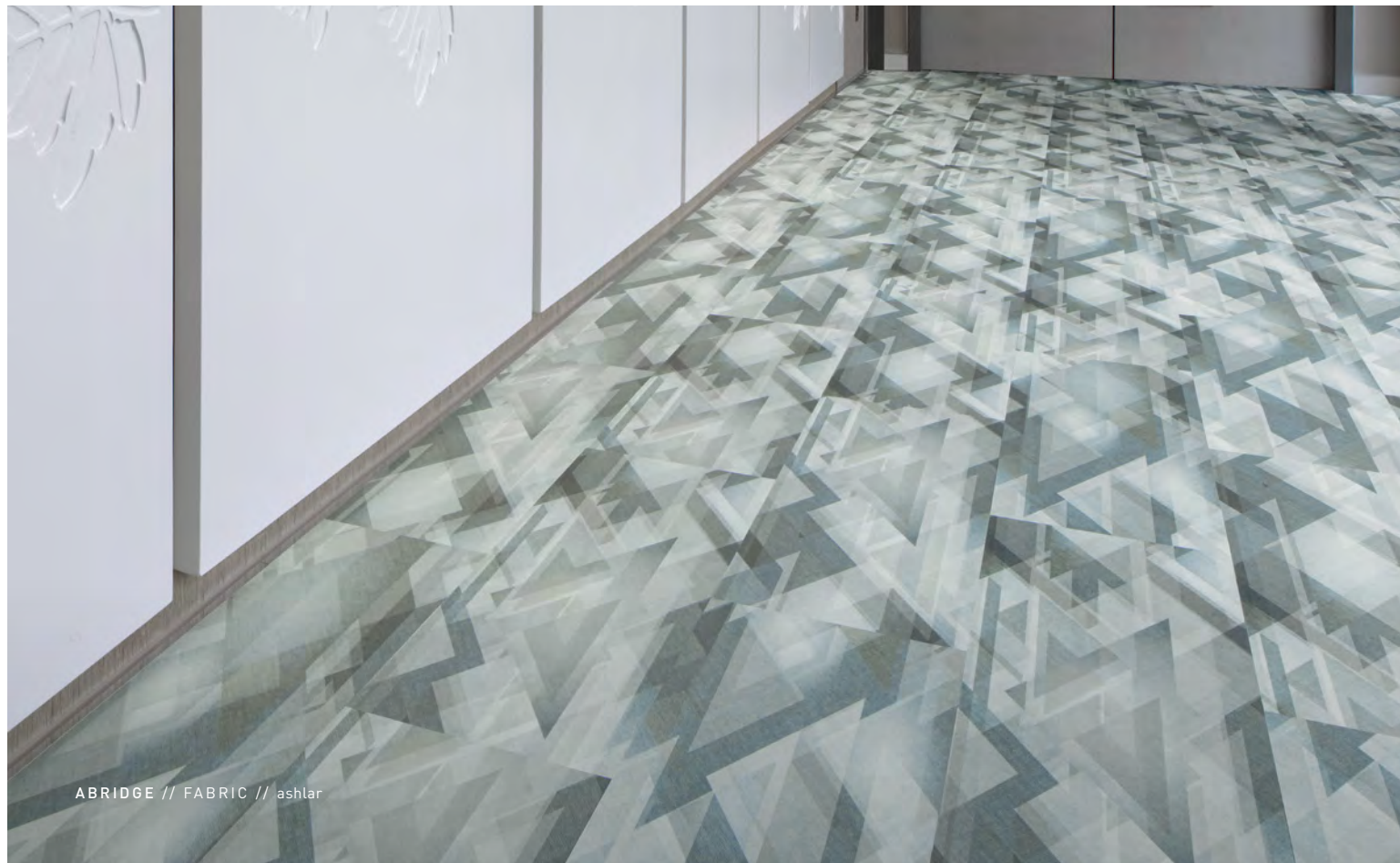
STYLE	V5037	V5038
THICKNESS	3mm	5mm
WEAR LAYER	20 mil	20 mil
NOMINAL DIMENSIONS (INCHES)	18" x 36" (45.72 cm x 91.44 cm)	18" x 36" (45.72 cm x 91.44 cm)
PATTERN	random	random
BACKING CLASS	commercial grade	commercial grade
COMMERCIAL TRAFFIC	heavy commercial	heavy commercial



COLOR 1112  
fabric



COLOR 1111  
textile



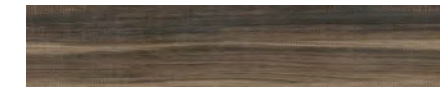
ABRIDGE // FABRIC // ashlar

# Alloy LVT

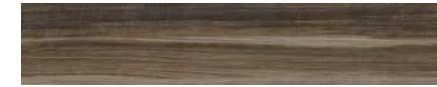
STYLE	V5008
THICKNESS	3mm
WEAR LAYER	20 mil
NOMINAL DIMENSIONS	9" x 48" (22.86 cm x 121.92 cm)
PATTERN	random wood pattern
BACKING CLASS	commercial grade
COMMERCIAL TRAFFIC	heavy commercial



COLOR 1050  
union



COLOR 1052  
compound



COLOR 1051  
blend



COLOR 1053  
intermixture



COLOR 1054  
melting



ALLOY // BLEND // ashlar



# Classics II LVT

STYLE	V5023
THICKNESS	3 mm
WEAR LAYER	20 mil
NOMINAL DIMENSIONS	9" x 48" [22.86 cm x 121.92 cm]
PATTERN	random wood pattern
BACKING CLASS	commercial grade
COMMERCIAL TRAFFIC	heavy commercial



COLOR 1089  
value



COLOR 1087  
ideal



COLOR 1090  
standards



COLOR 1091  
rarity



COLOR 1107  
principle



COLOR 1000  
notable



COLOR 1088  
benchmark



COLOR 1009  
heritage



COLOR 1003  
heirloom



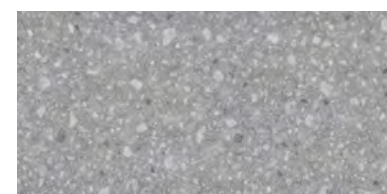
COLOR 1008  
paradigm



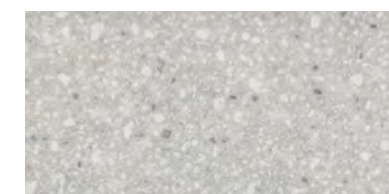
CLASSICS II // RARITY // 1/2 drop

# Composite LVT

STYLE	V5041	V5042
THICKNESS	3mm	5mm
WEAR LAYER	20 mil	20 mil
NOMINAL DIMENSIONS (INCHES)	18" x 36" [45.72 cm x 91.44 cm]	18" x 36" [45.72 cm x 91.44 cm]
PATTERN	random	random
BACKING CLASS	commercial grade	commercial grade
COMMERCIAL TRAFFIC	heavy commercial	heavy commercial



COLOR 1115  
suitable



COLOR 1116  
natural

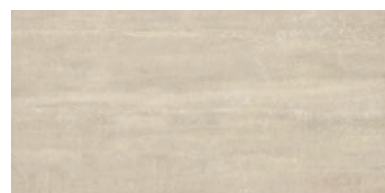


COMPOSITE // SUITABLE // monolithic

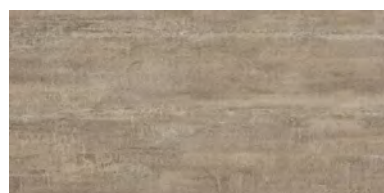


# Legend LVT

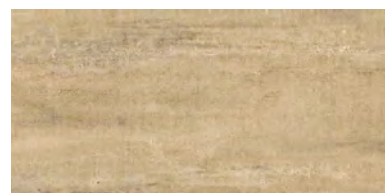
STYLE	V5009	V5010
THICKNESS	3mm	5mm
WEAR LAYER	20 mil	20 mil
NOMINAL DIMENSIONS (INCHES)	18" x 36" (45.72 cm x 91.44 cm)	18" x 36" (45.72 cm x 91.44 cm)
PATTERN	random	random
BACKING CLASS	commercial grade	commercial grade
COMMERCIAL TRAFFIC	heavy commercial	heavy commercial



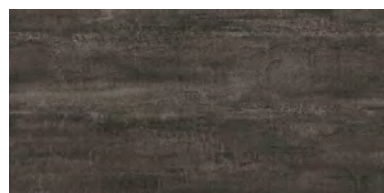
COLOR 1055  
saga



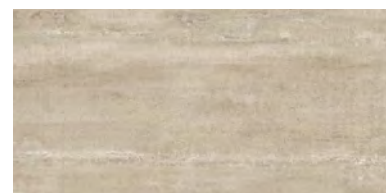
COLOR 1057  
tale



COLOR 1056  
epic



COLOR 1058  
fable



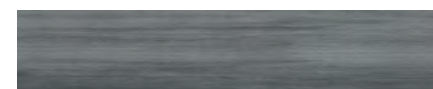
COLOR 1059  
fiction



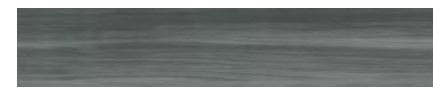
LEGEND // TALE // ashlar

# Make Your Mark LVT

STYLE	V5013	V5012
THICKNESS	3mm	5mm
WEAR LAYER	20 mil	20 mil
NOMINAL DIMENSIONS (INCHES)	9" x 48" (22.86 cm x 121.92 cm)	9" x 48" (22.86 cm x 121.92 cm)
PATTERN	random	random
BACKING CLASS	commercial grade	commercial grade
COMMERCIAL TRAFFIC	heavy commercial	heavy commercial



COLOR 1063  
shadow



COLOR 1064  
smoke



COLOR 1065  
charcoal



COLOR 1066  
sapphire



COLOR 1067  
cobalt



COLOR 1068  
denim



COLOR 1069  
lime



COLOR 1070  
fern



COLOR 1071  
iris



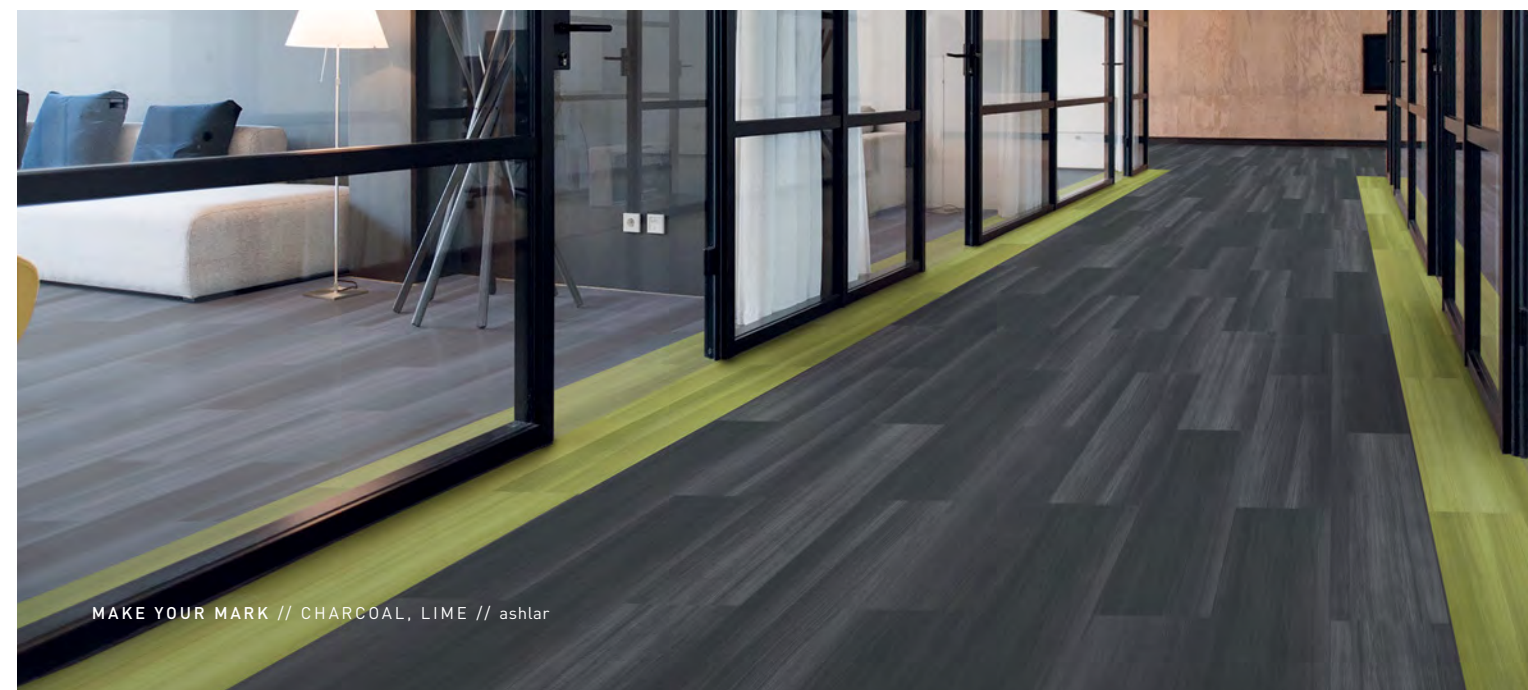
COLOR 1072  
marigold



COLOR 1073  
tangerine



COLOR 1074  
candy



MAKE YOUR MARK // CHARCOAL, LIME // ashlar



# Marble LVT

STYLE	V5033	V5034
THICKNESS	3mm	5mm
WEAR LAYER	20 mil	20 mil
NOMINAL DIMENSIONS (INCHES)	18" x 36" (45.72 cm x 91.44 cm)	18" x 36" (45.72 cm x 91.44 cm)
PATTERN	random	random
BACKING CLASS	commercial grade	commercial grade
COMMERCIAL TRAFFIC	heavy commercial	heavy commercial



COLOR 1120  
agate



MARBLE // AGATE // ashlar

# Parquet LVT

STYLE	V5039	V5040
THICKNESS	3mm	5mm
WEAR LAYER	20 mil	20 mil
NOMINAL DIMENSIONS (INCHES)	18" x 36" (45.72 cm x 91.44 cm)	18" x 36" (45.72 cm x 91.44 cm)
PATTERN	random	random
BACKING CLASS	commercial grade	commercial grade
COMMERCIAL TRAFFIC	heavy commercial	heavy commercial



COLOR 1113  
structural



COLOR 1114  
wood-block

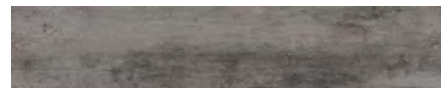


PARQUET // WOOD-BLOCK // monolithic

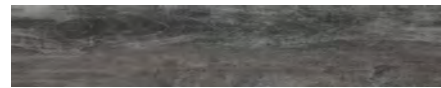


# Power Play LVT

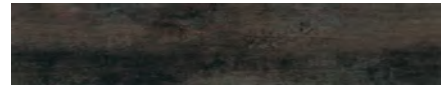
STYLE	V5019	V5020
THICKNESS	3mm	5mm
WEAR LAYER	20 mil	20 mil
NOMINAL DIMENSIONS (INCHES)	9" x 48" (22.86 cm x 121.92 cm)	9" x 48" (22.86 cm x 121.92 cm)
PATTERN	random	random
BACKING CLASS	commercial grade	commercial grade
COMMERCIAL TRAFFIC	heavy commercial	heavy commercial



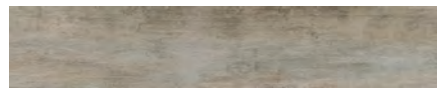
COLOR 1080  
knowledge



COLOR 1081  
advantage



COLOR 1082  
situation



COLOR 1083  
information



COLOR 1085  
dominance



COLOR 1086  
influence



COLOR 1084  
leverage



POWER PLAY // KNOWLEDGE // herringbone

# Segment LVT

STYLE	V5031	V5032
THICKNESS	3mm	5mm
WEAR LAYER	20 mil	20 mil
NOMINAL DIMENSIONS (INCHES)	18" x 36" (45.72 cm x 91.44 cm)	18" x 36" (45.72 cm x 91.44 cm)
PATTERN	random	random
BACKING CLASS	commercial grade	commercial grade
COMMERCIAL TRAFFIC	heavy commercial	heavy commercial



COLOR 1117  
fragments



COLOR 1118  
mosaic

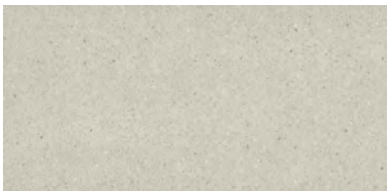


SEGMENT // MOSAIC // monolithic



# Terrazzo LVT

STYLE	V5035	V5036
THICKNESS	3mm	5mm
WEAR LAYER	20 mil	20 mil
NOMINAL DIMENSIONS (INCHES)	18" x 36" (45.72 cm x 91.44 cm)	18" x 36" (45.72 cm x 91.44 cm)
PATTERN	random	random
BACKING CLASS	commercial grade	commercial grade
COMMERCIAL TRAFFIC	heavy commercial	heavy commercial



COLOR 1119  
pebble



TERRAZZO // PEBBLE // monolithic

# The Blend



STYLE	V5051
TYPE	Direct Digital Print & Emboss SPC
THICKNESS	5mm
AC RATING	AC3 (Equivalent to 20 mil wear layer)
NOMINAL DIMENSIONS (INCHES)	7" x 48" (17.78 cm x 121.92 cm)
PATTERN REPEAT	35 unique planks
LOCKING MECHANISM	One2Click® Angle/Angle
COMMERCIAL TRAFFIC	commercial



COLOR 1151  
inspire



COLOR 1152  
transition



COLOR 1153  
community



THE BLEND // CASPIAN // ashlar



# Framework LVT

STYLE	V5001
THICKNESS	5 mm
WEAR LAYER	20 mil
NOMINAL DIMENSIONS	9" x 48" [22.86 cm x 121.92 cm]
PATTERN	random wood pattern
BACKING CLASS	commercial grade
COMMERCIAL TRAFFIC	heavy commercial



COLOR 1010  
pier



COLOR 1012  
anchor



COLOR 1014  
partition



COLOR 1011  
header



COLOR 1013  
brace



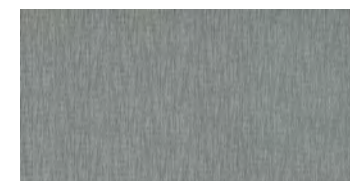
COLOR 1015  
beam



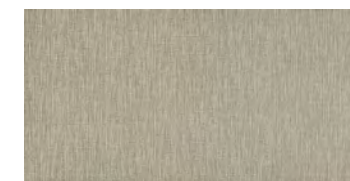
FRAMEWORK // PIER // herringbone

# Tatami LVT

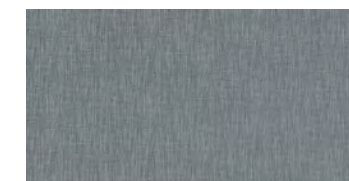
STYLE	V5003
THICKNESS	5 mm
WEAR LAYER	20 mil
NOMINAL DIMENSIONS	18" x 36" [45.72 cm x 91.44 cm]
PATTERN	random textile pattern
BACKING CLASS	commercial grade
COMMERCIAL TRAFFIC	heavy commercial



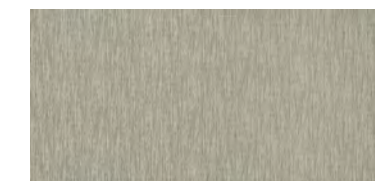
COLOR 1019  
edo



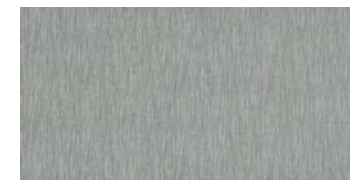
COLOR 1017  
nara



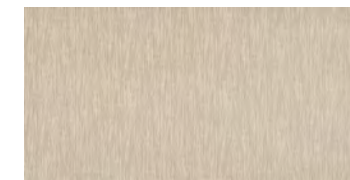
COLOR 1023  
zen



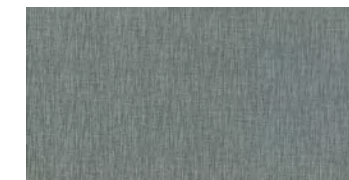
COLOR 1021  
goza



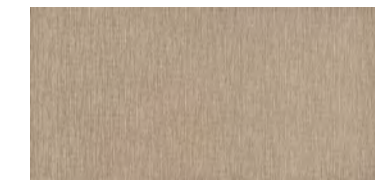
COLOR 1018  
kyoto



COLOR 1016  
straw



COLOR 1022  
wabi



COLOR 1020  
rush



TATAMI // ZEN // parquet



# Timeless LVT

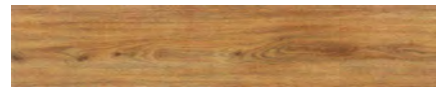
STYLE	V5011
THICKNESS	5 mm
WEAR LAYER	20 mil
NOMINAL DIMENSIONS	9" x 48" [22.86 cm x 121.92 cm]
PATTERN	random wood pattern
BACKING CLASS	commercial grade
COMMERCIAL TRAFFIC	heavy commercial



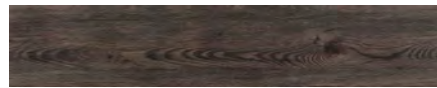
COLOR 1000  
notable



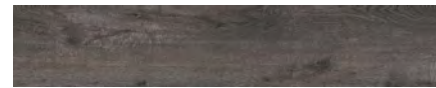
COLOR 1008  
paradigm



COLOR 1003  
heirloom



COLOR 1009  
heritage



COLOR 1061  
gift



COLOR 1007  
curio



COLOR 1060  
inheritance



COLOR 1062  
estate



TIMELESS // PARADIGM // ashtar  
[back cover] LEGEND // FICTION // 1/3 drop // FAIRWAY II // PEBBLE BEACH // monolithic

## SUSTAINABLY SOUND

J+J Flooring believes true sustainability requires full attention to the potential impacts of every aspect of our business. In accordance with our mission of waste reduction, J+J LVT products are 100% recyclable. You can rest assured that health is also a top priority and all J+J Flooring LVT products are FloorScore Certified.



## MOISTURE

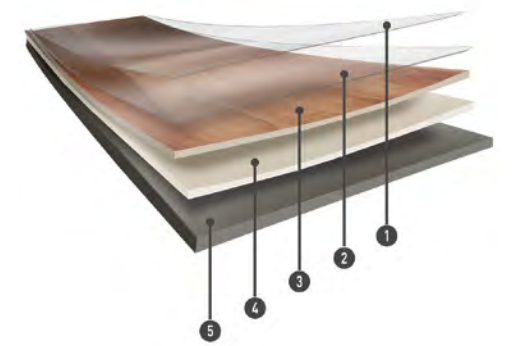
Are high levels of moisture in your concrete slab causing issues with your project's floor covering? We can help.

- » Cost-efficient
- » Long-term performance
- » Requires no special floor preparation

Installed without Commercialon® Premium Sealer	<b>90% RH, pH 9</b>
Installed with Commercialon® Premium Sealer	<b>99% RH, pH 11 (TileTabs, 5mm) 97% RH, pH 11 Commercialon Adhesive (2.5mm, 3mm)</b>
Installed with Commercialon® High Moisture Adhesive	<b>99% RH, pH12</b>

## ZPT ANTI-MICROBIAL TREATMENT

J+J Flooring LVT features a standard enhancement of ZPT (Zinc Protective Technology) anti-microbial. Dispersed into the product during the manufacturing process, ZPT anti-microbial prevents unpleasant odors, degradation and discoloration as a result of microbial contamination. ZPT contains Zinc Pyrithione as the main ingredient with no harmful additives. Zinc Pyrithione is a common dandruff shampoo ingredient and proven to be safe in both household and commercial use. ZPT anti-microbial technology guarantees your J+J Flooring LVT will provide a beautiful, long lasting and safe floor covering for years to come.



- 1 Protective UV Cured Urethane with Ceramic Bead
- 2 Wear Layer
- 3 High Definition Print Film
- 4 Impact Resistant Core Layer
- 5 Foundational Base Layer

## COMMERCIALON® PREMIUM MODULAR ADHESIVE

A high strength acrylic latex-based adhesive specifically formulated for bonding modular PVC backed carpet and LVT to the floor. This premium adhesive is for use with all Nexus Modular Tile and J+J Flooring LVT products. This adhesive is guaranteed for the life of the installation when used in accordance with the J+J Flooring Carpet and LVT installation instructions. Commercialon Premium Modular Adhesive meets the CRI Low-VOC Emission Criteria, CRI ID# PSA-425402. Commercialon Premium Modular Adhesive is non toxic, has ultra-low odor and is antimicrobial in the dry state.

OPTIONAL:

### Commercialon® High Moisture Adhesive

**TileTabs** - High Tack Adhesive Tabs (5mm only)

## WARRANTIES

We stand behind every aspect of our LVT. Each warranty is covered for 10 years, provided that installation and maintenance is in accordance with J+J Flooring's LVT Installation instructions.

Installed with Commercialon® Premium Adhesive (non-prorated)	Installed with TileTabs	Installed with any other adhesive
<b>10 years</b>	<b>10 years (5mm only)</b>	<b>1 Year</b>





**COORDINATES**

Beyond the beauty of individual products, our flooring coordinates effortlessly across all of our product platforms - modular carpet tile, broadloom, LVT and Kinetex textile composite flooring. This offering enables you to blend a range of designs with tonal simplicity to create palettes that reflect the demands of each unique space.

- 1. **COSMOS** // 7720 // 3526 Virgo // modular

---

- 2. **INTRINSIC** // 7096 // 2719 Essential // modular

---

- 3. **SUMMIT II** // N9086 // 9925 Plateau // broadloom

---

- 4. **TABBY** // 7802 // 3628 Truffle // modular

---

- 5. **LIMELIGHT** // N9132 + 7316 // 3325 Aria // broadloom + modular

---

- 6. **REED** // 7800 // 3628 Truffle // modular

---

- 7. **LIMELIGHT** // N9132 + 7316 // 3329 Stage // broadloom + modular

---

- 8. **PINNACLE II** // N9092 // 9925 Talus // broadloom

---

- 9. **SIGNATURE II** // V5028 // 1060 Inheritance // LVT

---

- 10. **GALAXY** // 7719 // 3526 Virgo // modular

---

- 11. **QUILL** // 7801 // 3628 Truffle // modular

---

- 12. **URBAN AVE** // 1843 // 2971 Community // kinetex



**COORDINATES**

Beyond the beauty of individual products, our flooring coordinates effortlessly across all of our product platforms - modular carpet tile, broadloom, LVT and Kinetex textile composite flooring. This offering enables you to blend a range of designs with tonal simplicity to create palettes that reflect the demands of each unique space.

- 1. **FUNCTION** // 7410 // 1800 Camber // modular

---

- 2. **LEGEND** // V5009 + V5010 // 1056 Epic // LVT

---

- 3. **FAIRWAY II** // N9117 + N117 // 9970 Pinehurst // broadloom + modular

---

- 4. **SUMMIT II** // N9086 // 9785 Limestone // broadloom

---

- 5. **ETCHED** // 7030 // 1983 Impression // modular

---

- 6. **TWILL WEAVE** // 7586 // 2874 Mills // modular

---

- 7. **LINKS II** // N9115 // 9770 Pinehurst // broadloom

---

- 8. **FRAMEWORK** // V5001 // 1015 Beam // LVT

---

- 9. **VERIFY** // 6097 // 3563 Essential Accent // broadloom

---

- 10. **STRUCTURE** // 20100 // 1800 Camber // broadloom

---

- 11. **REVEAL** // 7685 // 2635 Raw // modular

---

- 12. **FRACTURED PLAID** // 7587 // 2874 Mills // modular





P.O. BOX 2207  
DALTON, GA 30722  
P 800 241 4586  
F 706 275 4433  
JJFLOORING.COM  
AX0624M04

carpet | lvt | kinetex