

Living Spaces Series



Living Spaces Series

carpet	face weight	good	better	best
AREA	24 oz./sy (814 grams/m ²)	●		
AMELIA	26 oz./sy (882 grams/m ²)	●		
SANIBEL	32 oz./sy (1085 grams/m ²)	●		
LIMELIGHT broadloom	28 oz./sy (949 grams/m ²)	●		
OVERTURE	28 oz./sy (949 grams/m ²)	●		
PINNACLE II	28 oz./sy (949 grams/m ²)		●	
SUMMIT II	30 oz./sy (1017 grams/m ²)		●	
LIMELIGHT modular	30 oz./sy (1017 grams/m ²)		●	
FAIRWAY II modular + broadloom	32 oz./sy (1085 grams/m ²)			●
LINKS II	32 oz./sy (1085 grams/m ²)			●

LVT	thickness	wear layer	good	better	best
FUSION	2.5mm	12 mil	●		
SIGNATURE II	2.5mm	12 mil	●		
ALLOY	3mm	20 mil		●	
CLASSICS II	3mm	20 mil		●	
ABRIDGE	3mm // 5mm	20 mil		●	●
COMPOSITE	3mm // 5mm	20 mil		●	●
LEGEND	3mm // 5mm	20 mil		●	●
MAKE YOUR MARK	3mm // 5mm	20 mil		●	●
MARBLE	3mm // 5mm	20 mil		●	●
PARQUET	3mm // 5mm	20 mil		●	●
POWER PLAY	3mm // 5mm	20 mil		●	●
SEGMENT	3mm // 5mm	20 mil		●	●
TERAZZO	3mm // 5mm	20 mil		●	●
THE BLEND	5mm	n/a			●
FRAMEWORK	5mm	20 mil			●
TATAMI	5mm	20 mil			●
TIMELESS	5mm	20 mil			●

[cover] LIMELIGHT // CUE // broadloom
LEGEND // SAGA // ashtar

Area BROADLOOM

STYLE	N9134
CONSTRUCTION	cut pile
FIBER TYPE	solution dyed PET
OUNCE WEIGHT	24.0 oz/sy (814 grams/m ²)
DYE METHOD	solution dyed
SIZE	12 ft (3.66 m)
BACKING	standard back



COLOR 2351
hazel

COLOR 2515
stone

COLOR 477
trail

COLOR 530
latte

COLOR 535
bisque

COLOR 782
oat

COLOR 800
haze

COLOR 945
clay



AREA // TRAIL // broadloom

Amelia

BROADLOOM

STYLE	N9131
CONSTRUCTION	cut and loop
FIBER TYPE	solution dyed PET
OUNCE WEIGHT	26.0 oz/sy (882 grams/m ²)
DYE METHOD	solution dyed
SIZE	12 ft (3.66 m)
BACKING	standard back



Sanibel

BROADLOOM

STYLE	N9130
CONSTRUCTION	cut pile
FIBER TYPE	solution dyed PET
OUNCE WEIGHT	32.0 oz/sy (1085 grams/m ²)
DYE METHOD	solution dyed
SIZE	12 ft (3.66 m)
BACKING	standard back



Limelight BROADLOOM + MODULAR

STYLE	N9132	7316
CONSTRUCTION	patterned cut and loop	patterned cut and loop
FIBER TYPE	solution dyed PET	solution dyed PET
OUNCE WEIGHT	28.0 oz/sy (949 grams/m ²)	30.0 oz/sy (1017 grams/m ²)
DYE METHOD	solution dyed	solution dyed
SIZE	12 ft (3.66 m)	24" x 24" (61 cm x 61 cm)
BACKING	standard back	Nexus® modular



COLOR 3325
aria



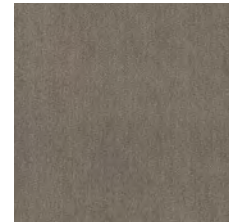
COLOR 3326
cue



COLOR 3327
mixer



COLOR 3328
solo



COLOR 3329
stage



LIMELIGHT // ARIA // broadloom

Overture BROADLOOM

STYLE	N9133
CONSTRUCTION	patterned cut and loop
FIBER TYPE	solution dyed PET
OUNCE WEIGHT	28.0 oz/sy (949 grams/m ²)
DYE METHOD	solution dyed
SIZE	12 ft (3.66 m)
BACKING	standard back



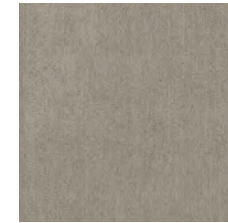
COLOR 3325
aria



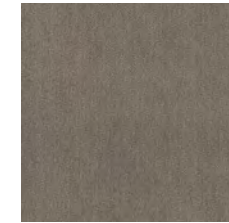
COLOR 3326
cue



COLOR 3327
mixer



COLOR 3328
solo



COLOR 3329
stage



OVERTURE // ARIA // broadloom

Pinnacle II BROADLOOM

STYLE	N9092
CONSTRUCTION	cut and loop
FIBER TYPE	PureColor® nylon
OUNCE WEIGHT	28 oz/sy (949 grams/m ²)
DYE METHOD	solution dyed
SIZE	12 ft (3.66 m)
BACKING	woven synthetic



Summit II BROADLOOM

STYLE	N9086
CONSTRUCTION	cut pile
FIBER TYPE	PureColor® nylon
OUNCE WEIGHT	30 oz/sy (1017 grams/m ²)
DYE METHOD	solution dyed
SIZE	12 ft (3.66m)
BACKING	woven synthetic



Fairway II BROADLOOM + MODULAR

STYLE	N9117	N117
CONSTRUCTION	cut and loop	cut and loop
FIBER TYPE	PureColor® nylon	PureColor® nylon
OUNCE WEIGHT	32 oz/sy (1085 grams/m ²)	32 oz/sy (1085 grams/m ²)
DYE METHOD	solution dyed	solution dyed
SIZE	12 ft (3.66 m)	24" x 24" (61 cm x 61 cm)
BACKING	woven synthetic	Nexus® modular



COLOR 9770 pinehurst **COLOR 9785** cypress point **COLOR 9792** augusta **COLOR 9925** saw grass **COLOR 9832** pebble beach **COLOR 9945** glen abbey **COLOR 9999** sand hills



FAIRWAY II // SAW GRASS // ashlar

Links II BROADLOOM

STYLE	N9115
CONSTRUCTION	cut and loop
FIBER TYPE	PureColor® nylon
OUNCE WEIGHT	32 oz/sy (1085 grams/m ²)
DYE METHOD	solution dyed
SIZE	12 ft (3.66 m)
BACKING	woven synthetic



COLOR 9770 pinehurst **COLOR 9785** cypress point **COLOR 9792** augusta **COLOR 9925** saw grass **COLOR 9832** pebble beach **COLOR 9945** glen abbey **COLOR 9999** sand hills



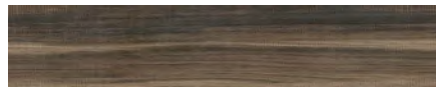
LINKS II // PEBBLE BEACH // broadloom

Fusion LVT

STYLE	V5006
THICKNESS	2.5mm
WEAR LAYER	12 mil
NOMINAL DIMENSIONS	9" x 48" [22.86 cm x 121.92 cm]
PATTERN	random wood pattern
BACKING CLASS	commercial grade
COMMERCIAL TRAFFIC	light commercial



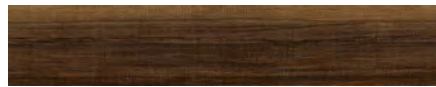
COLOR 1050
union



COLOR 1052
compound



COLOR 1051
blend



COLOR 1053
intermixture



COLOR 1054
melting



Signature II LVT

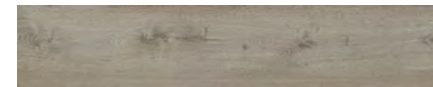
STYLE	V5028
THICKNESS	2.5mm
WEAR LAYER	12 mil
NOMINAL DIMENSIONS	9" x 48" [22.86 cm x 121.92 cm]
PATTERN	random wood pattern
BACKING CLASS	commercial grade
COMMERCIAL TRAFFIC	light commercial



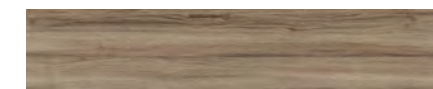
COLOR 1108
occupy



COLOR 1109
manor



COLOR 1060
inheritance



COLOR 1000
notable



COLOR 1110
spread



COLOR 1003
heirloom



COLOR 1007
curio



COLOR 1008
paradigm



Abridge LVT

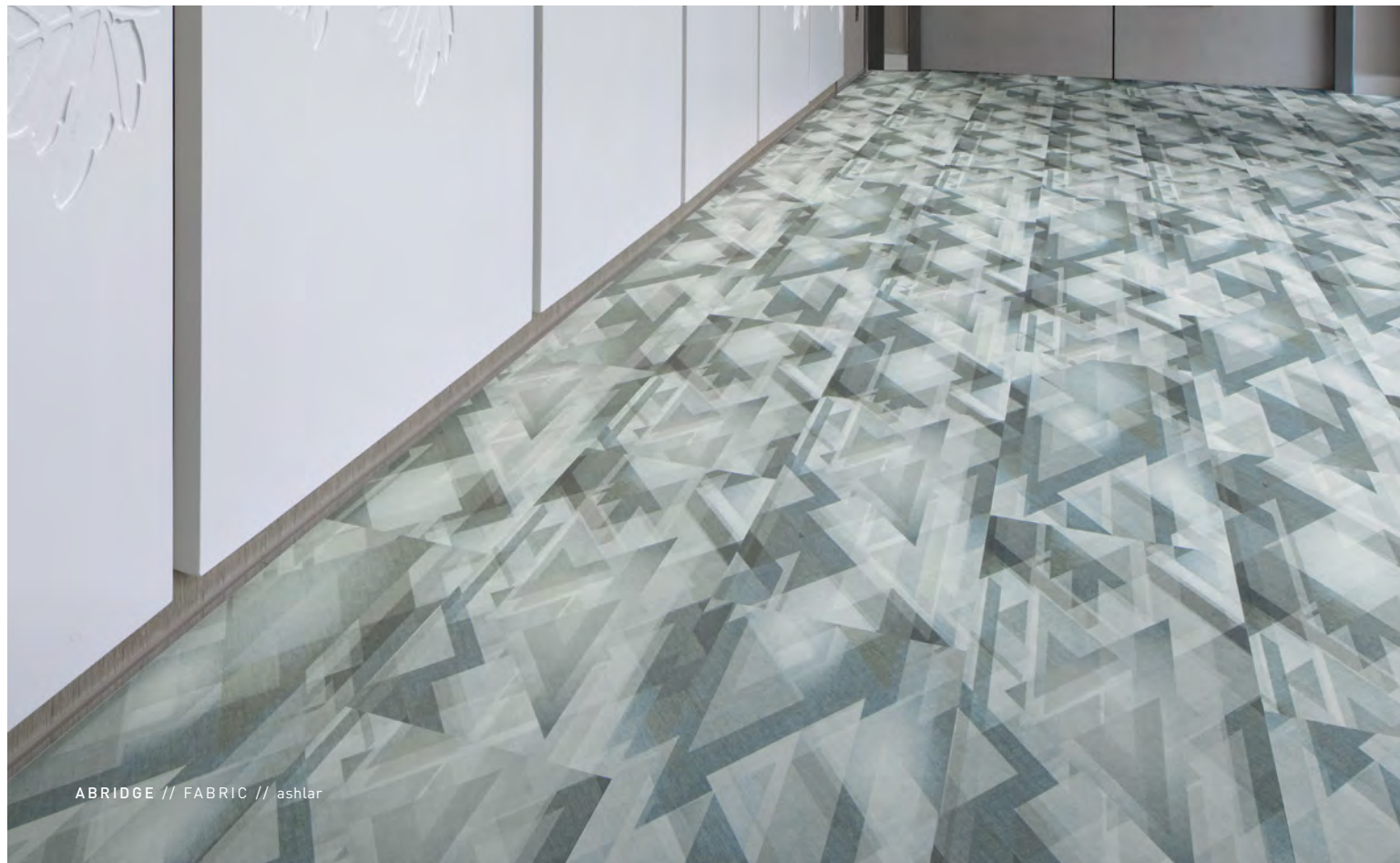
STYLE	V5037	V5038
THICKNESS	3mm	5mm
WEAR LAYER	20 mil	20 mil
NOMINAL DIMENSIONS (INCHES)	18" x 36" (45.72 cm x 91.44 cm)	18" x 36" (45.72 cm x 91.44 cm)
PATTERN	random	random
BACKING CLASS	commercial grade	commercial grade
COMMERCIAL TRAFFIC	heavy commercial	heavy commercial



COLOR 1112
fabric



COLOR 1111
textile



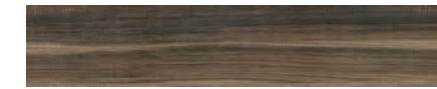
ABRIDGE // FABRIC // ashlar

Alloy LVT

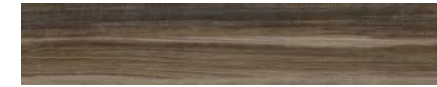
STYLE	V5008
THICKNESS	3mm
WEAR LAYER	20 mil
NOMINAL DIMENSIONS	9" x 48" (22.86 cm x 121.92 cm)
PATTERN	random wood pattern
BACKING CLASS	commercial grade
COMMERCIAL TRAFFIC	heavy commercial



COLOR 1050
union



COLOR 1052
compound



COLOR 1051
blend



COLOR 1053
intermixture



COLOR 1054
melting



ALLOY // BLEND // ashlar

Classics II LVT

STYLE	V5023
THICKNESS	3 mm
WEAR LAYER	20 mil
NOMINAL DIMENSIONS	9" x 48" [22.86 cm x 121.92 cm]
PATTERN	random wood pattern
BACKING CLASS	commercial grade
COMMERCIAL TRAFFIC	heavy commercial



COLOR 1089
value



COLOR 1087
ideal



COLOR 1090
standards



COLOR 1091
rarity



COLOR 1107
principle



COLOR 1000
notable



COLOR 1088
benchmark



COLOR 1009
heritage



COLOR 1003
heirloom



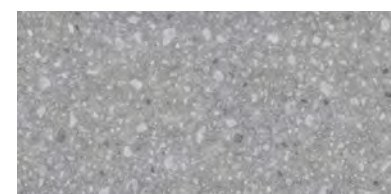
COLOR 1008
paradigm



CLASSICS II // RARITY // 1/2 drop

Composite LVT

STYLE	V5041	V5042
THICKNESS	3mm	5mm
WEAR LAYER	20 mil	20 mil
NOMINAL DIMENSIONS (INCHES)	18" x 36" [45.72 cm x 91.44 cm]	18" x 36" [45.72 cm x 91.44 cm]
PATTERN	random	random
BACKING CLASS	commercial grade	commercial grade
COMMERCIAL TRAFFIC	heavy commercial	heavy commercial



COLOR 1115
suitable



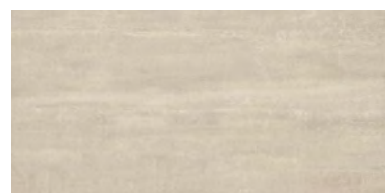
COLOR 1116
natural



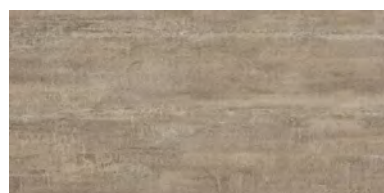
COMPOSITE // SUITABLE // monolithic

Legend LVT

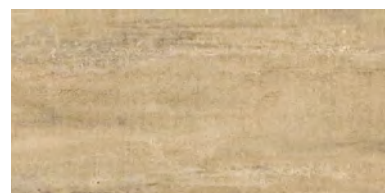
STYLE	V5009	V5010
THICKNESS	3mm	5mm
WEAR LAYER	20 mil	20 mil
NOMINAL DIMENSIONS (INCHES)	18" x 36" (45.72 cm x 91.44 cm)	18" x 36" (45.72 cm x 91.44 cm)
PATTERN	random	random
BACKING CLASS	commercial grade	commercial grade
COMMERCIAL TRAFFIC	heavy commercial	heavy commercial



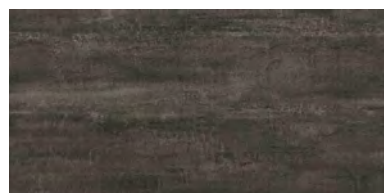
COLOR 1055
saga



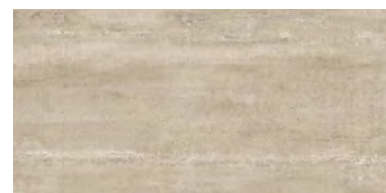
COLOR 1057
tale



COLOR 1056
epic



COLOR 1058
fable



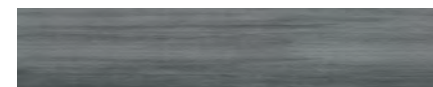
COLOR 1059
fiction



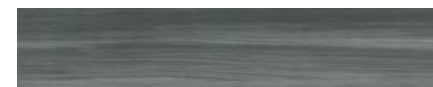
LEGEND // TALE // ashlar

Make Your Mark LVT

STYLE	V5013	V5012
THICKNESS	3mm	5mm
WEAR LAYER	20 mil	20 mil
NOMINAL DIMENSIONS (INCHES)	9" x 48" (22.86 cm x 121.92 cm)	9" x 48" (22.86 cm x 121.92 cm)
PATTERN	random	random
BACKING CLASS	commercial grade	commercial grade
COMMERCIAL TRAFFIC	heavy commercial	heavy commercial



COLOR 1063
shadow



COLOR 1064
smoke



COLOR 1065
charcoal



COLOR 1066
sapphire



COLOR 1067
cobalt



COLOR 1068
denim



COLOR 1069
lime



COLOR 1070
fern



COLOR 1071
iris



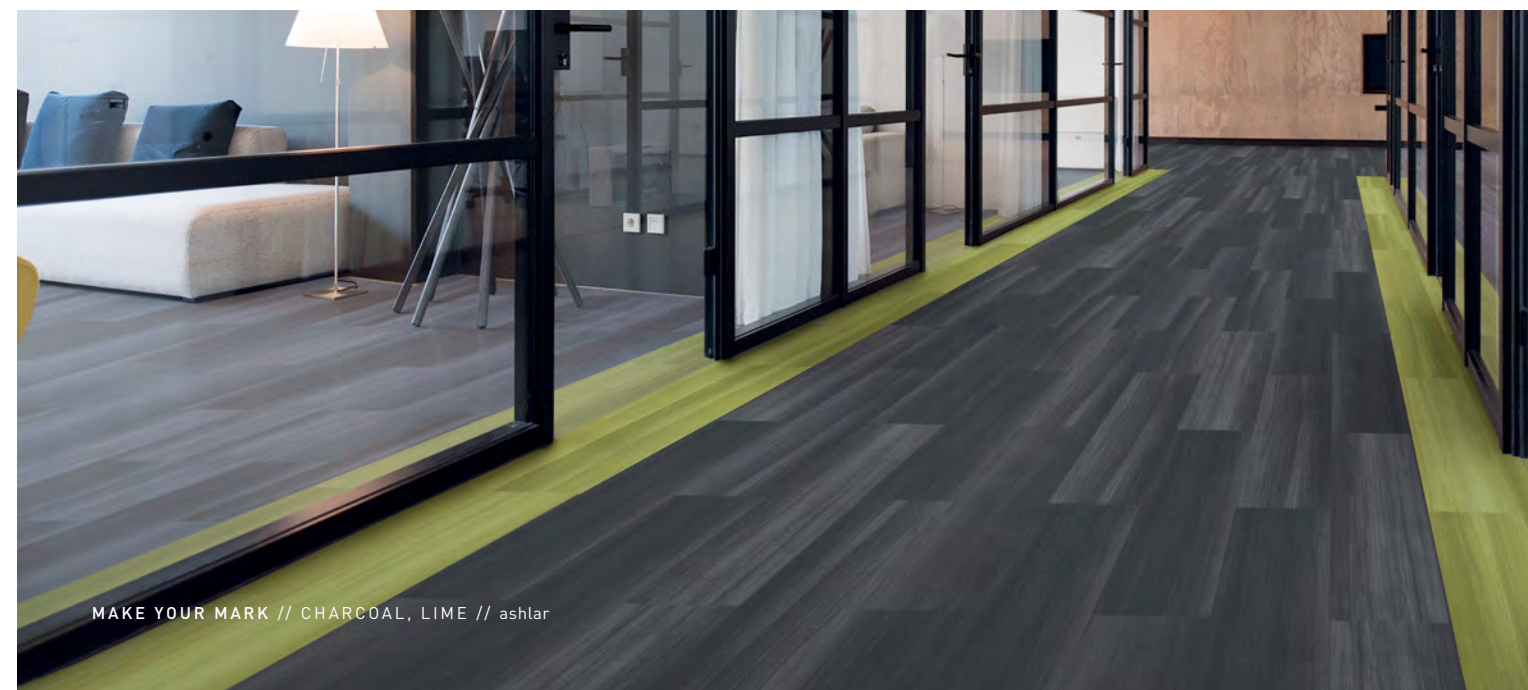
COLOR 1072
marigold



COLOR 1073
tangerine



COLOR 1074
candy



MAKE YOUR MARK // CHARCOAL, LIME // ashlar

Marble LVT

STYLE	V5033	V5034
THICKNESS	3mm	5mm
WEAR LAYER	20 mil	20 mil
NOMINAL DIMENSIONS (INCHES)	18" x 36" (45.72 cm x 91.44 cm)	18" x 36" (45.72 cm x 91.44 cm)
PATTERN	random	random
BACKING CLASS	commercial grade	commercial grade
COMMERCIAL TRAFFIC	heavy commercial	heavy commercial



COLOR 1120
agate



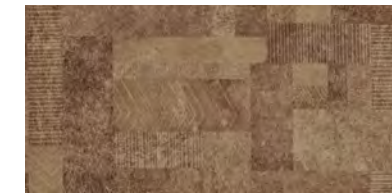
MARBLE // AGATE // ashlar

Parquet LVT

STYLE	V5039	V5040
THICKNESS	3mm	5mm
WEAR LAYER	20 mil	20 mil
NOMINAL DIMENSIONS (INCHES)	18" x 36" (45.72 cm x 91.44 cm)	18" x 36" (45.72 cm x 91.44 cm)
PATTERN	random	random
BACKING CLASS	commercial grade	commercial grade
COMMERCIAL TRAFFIC	heavy commercial	heavy commercial



COLOR 1113
structural



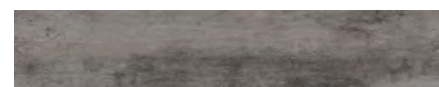
COLOR 1114
wood-block



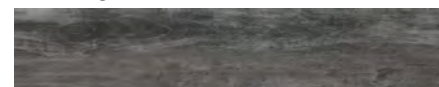
PARQUET // WOOD-BLOCK // monolithic

Power Play LVT

STYLE	V5019	V5020
THICKNESS	3mm	5mm
WEAR LAYER	20 mil	20 mil
NOMINAL DIMENSIONS (INCHES)	9" x 48" (22.86 cm x 121.92 cm)	9" x 48" (22.86 cm x 121.92 cm)
PATTERN	random	random
BACKING CLASS	commercial grade	commercial grade
COMMERCIAL TRAFFIC	heavy commercial	heavy commercial



COLOR 1080
knowledge



COLOR 1081
advantage



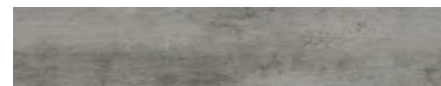
COLOR 1082
situation



COLOR 1083
information



COLOR 1085
dominance



COLOR 1086
influence



COLOR 1084
leverage



POWER PLAY // KNOWLEDGE // herringbone

Segment LVT

STYLE	V5031	V5032
THICKNESS	3mm	5mm
WEAR LAYER	20 mil	20 mil
NOMINAL DIMENSIONS (INCHES)	18" x 36" (45.72 cm x 91.44 cm)	18" x 36" (45.72 cm x 91.44 cm)
PATTERN	random	random
BACKING CLASS	commercial grade	commercial grade
COMMERCIAL TRAFFIC	heavy commercial	heavy commercial



COLOR 1117
fragments



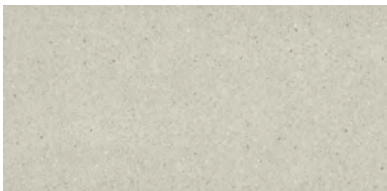
COLOR 1118
mosaic



SEGMENT // MOSAIC // monolithic

Terrazzo LVT

STYLE	V5035	V5036
THICKNESS	3mm	5mm
WEAR LAYER	20 mil	20 mil
NOMINAL DIMENSIONS (INCHES)	18" x 36" (45.72 cm x 91.44 cm)	18" x 36" (45.72 cm x 91.44 cm)
PATTERN	random	random
BACKING CLASS	commercial grade	commercial grade
COMMERCIAL TRAFFIC	heavy commercial	heavy commercial



COLOR 1119
pebble



TERRAZZO // PEBBLE // monolithic

The Blend



STYLE	V5051
TYPE	Direct Digital Print & Emboss SPC
THICKNESS	5mm
AC RATING	AC3 (Equivalent to 20 mil wear layer)
NOMINAL DIMENSIONS (INCHES)	7" x 48" (17.78 cm x 121.92 cm)
PATTERN REPEAT	35 unique planks
LOCKING MECHANISM	One2Click® Angle/Angle
COMMERCIAL TRAFFIC	commercial



COLOR 1151
inspire



COLOR 1152
transition



COLOR 1153
community



THE BLEND // INSPIRE // ashlar

Framework LVT

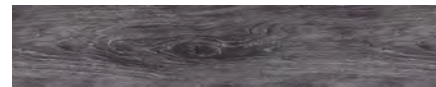
STYLE	V5001
THICKNESS	5 mm
WEAR LAYER	20 mil
NOMINAL DIMENSIONS	9" x 48" [22.86 cm x 121.92 cm]
PATTERN	random wood pattern
BACKING CLASS	commercial grade
COMMERCIAL TRAFFIC	heavy commercial



COLOR 1010
pier



COLOR 1012
anchor



COLOR 1014
partition



COLOR 1011
header



COLOR 1013
brace



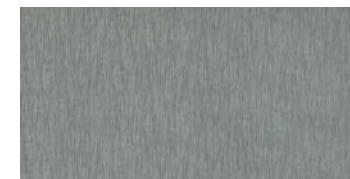
COLOR 1015
beam



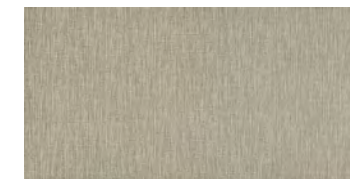
FRAMEWORK // PIER // herringbone

Tatami LVT

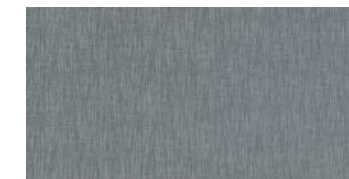
STYLE	V5003
THICKNESS	5 mm
WEAR LAYER	20 mil
NOMINAL DIMENSIONS	18" x 36" [45.72 cm x 91.44 cm]
PATTERN	random textile pattern
BACKING CLASS	commercial grade
COMMERCIAL TRAFFIC	heavy commercial



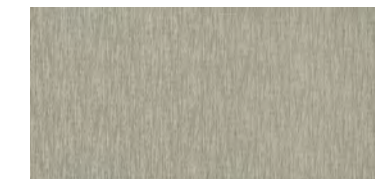
COLOR 1019
edo



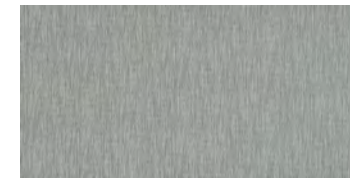
COLOR 1017
nara



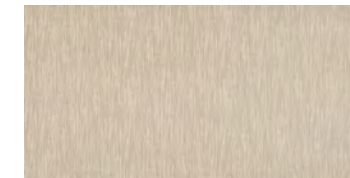
COLOR 1023
zen



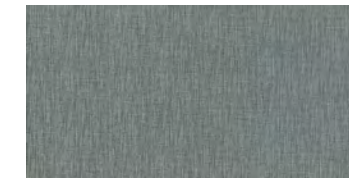
COLOR 1021
goza



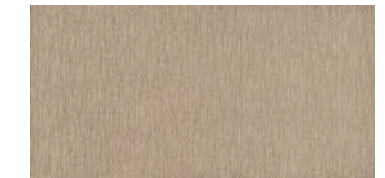
COLOR 1018
kyoto



COLOR 1016
straw



COLOR 1022
wabi



COLOR 1020
rush



TATAMI // ZEN // parquet

Timeless LVT

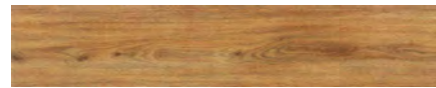
STYLE	V5011
THICKNESS	5 mm
WEAR LAYER	20 mil
NOMINAL DIMENSIONS	9" x 48" [22.86 cm x 121.92 cm]
PATTERN	random wood pattern
BACKING CLASS	commercial grade
COMMERCIAL TRAFFIC	heavy commercial



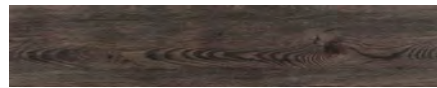
COLOR 1000
notable



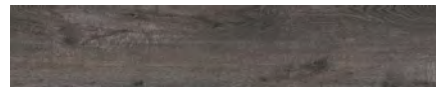
COLOR 1008
paradigm



COLOR 1003
heirloom



COLOR 1009
heritage



COLOR 1061
gift



COLOR 1007
curio



COLOR 1060
inheritance



COLOR 1062
estate



TIMELESS // PARADIGM // ashtar
[back cover] LEGEND // FICTION // 1/3 drop // FAIRWAY II // PEBBLE BEACH // monolithic

SUSTAINABLY SOUND

J+J Flooring believes true sustainability requires full attention to the potential impacts of every aspect of our business. In accordance with our mission of waste reduction, J+J LVT products are 100% recyclable. You can rest assured that health is also a top priority and all J+J Flooring LVT products are FloorScore Certified.



MOISTURE

Are high levels of moisture in your concrete slab causing issues with your project's floor covering? We can help.

- » Cost-efficient
- » Long-term performance
- » Requires no special floor preparation

Installed without Commercialon® Premium Sealer	90% RH, pH 9
Installed with Commercialon® Premium Sealer	99% RH, pH 11 (TileTabs, 5mm) 97% RH, pH 11 Commercialon Adhesive (2.5mm, 3mm)
Installed with Commercialon® High Moisture Adhesive	99% RH, pH12

ZPT ANTI-MICROBIAL TREATMENT

J+J Flooring LVT features a standard enhancement of ZPT (Zinc Protective Technology) anti-microbial. Dispersed into the product during the manufacturing process, ZPT anti-microbial prevents unpleasant odors, degradation and discoloration as a result of microbial contamination. ZPT contains Zinc Pyrithione as the main ingredient with no harmful additives. Zinc Pyrithione is a common dandruff shampoo ingredient and proven to be safe in both household and commercial use. ZPT anti-microbial technology guarantees your J+J Flooring LVT will provide a beautiful, long lasting and safe floor covering for years to come.

COMMERCIALON® PREMIUM MODULAR ADHESIVE

A high strength acrylic latex-based adhesive specifically formulated for bonding modular PVC backed carpet and LVT to the floor. This premium adhesive is for use with all Nexus Modular Tile and J+J Flooring LVT products. This adhesive is guaranteed for the life of the installation when used in accordance with the J+J Flooring Carpet and LVT installation instructions. Commercialon Premium Modular Adhesive meets the CRI Low-VOC Emission Criteria, CRI ID# PSA-425402. Commercialon Premium Modular Adhesive is non toxic, has ultra-low odor and is antimicrobial in the dry state.

OPTIONAL:

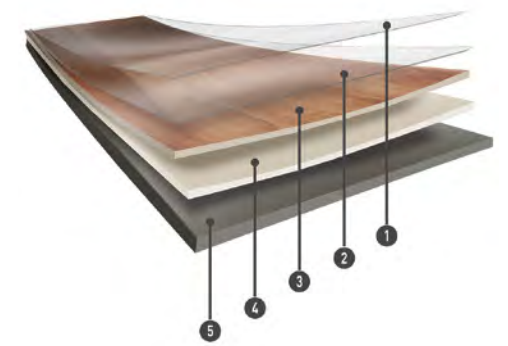
Commercialon® High Moisture Adhesive

TileTabs - High Tack Adhesive Tabs (5mm only)

WARRANTIES

We stand behind every aspect of our LVT. Each warranty is covered for 10 years, provided that installation and maintenance is in accordance with J+J Flooring's LVT Installation instructions.

Installed with Commercialon® Premium Adhesive (non-prorated)	Installed with TileTabs	Installed with any other adhesive
10 years	10 years (5mm only)	1 Year



- 1 Protective UV Cured Urethane with Ceramic Bead
- 2 Wear Layer
- 3 High Definition Print Film
- 4 Impact Resistant Core Layer
- 5 Foundational Base Layer



COORDINATES

Beyond the beauty of individual products, our flooring coordinates effortlessly across all of our product platforms - modular carpet tile, broadloom, LVT and Kinetex textile composite flooring. This offering enables you to blend a range of designs with tonal simplicity to create palettes that reflect the demands of each unique space.

1. **COSMOS** // 7720 // 3526 Virgo // modular

2. **INTRINSIC** // 7096 // 2719 Essential // modular

3. **SUMMIT II** // N9086 // 9925 Plateau // broadloom

4. **TABBY** // 7802 // 3628 Truffle // modular

5. **LIMELIGHT** // N9132 + 7316 // 3325 Aria // broadloom + modular

6. **REED** // 7800 // 3628 Truffle // modular

7. **LIMELIGHT** // N9132 + 7316 // 3329 Stage // broadloom + modular

8. **PINNACLE II** // N9092 // 9925 Talus // broadloom

9. **SIGNATURE II** // V5028 // 1060 Inheritance // LVT

10. **GALAXY** // 7719 // 3526 Virgo // modular

11. **QUILL** // 7801 // 3628 Truffle // modular

12. **URBAN AVE** // 1843 // 2971 Community // kinetex



COORDINATES

Beyond the beauty of individual products, our flooring coordinates effortlessly across all of our product platforms - modular carpet tile, broadloom, LVT and Kinetex textile composite flooring. This offering enables you to blend a range of designs with tonal simplicity to create palettes that reflect the demands of each unique space.

1. **FUNCTION** // 7410 // 1800 Camber // modular

2. **LEGEND** // V5009 + V5010 // 1056 Epic // LVT

3. **FAIRWAY II** // N9117 + N117 // 9970 Pinehurst // broadloom + modular

4. **SUMMIT II** // N9086 // 9785 Limestone // broadloom

5. **ETCHED** // 7030 // 1983 Impression // modular

6. **TWILL WEAVE** // 7586 // 2874 Mills // modular

7. **LINKS II** // N9115 // 9770 Pinehurst // broadloom

8. **FRAMEWORK** // V5001 // 1015 Beam // LVT

9. **VERIFY** // 6097 // 3563 Essential Accent // broadloom

10. **STRUCTURE** // 20100 // 1800 Camber // broadloom

11. **REVEAL** // 7685 // 2635 Raw // modular

12. **FRACTURED PLAID** // 7587 // 2874 Mills // modular



P.O. BOX 2207
DALTON, GA 30722
P 800 241 4586
F 706 275 4433
JJFLOORING.COM
AX0624M04

carpet | lvt | kinetex